

CERTIFICATE OF LOCATION OF GOVERNMENT CORNER

County of Anoka

State of Minnesota

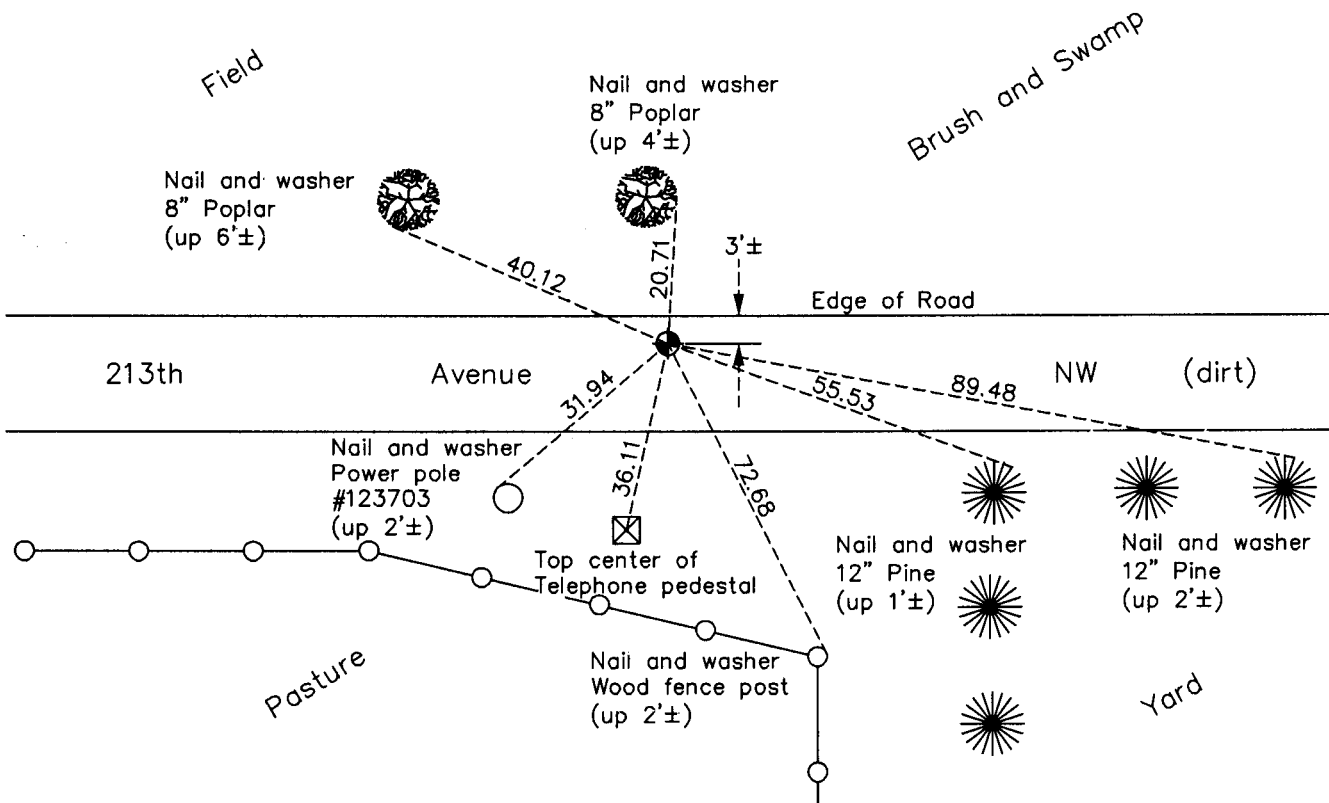
South $\frac{1}{4}$ Corner of Sec. 10 Township 33 Range 25

On the 18th day of November, 1974, the described corner was evidenced by area resurvey

and to perpetuate the location of said corner, at the exact location thereof, a permanent marker was placed consisting of a cast iron monument

AND on the 21st day of October, 2013, said permanent marker was found down 0.7'± and the ties were updated

Updated reference ties are as shown below.



N
W ANOKA COUNTY SURVEYOR E
S

Revision Date
1/13/14

N.A.D. 1983 Coordinates
(1996 Adjustment)

County Project Coordinates	
Northing	217246.4063
Easting	455523.1739
Date	9/25/02

I hereby certify that this United States public land survey monument record is correct and complete to the best of my knowledge and belief.

Larry D. Hoium Date 1/13/14

Larry D. Hoium, Anoka County Surveyor
Minnesota License Number 18165