

CERTIFICATE OF LOCATION OF GOVERNMENT CORNER

County of Anoka

State of Minnesota

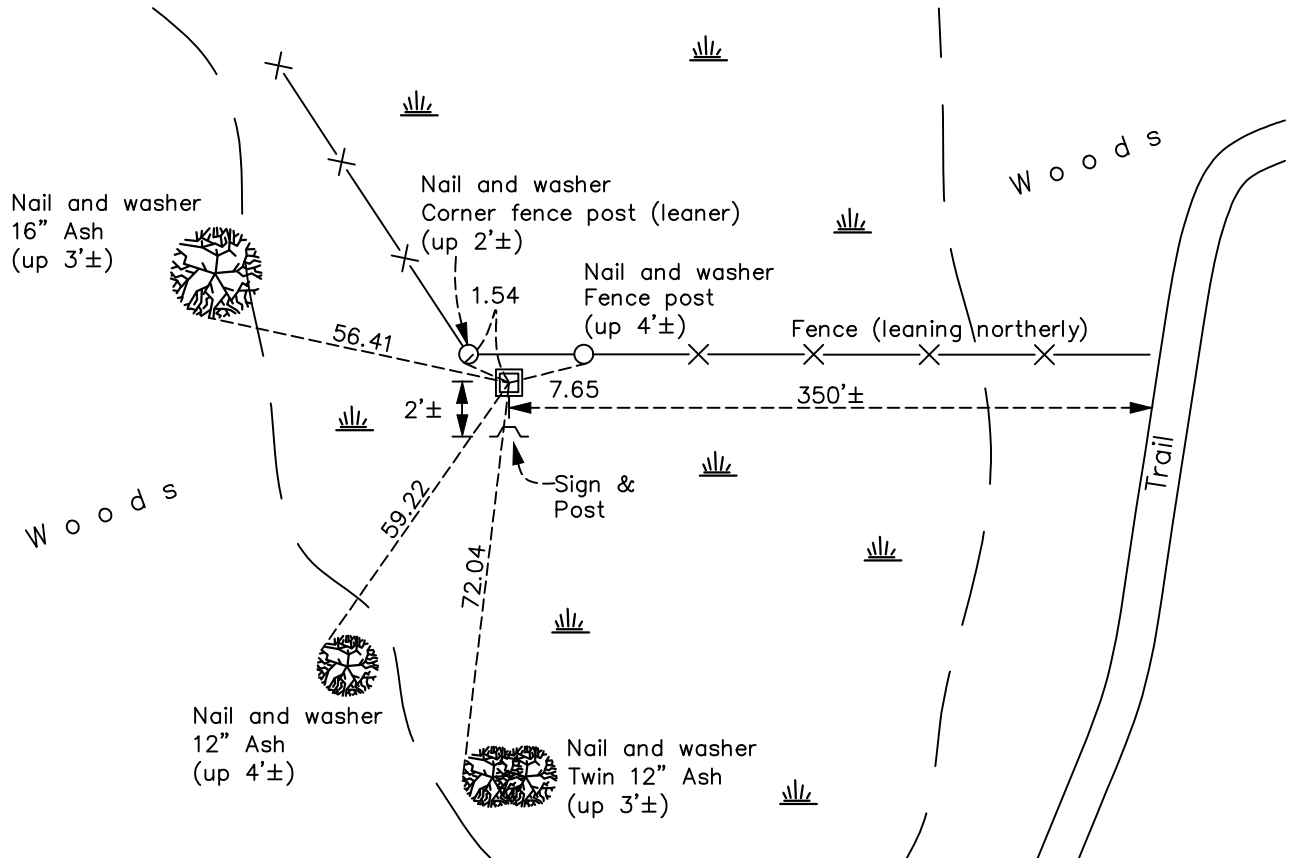
Northeast Corner of Sec. 16 Township 33 Range 25

On the 7th day of February, 2024, the described corner was evidenced by a 4"x4" concrete monument

and to perpetuate the location of said corner, at the exact location thereof, a permanent marker was placed consisting of a 2"x 2"x 6' Telspar w/ aluminum cap and punch mark set up 1.0'± in same location replacing found concrete monument, which was removed.

AND on the 7th day of February, 2024, said permanent marker was measured with RTK GPS method to verify newly set location and ties were updated.

Updated reference ties are as shown below.



Revision Date
3/27/2024

N.A.D. 1983 Coordinates
 (1996 Adjustment)

County Project Coordinates	
Northing	<u>217259.0271</u>
Easting	<u>452859.5664</u>
Date	<u>12/10/02</u>

I hereby certify that this United States public land survey monument record is correct and complete to the best of my knowledge and belief.

David Zieglmeier Date 3/28/24

David M. Zieglmeier, Anoka County Surveyor
 Minnesota License Number 46179

HISTORY OF GOVERNMENT CORNER

Page No. 45

County of Anoka

State of Minnesota

Northeast Corner of Sec. 16 Township 33 Range 25

CORNER HISTORY:

August 18, 1945 - Harvey Cartwright set a concrete monument using a found fence corner from north and east fence line which was placed by original survey stake (testimony Mr. Thompson). Established ties to monument.

10/3/1963, 8/10/1973, 7/21/1976, 7/1/19**, 6/23/1989, 7/12/1994 - Found 4" x 4" concrete monument and updated ties.

December 10, 2002 - Found 4" x 4" concrete monument and updated ties. Established NAD 1983 (1996 adj.) Anoka County project coordinates by static GPS methods.

October 22, 2013 - Found 4" x 4" concrete monument leaning easterly 0.2'± and updated ties.

March 30, 2018 - Found 4" x 4" concrete monument leaning easterly 0.2'± and under water 0.3'±. Updated ties.

July 19, 2021 - Found 4" x 4" concrete monument leaning easterly 0.2'±. Updated ties. Verified position of corner by VRS GPS method.

February 7, 2024 - Found 4" x 4" concrete monument leaning easterly 0.2'±; removed. Replaced with 2"x 2" x 6' Telspar with 'county surveyor' cap and punch mark, set up 1.0'±. Set to published coordinates using RTK GPS method and historical ties. Updated ties after setting. Added sign & post to south side facing south. Job #24-100