

CERTIFICATE OF LOCATION OF GOVERNMENT CORNER

County of Anoka

State of Minnesota

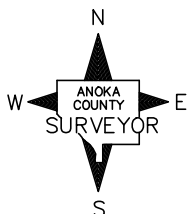
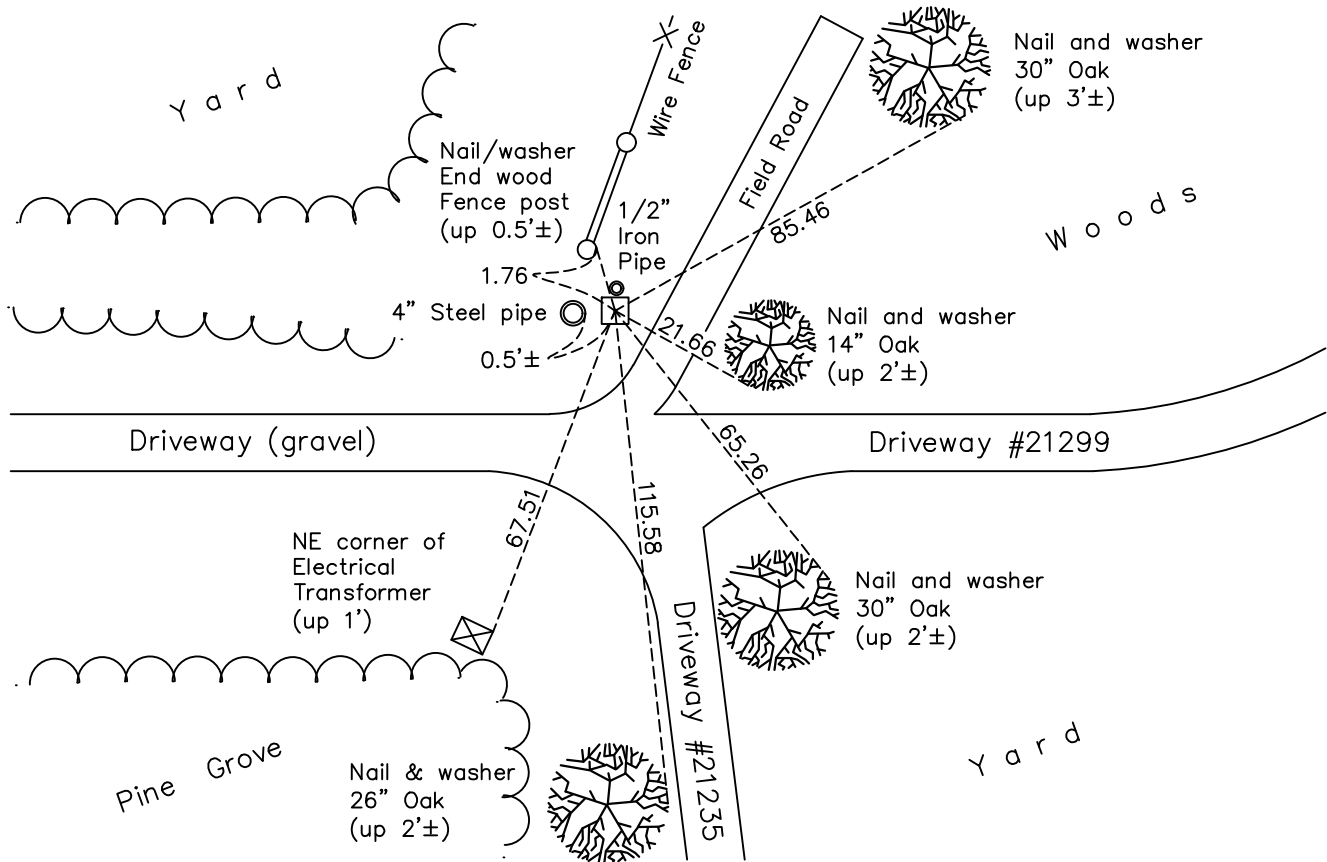
North $\frac{1}{4}$ Corner of Sec. 16 Township 33 Range 25

On the 3rd day of October, 1963, the described corner was evidenced by a concrete monument

and to perpetuate the location of said corner, at the exact location thereof, a permanent marker was placed consisting of the same concrete monument with a 4" steel pipe on the west side

AND on the 22nd day of February, 2018, said permanent marker was found down 1'± with a 1/2" iron pipe on the north side and the ties were updated

Updated reference ties are as shown below.



Revision Date

4/16/18

N.A.D. 1983 Coordinates
(1996 Adjustment)

County Project Coordinates	
Northing	217269.9689
Easting	450187.6769
Date	9/26/02

I hereby certify that this United States public land survey monument record is correct and complete to the best of my knowledge and belief.

David M Zieglsmeier Date 6/9/21

David M. Zieglsmeier, Anoka County Surveyor

Minnesota License Number 46179

HISTORY OF GOVERNMENT CORNER

Page No. 46

County of Anoka

State of Minnesota

North 1/4 Corner of Sec. 16 Township 33 Range 25

CORNER HISTORY:

May 1855 - This corner was established by James M. Marsh, Deputy Surveyor. Marsh marked the position by "set quarter section post" with two bearing trees marked as accessories.

August 21, 1945 - Harvey Cartwright set a concrete monument using an old BT broken off and remains of old stake. Established ties to concrete monument.

April 17, 1956 - Anoka County highway department found concrete monument down 1.5'± and updated ties.

October 3, 1963 - Found concrete monument down 15"± and set 1/2" iron pipe on the north side. Updated ties.

August 23, 1965 - Found concrete monument and updated ties.

July 16, 1969 - Found concrete monument and updated ties.

August 7, 1973 - Found concrete monument and updated ties.

July 22, 1976 - Found concrete monument and updated ties.

July 19, 1979 - Found concrete monument and updated ties.

August 4, 1982 - Found concrete monument and updated ties.

July 8, 1985 - Found concrete monument and updated ties.

June 23, 1989 - Found concrete monument with 4" steel pipe 0.5'± west of monument. Updated ties.

July 11, 1994 - Found concrete monument and updated ties.

September 26, 2002 - Established NAD 1983 (1996 adj.) Anoka County project coordinates by static GPS methods.

October 22, 2013 - Found concrete monument down 1'± with 1/2" iron pipe on the north side. Updated ties.

February 22, 2018 - Found concrete monument down 1'± with 1/2" iron pipe on the north side. Verified position by VRS GPS methods. Updated ties.