

CERTIFICATE OF LOCATION OF GOVERNMENT CORNER

County of Anoka

State of Minnesota

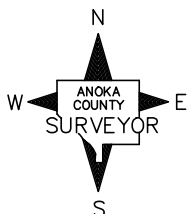
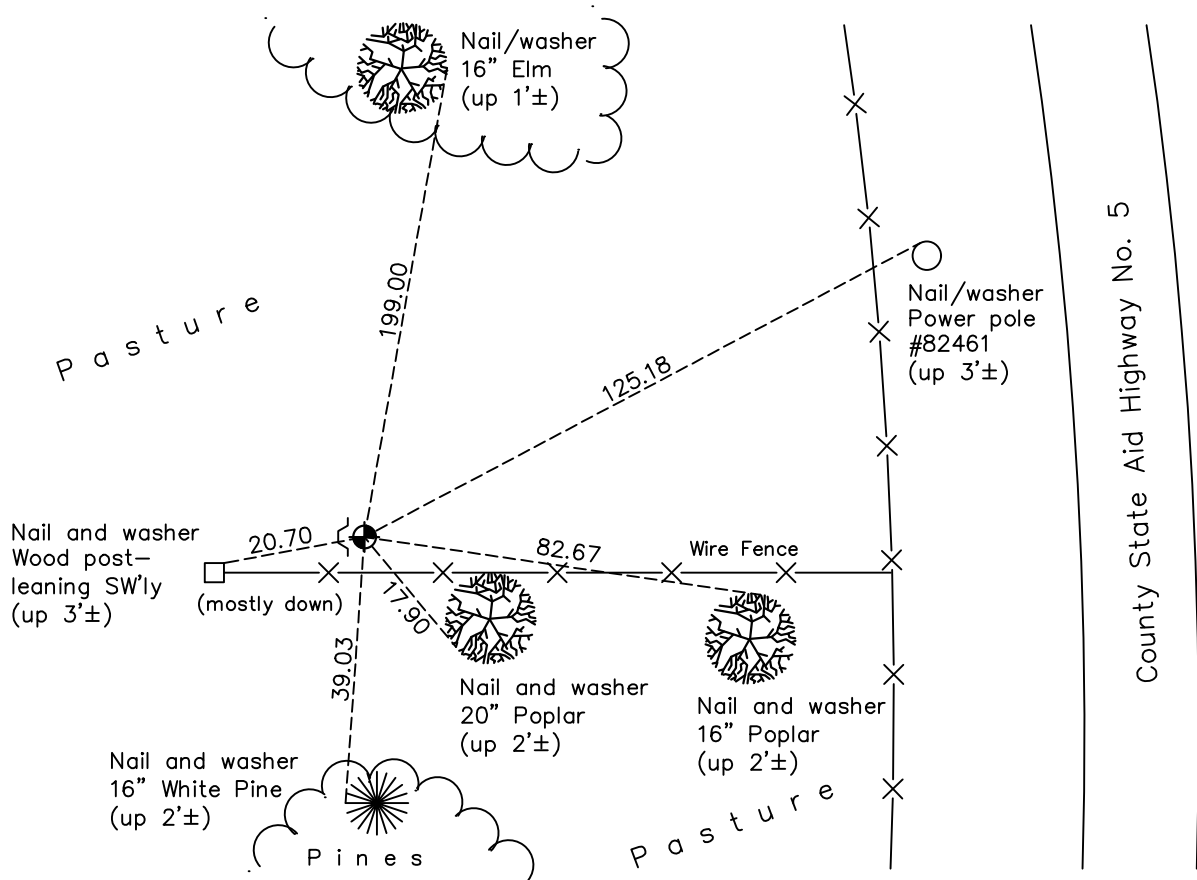
Northeast Corner of Sec. 17 Township 33 Range 25

On the 7th day of November, 1974, the described corner was evidenced by area resurvey

and to perpetuate the location of said corner, at the exact location thereof, a permanent marker was placed consisting of a cast iron monument with a sign and post on the west side leaning southerly

AND on the 23rd day of March, 2018, said permanent marker was found up 0.3'± leaning southwesterly and the ties were updated

Updated reference ties are as shown below.



Revision Date

4/16/18

N.A.D. 1983 Coordinates
(1996 Adjustment)

County Project Coordinates	
Northing	<u>217320.5273</u>
Easting	<u>447551.5680</u>
Date	<u>9/23/02</u>

I hereby certify that this United States public land survey monument record is correct and complete to the best of my knowledge and belief.

David M Ziegmeier Date 6/9/21

David M. Ziegmeier, Anoka County Surveyor

Minnesota License Number 46179

HISTORY OF GOVERNMENT CORNER

Page No. 47

County of Anoka

State of Minnesota

Northeast Corner of Sec. 17 Township 33 Range 25

CORNER HISTORY:

May 1855 - This corner was established by James M. Marsh, Deputy Surveyor. Marsh marked the position by "set post corner of sections 8, 9, 16 and 17" with two bearing trees marked as accessories.

November 7, 1974 - Set cast iron monument flush and 2'± south of fence using area resurvey. Established ties to monument. Set sign and post on the north side.

July 22, 1976 - Found cast iron monument and updated ties.

April 13, 1977 - Removed previously set monument. Reset cast iron monument flush in new location 0.5'± north of fence. Set sign and post on the west side. Updated ties.

July 19, 1979 - Found cast iron monument and updated ties.

August 4, 1982 - Found cast iron monument and updated ties.

August 25, 1988 - Found cast iron monument and updated ties.

June 27, 1994 - Found cast iron monument and updated ties.

September 23, 2002 - Established NAD 1983 (1996 adj.) Anoka County project coordinates by static GPS methods.

September 24, 2002 - Found cast iron monument and updated ties.

March 20, 2013 - Found cast iron monument leaning southwesterly w/sign and post on the west side. Verified position by VRS GPS methods. Updated ties.

March 23, 2018 - Found cast iron monument up 0.3'± and leaning southwesterly w/sign and post. Verified position by VRS GPS methods. Updated ties.