

CERTIFICATE OF LOCATION OF GOVERNMENT CORNER

County of Anoka

State of Minnesota

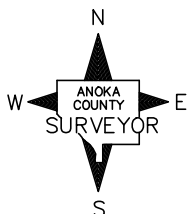
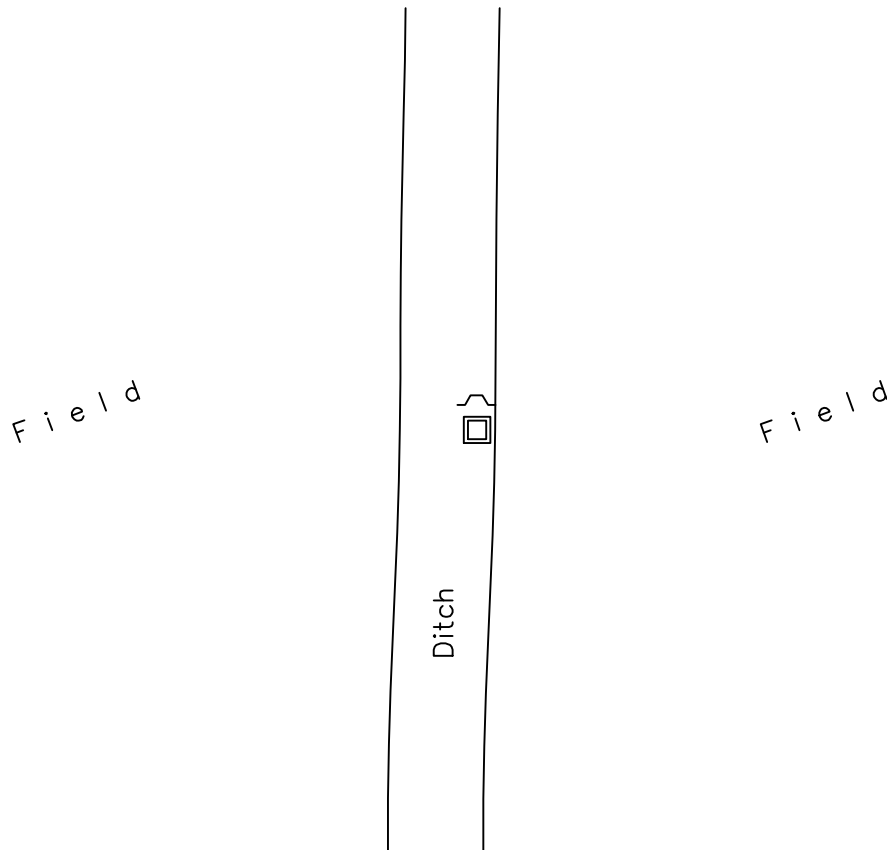
North 1/4 Corner of Sec. 18 Township 33 Range 25

On the 4th day of September, 1975, the described corner was evidenced by area resurvey

and to perpetuate the location of said corner, at the exact location thereof, a permanent marker was placed consisting of a cast iron monument

AND on the 19th day of May, 2021, said permanent marker was found 2"x2" steel Telspar monument w/punchmarked cap. Sign & post on north side. Checked position by static GPS methods.

Updated reference ties are as shown below.



Revision Date

6/1/21

N.A.D. 1983 Coordinates
(1996 Adjustment)

County Project Coordinates	
Northing	<u>217426.3110</u>
Easting	<u>439672.9298</u>
Date	<u>2/11/03</u>

I hereby certify that this United States public land survey monument record is correct and complete to the best of my knowledge and belief.

David M. Zieglmeier Date 6/9/21

David M. Zieglmeier, Anoka County Surveyor

Minnesota License Number 46179

HISTORY OF GOVERNMENT CORNER

Page No. 50

County of Anoka

State of Minnesota

North 1/4 Corner of Sec. 18 Township 33 Range 25

CORNER HISTORY:

May 1855 - This corner was established by James M. Marsh, Deputy Surveyor. Marsh marked the position by "set quarter section post" with one bearing tree marked as an accessory.

September 4, 1975 - Set cast iron monument flush using area resurvey. Established ties to monument. Set sign and post on south side.

July 22, 1976 - Found cast iron monument and updated ties.

July 19, 1979 - Found cast iron monument and updated ties.

August 4, 1982 - Found cast iron monument and updated ties.

July 8, 1985 - Found cast iron monument and updated ties.

June 13, 1989 - Found cast iron monument and updated ties.

July 13, 1994 - Found cast iron monument and updated ties.

February 11, 2003 - Found cast iron monument missing due to ditch construction. Set temporary spike and verified position by static GPS methods.

February 18, 2003 - Found temporary spike and replaced with 2" x 2" steel Telspar monument w/punchmarked cap. Set sign and post on north side.

May 19, 2021 - Found 2" x 2" steel Telspar monument w/punchmarked cap and verified position by static GPS methods. Corner ties unavailable.