

CERTIFICATE OF LOCATION OF GOVERNMENT CORNER

County of Anoka

State of Minnesota

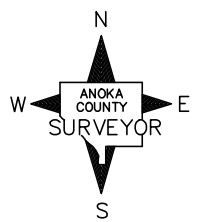
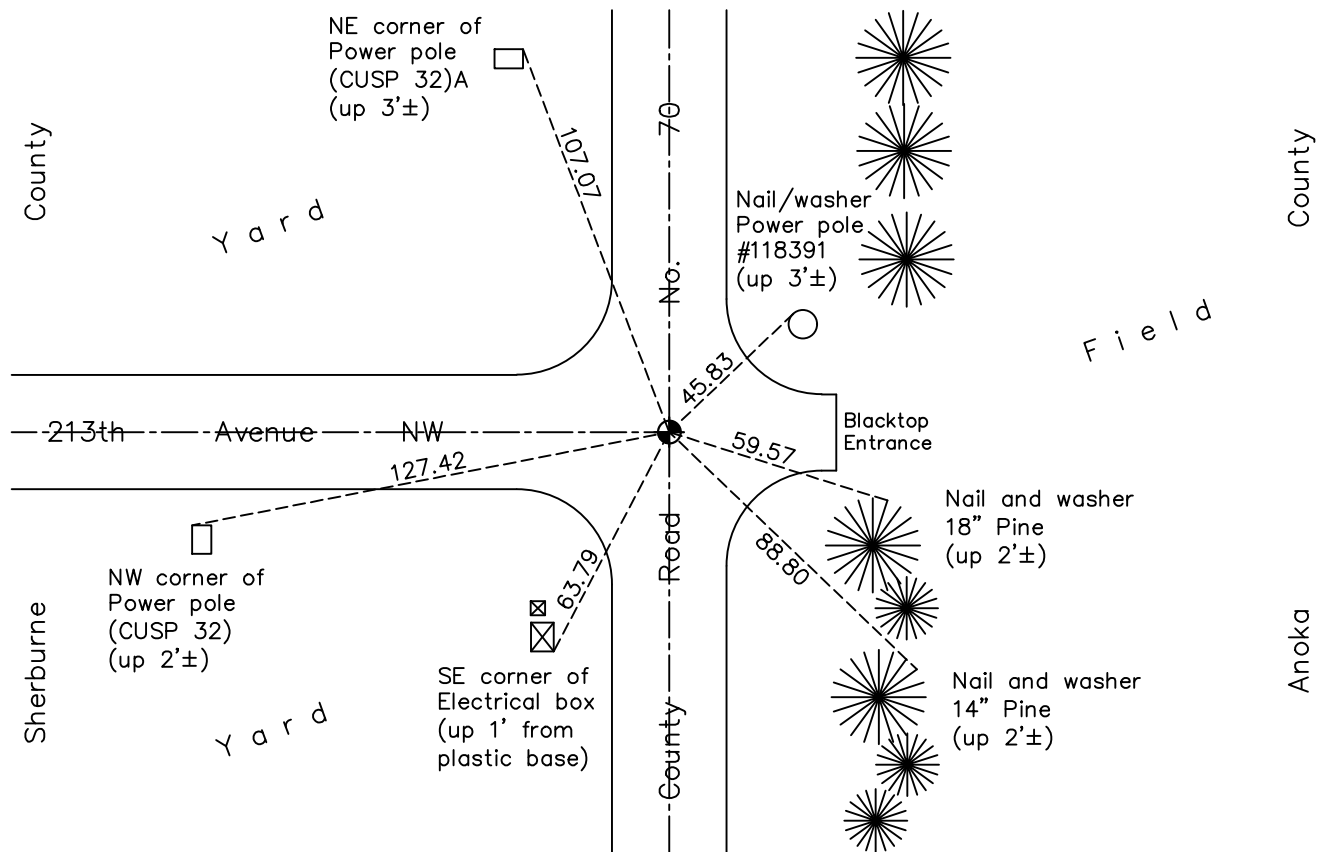
Southwest Corner of Sec. 7 Township 33 Range 25

On the 15th day of January, 1964, the described corner was evidenced by a cast iron monument located using Sherburne County ties

and to perpetuate the location of said corner, at the exact location thereof, a permanent marker was placed consisting of a cast iron monument on centerline/centerline

AND on the 6th day of March, 2018, said permanent marker was found flush and the ties were updated

Updated reference ties are as shown below.



N.A.D. 1983 Coordinates
(1996 Adjustment)

County Project Coordinates	
Northing	<u>217444.1265</u>
Easting	<u>437398.2391</u>
Date	<u>9/26/02</u>

Revision Date
4/17/18

I hereby certify that this United States public land survey monument record is correct and complete to the best of my knowledge and belief.

David M Zieglmeier Date 6/9/21

David M. Zieglmeier, Anoka County Surveyor
Minnesota License Number 46179

HISTORY OF GOVERNMENT CORNER

Page No. 51

County of Anoka

State of Minnesota

Southwest Corner of Sec. 7 Township 33 Range 25

CORNER HISTORY:

September 1849 - This corner was established by Theodore Conkey, Deputy Surveyor. Conkey marked the position by "set post corner sections 7, 18, 12 and 13" with four bearing trees marked as accessories.

January 15, 1964 - Found Sherburne County cast iron monument down 0.5'± using Sherburne County Highway Department ties. Updated ties. Set P.K. spikes 2' north and east.

August 9, 1965 - Found cast iron monument and updated ties.

July 8, 1969 - Found cast iron monument and updated ties.

July 14, 1969 - Replaced solid cast iron monument with removable top cast iron monument flush. Updated ties.

July 23, 1973 - Found cast iron monument and updated ties.

July 22, 1976 - Found cast iron monument and updated ties.

July 10, 1979 - Found cast iron monument and updated ties.

July 30, 1982 - Found cast iron monument and updated ties.

July 8, 1985 - Found cast iron monument and updated ties.

August 24, 1988 - Replaced cast iron monument and updated ties.

July 29, 1994 - Found cast iron monument and updated ties.

September 26, 2002 - Established NAD 1983 (1996 adj.) Anoka County project coordinates by static GPS methods.

March 29, 2013 - Found cast iron monument on centerline/centerline. Verified position by VRS GPS methods. Updated ties.

March 6, 2018 - Found cast iron monument flush. Verified position by VRS GPS methods. Updated ties.