

# CERTIFICATE OF LOCATION OF GOVERNMENT CORNER

County of Anoka

State of Minnesota

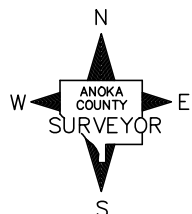
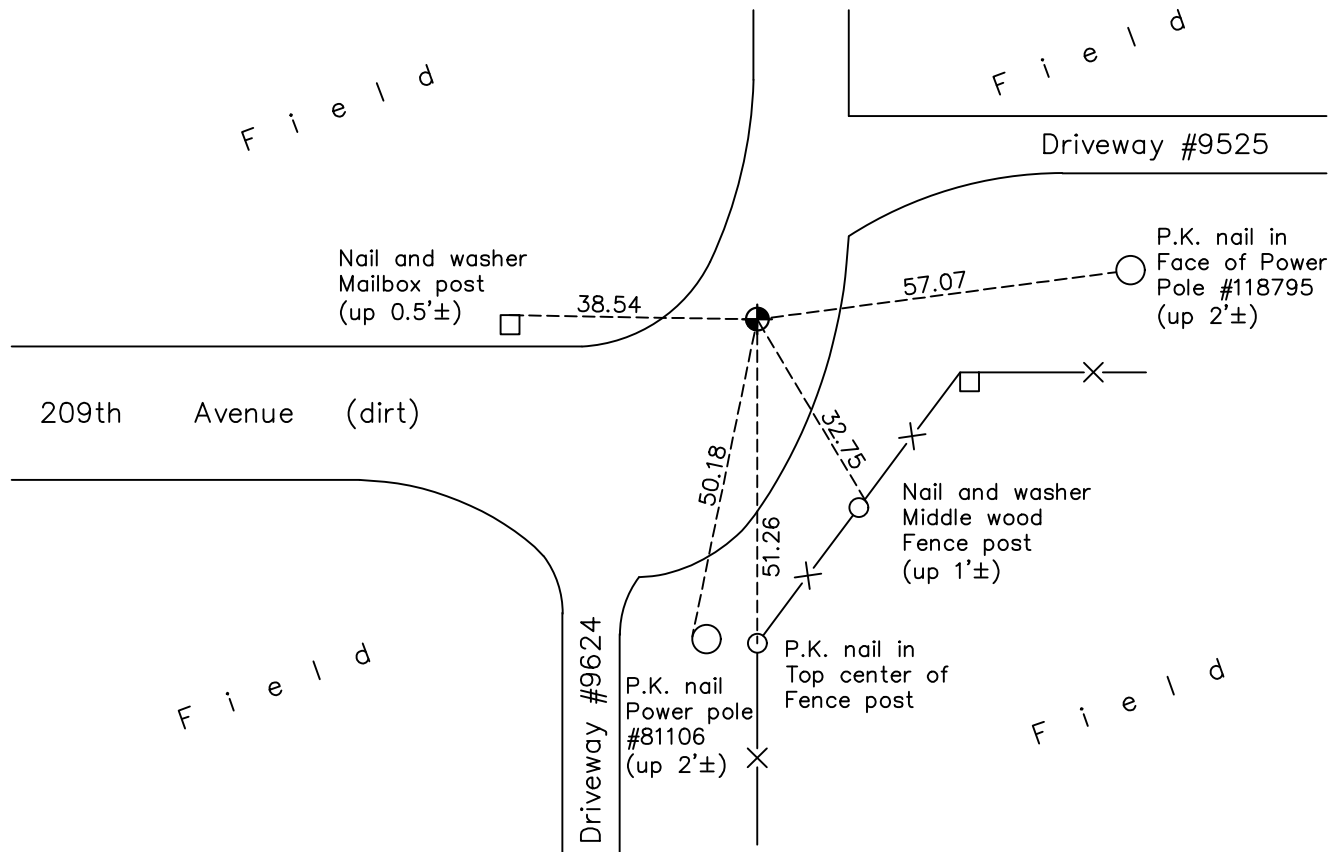
## West 1/4 Corner of Sec. 18 Township 33 Range 25

On the 7th day of July, 1961, the described corner was evidenced by a square top stone (by Sherburne County Surveyors)

and to perpetuate the location of said corner, at the exact location thereof, a permanent marker was placed consisting of a Sherburne County cast iron monument

AND on the 12th day of April, 2018, said permanent marker was found flush and the ties were updated

Updated reference ties are as shown below.



Revision Date

4/17/18

N.A.D. 1983 Coordinates  
(1996 Adjustment)

County Project Coordinates	
Northing	<u>214804.8717</u>
Easting	<u>437381.3272</u>
Date	<u>9/26/02</u>

I hereby certify that this United States public land survey monument record is correct and complete to the best of my knowledge and belief.

*David M Zieglmeier* Date 6/9/21

David M. Zieglmeier, Anoka County Surveyor

Minnesota License Number 46179

# HISTORY OF GOVERNMENT CORNER

Page No. 52

County of Anoka

State of Minnesota

## West 1/4 Corner of Sec. 18 Township 33 Range 25

### **CORNER HISTORY:**

September 1849 - This corner was established by Theodore Conkey, Deputy Surveyor. Conkey marked the position by "set post for quarter section corner" with one bearing tree marked as an accessory.

July 7, 1961 - Found square top stone. Stone said to be corner set by Sherburne County surveyor by farmer in area. Replaced stone with cast iron monument. Updated ties.

August 9, 1965 - Found cast iron monument 5.5'± north of fence extended from east. Updated ties.

July 8, 1969 - Found cast iron monument down 0.4'± and updated ties.

August 6, 1973 - Found cast iron monument and updated ties.

July 22, 1976 - Found cast iron monument and updated ties.

July 10, 1979 - Found cast iron monument and updated ties.

February 22, 1983 - Found cast iron monument and updated ties.

July 8, 1985 - Found cast iron monument and updated ties.

August 23, 1988 - Found cast iron monument and updated ties.

June 29, 1994 - Found cast iron monument and updated ties.

September 26, 2002 - Established NAD 1983 (1996 adj.) Anoka County project coordinates by static GPS methods.

April 12, 2013 - Found Sherburne County cast iron monument. Verified position by VRS GPS methods. Updated ties.

January 12, 2018 - Found Sherburne County cast iron monument flush. Verified position by VRS GPS methods. Updated ties.