

CERTIFICATE OF LOCATION OF GOVERNMENT CORNER

County of Anoka

State of Minnesota

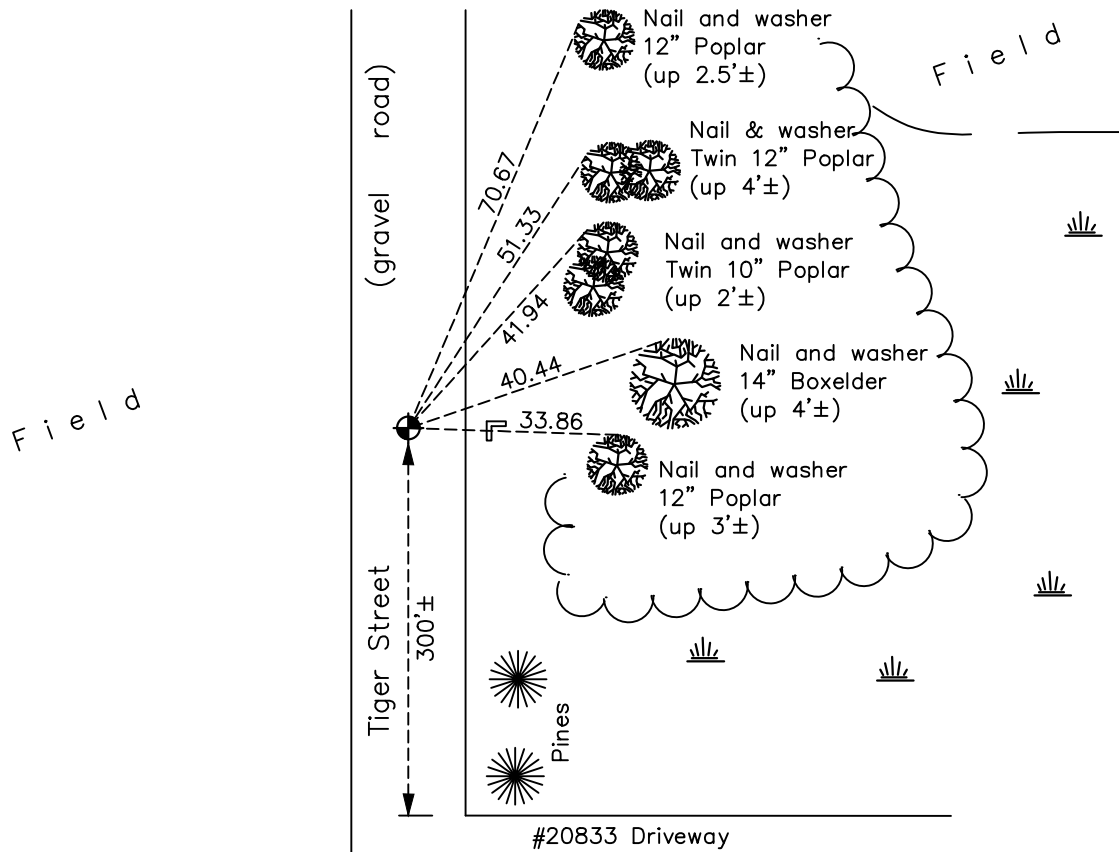
West 1/4 Corner of Sec. 17 Township 33 Range 25

On the 14th day of March, 1974, the described corner was evidenced by an iron pipe

and to perpetuate the location of said corner, at the exact location thereof, a permanent marker was placed consisting of a cast iron monument with a angle iron post

AND on the 23rd day of March, 2018, said permanent marker was found down 0.6'± and the ties were updated

Updated reference ties are as shown below.



Revision Date

4/17/18

N.A.D. 1983 Coordinates
(1996 Adjustment)

County Project Coordinates

Northing 214764.1644

Easting 442318.9717

Date 9/26/02

I hereby certify that this United States public land survey monument record is correct and complete to the best of my knowledge and belief.

David M. Zieglmeier Date 6/9/21

David M. Zieglmeier, Anoka County Surveyor

Minnesota License Number 46179

HISTORY OF GOVERNMENT CORNER

Page No. 53

County of Anoka

State of Minnesota

West 1/4 Corner of Sec. 17 Township 33 Range 25

CORNER HISTORY:

May 1855 - This corner was established by James M. Marsh, Deputy Surveyor. Marsh marked the position by "set quarter section post" with two bearing trees marked as accessories.

March 14, 1974 - Replaced iron pipe set by N.C. Hoium with a cast iron monument down 0.4'±. Updated ties.

July 22, 1976 - Found cast iron monument and updated ties.

July 11, 1979 - Found cast iron monument and updated ties.

August 6, 1982 - Found cast iron monument and updated ties.

August 26, 1988 - Found cast iron monument and updated ties.

July 11, 1994 - Found cast iron monument and updated ties.

April 11, 1996 - Found cast iron monument down 0.4'± w/sign and post on the east side of road. Updated ties.

September 26, 2002 - Established NAD 1983 (1996 adj.) Anoka County project coordinates by static GPS methods.

April 23, 2013 - Found cast iron monument down 0.6'±. Verified position by VRS GPS methods. Updated ties.

March 23, 2018 - Found cast iron monument down 0.6'± w/angle iron post on the east side of road. Verified position by VRS GPS methods. Updated ties.