

# CERTIFICATE OF LOCATION OF GOVERNMENT CORNER

County of Anoka

State of Minnesota

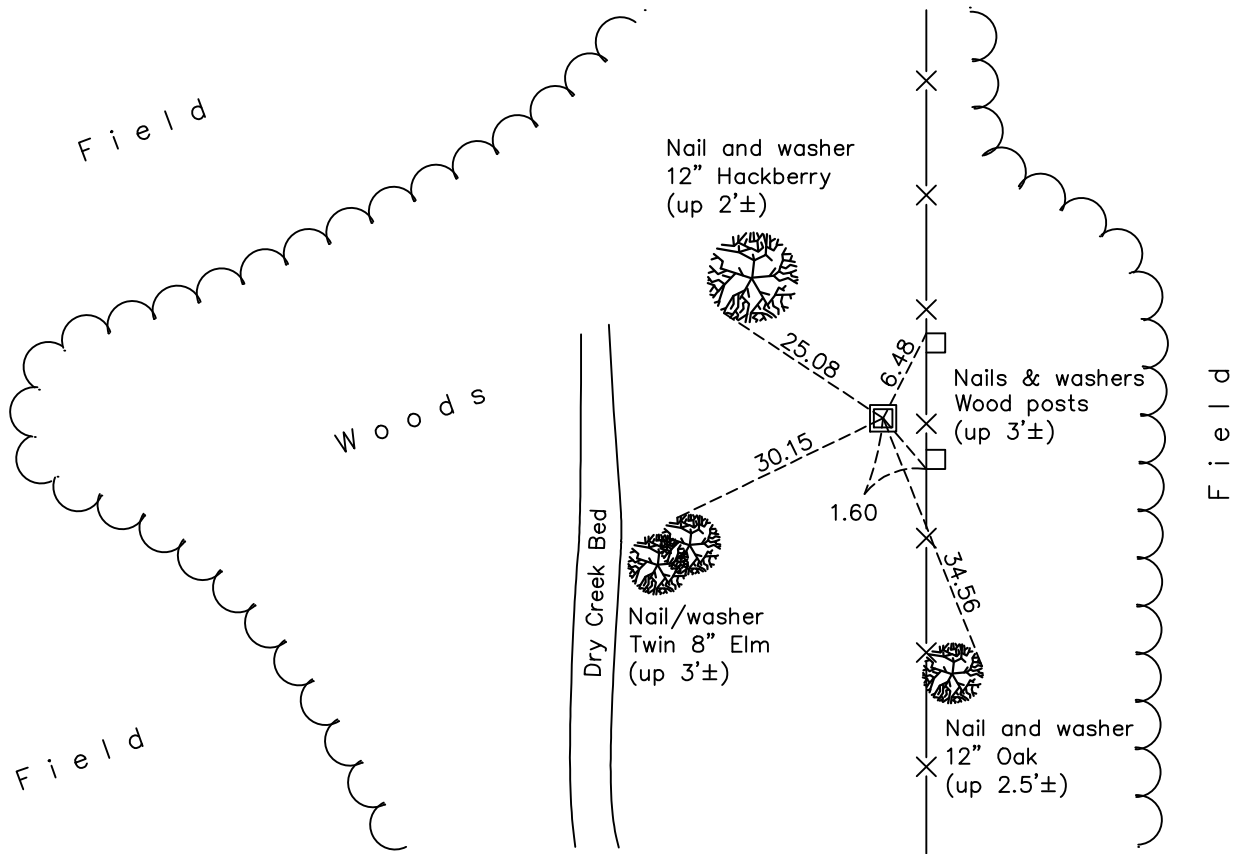
## West 1/4 Corner of Sec. 14 Township 33 Range 25

On the 12th day of January, 1973, the described corner was evidenced by area resurvey

and to perpetuate the location of said corner, at the exact location thereof, a permanent marker was placed consisting of a 2" square steel Telspar monument with punch marked cap and sign

AND on the 18th day of June, 2019, said permanent marker was Replaced CIM with a 2" sq. steel Telspar monument w/punchmarked cap up 3'± using static GPS methods. Updated ties.

Updated reference ties are as shown below.



Revision Date

6/7/21

N.A.D. 1983 Coordinates  
(1996 Adjustment)

County Project Coordinates	
Northing	<u>214600.0826</u>
Easting	<u>458147.3663</u>
Date	<u>2/18/13</u>

I hereby certify that this United States public land survey monument record is correct and complete to the best of my knowledge and belief.

*David M Zieglmeier* Date 6/9/21

David M. Zieglmeier, Anoka County Surveyor

Minnesota License Number 46179

# HISTORY OF GOVERNMENT CORNER

Page No. 56

County of Anoka

State of Minnesota

## West 1/4 Corner of Sec. 14 Township 33 Range 25

### **CORNER HISTORY:**

May 1855 - This corner was established by James M. Marsh, Deputy Surveyor. Marsh marked the position by "set quarter section post" with one bearing tree marked as an accessory.

January 12, 1973 - Set temporary 1/2" iron pipe using area resurvey. Established ties to iron pipe.

April 13, 1973 - Replaced 1/2" iron pipe with a cast iron monument. Set sign and post on the north side.

July 31, 1973 - Found cast iron monument and updated ties.

July 22, 1976 - Found cast iron monument and updated ties.

July 18, 1979 - Found cast iron monument and updated ties.

August 5, 1982 - Found cast iron monument and updated ties.

July 11, 1985 - Found cast iron monument and updated ties.

June 28, 1989 - Found cast iron monument and updated ties.

July 19, 1994 - Found cast iron monument and updated ties.

February 18, 2003 - Established NAD 1983 (1996 adj.) Anoka County project coordinates by static GPS methods.

February 20, 2003 - Found cast iron monument and updated ties.

October 21, 2013 - Found cast iron monument and updated ties.

January 29, 2018 - Found cast iron monument up 0.7'± and leaning northwesterly in need of a reset.

June 18, 2019 - Replaced leaning cast iron monument with a 2" square steel Telspar monument w/punch marked cap up 3'± using static GPS methods. Updated ties.