

# CERTIFICATE OF LOCATION OF GOVERNMENT CORNER

County of Anoka

State of Minnesota

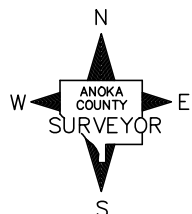
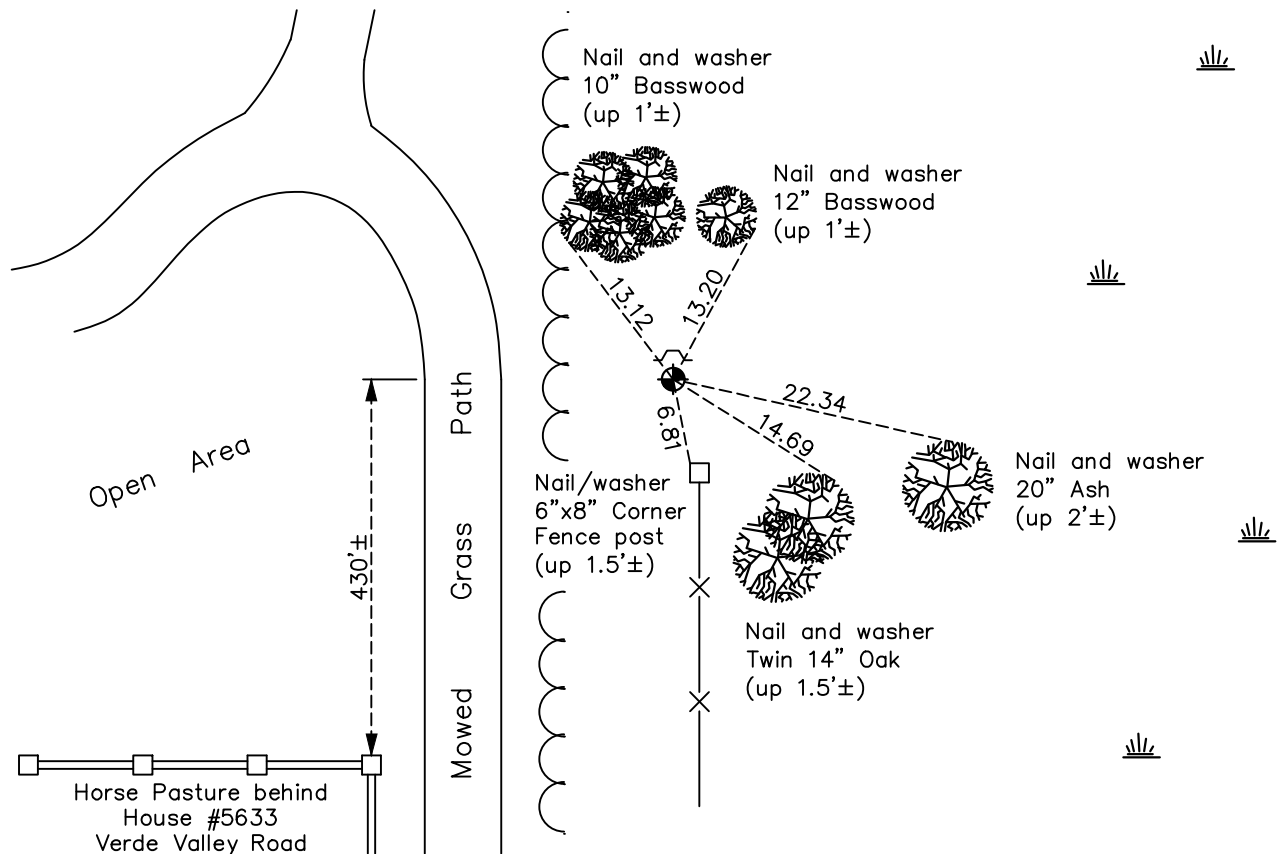
## West 1/4 Corner of Sec. 13 Township 33 Range 25

On the 18th day of December, 1972, the described corner was evidenced by an iron pipe  
from area resurvey

and to perpetuate the location of said corner, at the exact location thereof, a permanent marker  
 was placed consisting of a cast iron monument with a sign and post on the north side

AND on the 22nd day of January, 2018, said permanent marker was found and the ties  
were updated

Updated reference ties are as shown below.



Revision Date

4/17/18

N.A.D. 1983 Coordinates  
 (1996 Adjustment)

County Project Coordinates	
Northing	214519.7869
Easting	463377.1647
Date	2/13/03

I hereby certify that this United States public land survey monument record is correct and complete to the best of my knowledge and belief.

*David M. Zieglsmeier* Date 6/9/21

David M. Zieglsmeier, Anoka County Surveyor

Minnesota License Number 46179

# HISTORY OF GOVERNMENT CORNER

Page No. 57

County of Anoka

State of Minnesota

West 1/4 Corner of Sec. 13 Township 33 Range 25

## **CORNER HISTORY:**

May 1855 - This corner was established by James M. Marsh, Deputy Surveyor. Marsh marked the position by "set quarter section post" with two bearing trees marked as accessories.

May 4, 1967 - Set cast iron monument flush using area resurvey. Established ties to monument.

July 16, 1969 - Found cast iron monument and updated ties.

December 18, 1972 - Set temporary 1/2" iron pipe in new position using area resurvey. Established ties to iron pipe.

July 30, 1973 - Replaced temporary 1/2" iron pipe with cast iron monument. Updated ties. Set sign and post on the north side.

July 22, 1976 - Found cast iron monument and updated ties.

July 18, 1979 - Found cast iron monument and updated ties.

August 5, 1982 - Found cast iron monument and updated ties.

July 11, 1985 - Found cast iron monument and updated ties.

July 11, 1989 - Found cast iron monument and updated ties.

July 20, 1994 - Found cast iron monument and updated ties.

February 13, 2003 - Found cast iron monument and updated ties. Established NAD 1983 (1996 adj.) Anoka County project coordinates by static GPS methods.

May 17, 2013 - Found cast iron monument and updated ties.

January 22, 2018 - Found cast iron monument down 0.1'± and updated ties.