

CERTIFICATE OF LOCATION OF GOVERNMENT CORNER

County of Anoka

State of Minnesota

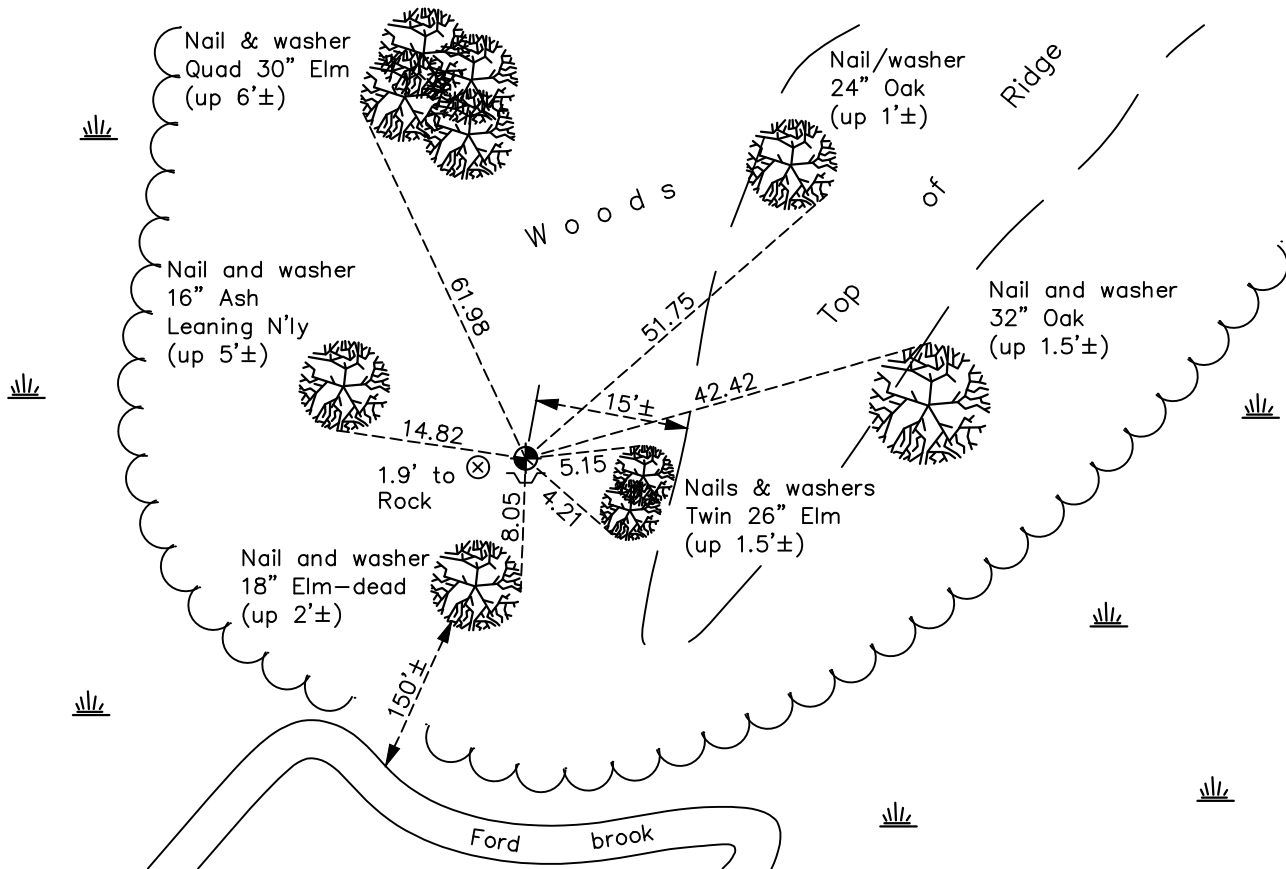
Northwest Corner of Sec. 24 Township 33 Range 25

On the 21st day of August, 1964, the described corner was evidenced by a rock used by Leroy Winner

and to perpetuate the location of said corner, at the exact location thereof, a permanent marker was placed consisting of a cast iron monument set by Leroy Winner in 1976

AND on the day of March, 2018, said permanent marker was found down 0.1'± with a sign and post on the south side. The ties were updated

Updated reference ties are as shown below.



Revision Date

4/18/18

N.A.D. 1983 Coordinates
(1996 Adjustment)

County Project Coordinates	
Northing	<u>211912.3642</u>
Easting	<u>463371.2827</u>
Date	<u>2/13/03</u>

I hereby certify that this United States public land survey monument record is correct and complete to the best of my knowledge and belief.

David M. Zieglmeier Date 6/9/21

David M. Zieglmeier, Anoka County Surveyor

Minnesota License Number 46179

HISTORY OF GOVERNMENT CORNER

Page No. 60

County of Anoka

State of Minnesota

Northwest Corner of Sec. 24 Township 33 Range 25

CORNER HISTORY:

May 1855 - This corner was established by James M. Marsh, Deputy Surveyor. Marsh marked the position by "set post corner of sections 13, 14, 23 and 24" with two bearing trees marked as accessories.

March 7, 1964 - Leroy Winner found a pointed rock which 2 property owners testified stone has been used as section corner since before 1900. Established ties rock.

August 21, 1964 - Found pointed rock that Leroy Winner used. Chiseled "X" on top of rock and updated ties.

August 26, 1965 - Found pointed rock and updated ties.

July 18, 1969 - Found pointed rock and updated ties.

August 7, 1973- Found pointed rock and updated ties.

July 23, 1976 - Found pointed rock and updated ties.

October 25, 1976 - Leroy Winner set cast iron monument and updated ties.

August 5, 1982 - Found cast iron monument and updated ties.

July 11, 1985 - Found cast iron monument and updated ties.

July 12, 1989 - Found cast iron monument and updated ties.

February 13, 2003 - Established NAD 1983 (1996 adj.) Anoka County project coordinates by static GPS methods.

February 13, 2004 - Found cast iron monument and updated ties.

November 7, 2013 - Found cast iron monument and updated ties. Set a sign and post of the south side.

March 2018 - Found cast iron monument down 0.1'± and updated ties.