

CERTIFICATE OF LOCATION OF GOVERNMENT CORNER

County of Anoka

State of Minnesota

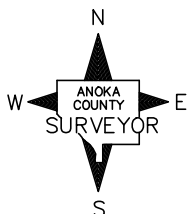
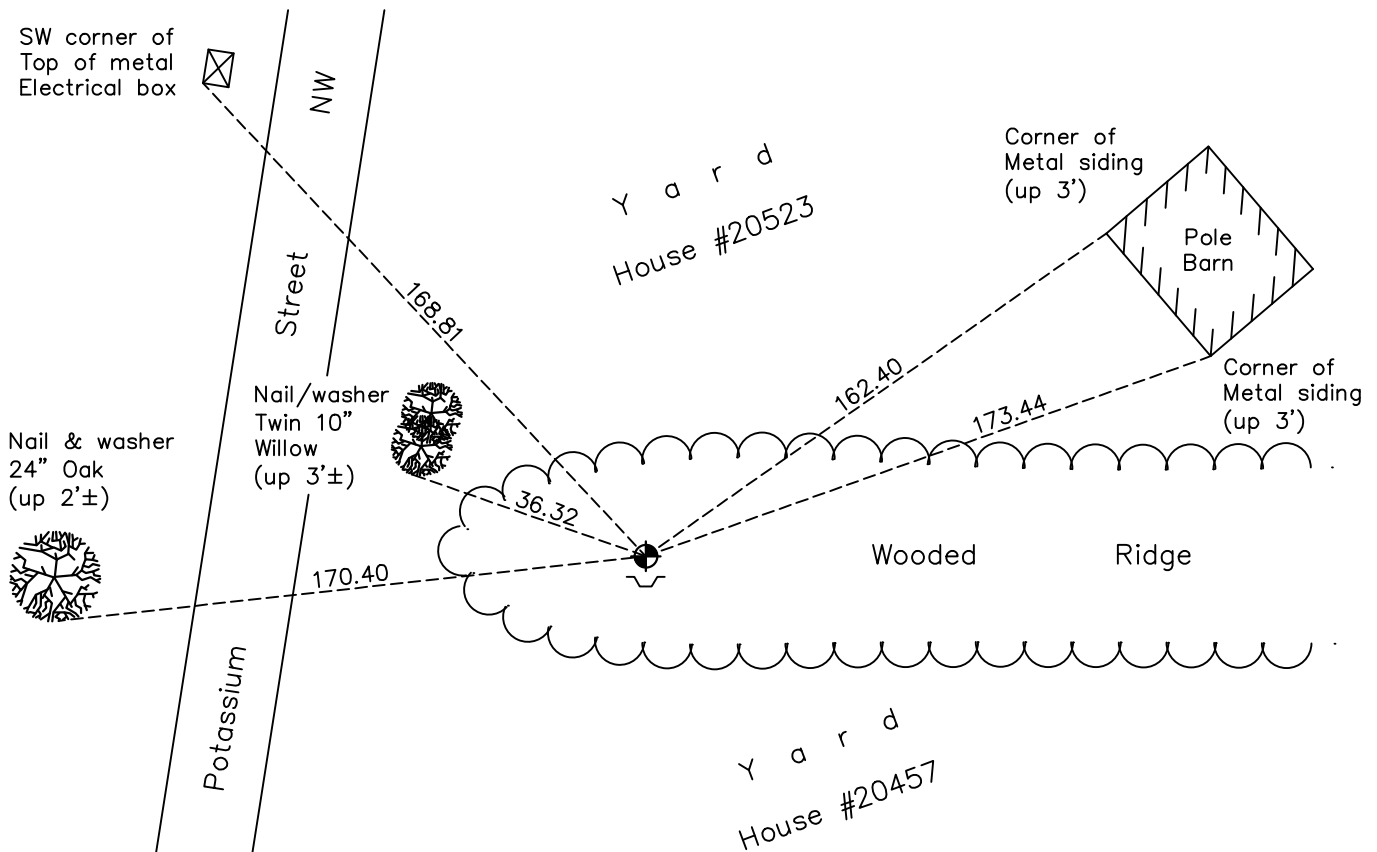
South $\frac{1}{4}$ Corner of Sec. 14 Township 33 Range 25

On the 15th day of December, 1972, the described corner was evidenced by area resurvey

and to perpetuate the location of said corner, at the exact location thereof, a permanent marker was placed consisting of a cast iron monument with a sign and post on the south side

AND on the 22nd day of January, 2018, said permanent marker was found flush and the ties were updated

Updated reference ties are as shown below.



Revision Date

4/18/18

N.A.D. 1983 Coordinates
(1996 Adjustment)

County Project Coordinates	
Northing	<u>211939.5846</u>
Easting	<u>460752.2906</u>
Date	<u>2/11/03</u>

I hereby certify that this United States public land survey monument record is correct and complete to the best of my knowledge and belief.

David M Zieglmeier Date 6/9/21

David M. Zieglmeier, Anoka County Surveyor

Minnesota License Number 46179

HISTORY OF GOVERNMENT CORNER

Page No. 61

County of Anoka

State of Minnesota

South 1/4 Corner of Sec. 14 Township 33 Range 25

CORNER HISTORY:

May 1855 - This corner was established by James M. Marsh, Deputy Surveyor. Marsh marked the position by "set quarter section post" with two bearing trees marked as accessories.

December 15, 1972 - Set iron pipe using area resurvey. Established ties to iron pipe.

April 11, 1973 - Set cast iron monument with sign and post 1'± north.

July 24, 1973 - Found cast iron monument and updated ties.

July 23, 1976 - Found cast iron monument in good condition. Corner ties unavailable.

February 4, 1977 - Found cast iron monument and updated ties.

July 11, 1979 - Found cast iron monument and updated ties.

August 3, 1982 - Found cast iron monument and updated ties.

July 8, 1985 - Found cast iron monument and updated ties.

July 7, 1989 - Found cast iron monument and updated ties.

July 8, 1994 - Found cast iron monument and updated ties.

February 11, 2003 - Established NAD 1983 (1996 adj.) Anoka County project coordinates by static GPS methods.

March 20, 2013 - Found cast iron monument w/sign and post on the south side. Verified position by VRS GPS methods. Updated ties.

January 22, 2018 - Found cast iron monument flush. Verified position by VRS GPS methods. Updated ties.