

CERTIFICATE OF LOCATION OF GOVERNMENT CORNER

County of Anoka

State of Minnesota

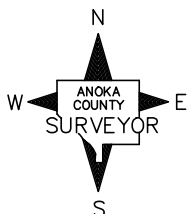
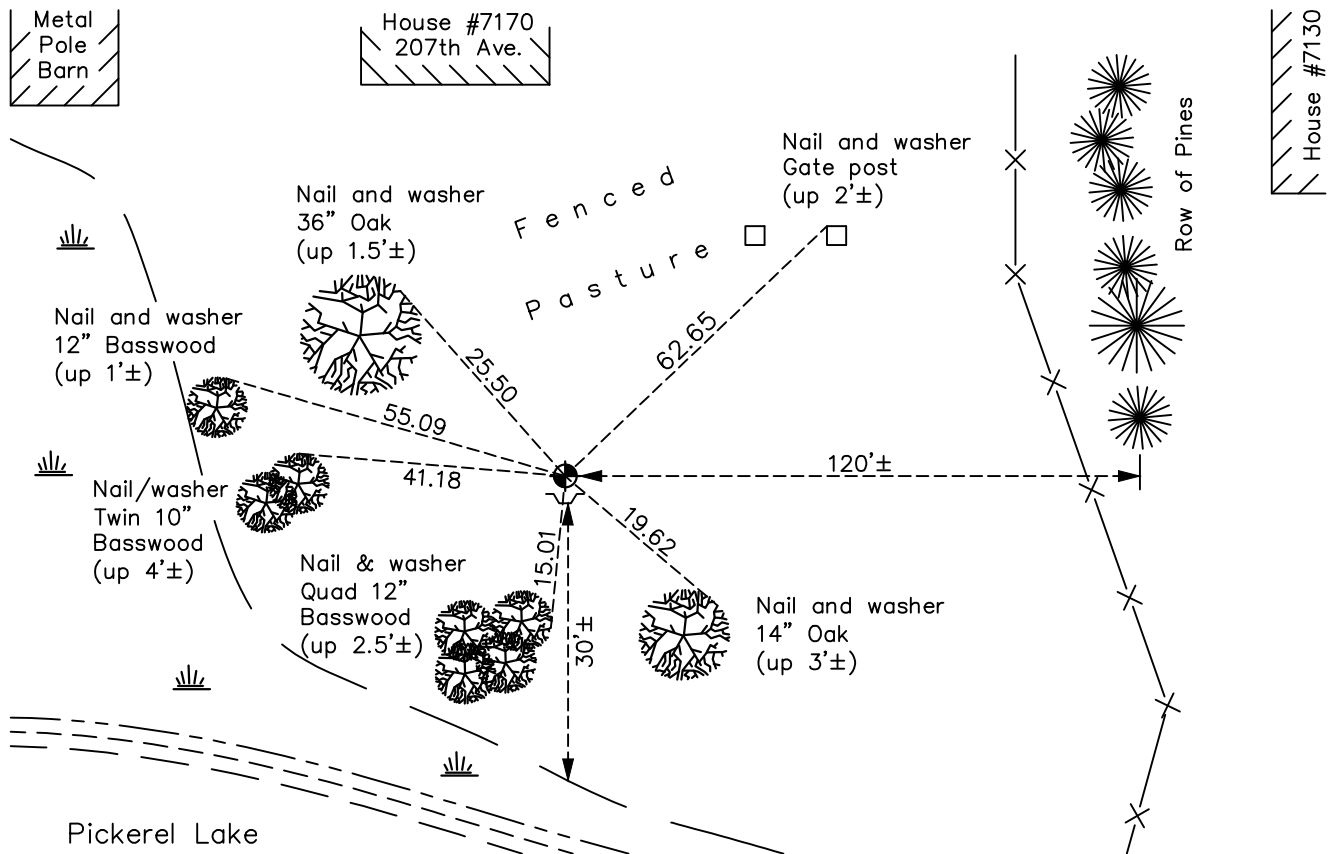
Witness Corner of Sec. 15 Township 33 Range 25
 (On the south line of SW 1/4)

On the 17th day of April, 1985, the described corner was evidenced by area resurvey

and to perpetuate the location of said corner, at the exact location thereof, a permanent marker was placed consisting of a cast iron monument with a sign and post on the south side

AND on the 31st day of January, 2018, said permanent marker was found up 0.1'± and the ties were updated

Updated reference ties are as shown below.



Revision Date

4/18/18

N.A.D. 1983 Coordinates
(1996 Adjustment)

County Project Coordinates	
Northing	<u>211994.4682</u>
Easting	<u>453115.3933</u>
Date	<u>2/18/03</u>

I hereby certify that this United States public land survey monument record is correct and complete to the best of my knowledge and belief.

David M Zieglmeier Date 6/9/21

David M. Zieglmeier, Anoka County Surveyor
Minnesota License Number 46179

HISTORY OF GOVERNMENT CORNER

Page No. 63A

County of Anoka

State of Minnesota

Witness Corner of Sec. 15 Township 33 Range 25
(On the south line of SW 1/4)

CORNER HISTORY:

April 17, 1985 - Set cast iron monument flush using area resurvey. Established ties to monument. Set sign and post on the south side.

July 13, 1989 - Found cast iron monument and updated ties.

July 13, 1994 - Found cast iron monument and updated ties.

February 18, 2003 - Established NAD 1983 (1996 adj.) Anoka County project coordinates by static GPS methods.

March 21, 2013 - Found cast iron monument. Verified position by VRS GPS methods. Updated ties.

January 31, 2018 - Found cast iron monument up 0.1'±. Verified position by VRS GPS methods. Updated ties.