

# CERTIFICATE OF LOCATION OF GOVERNMENT CORNER

County of Anoka

State of Minnesota

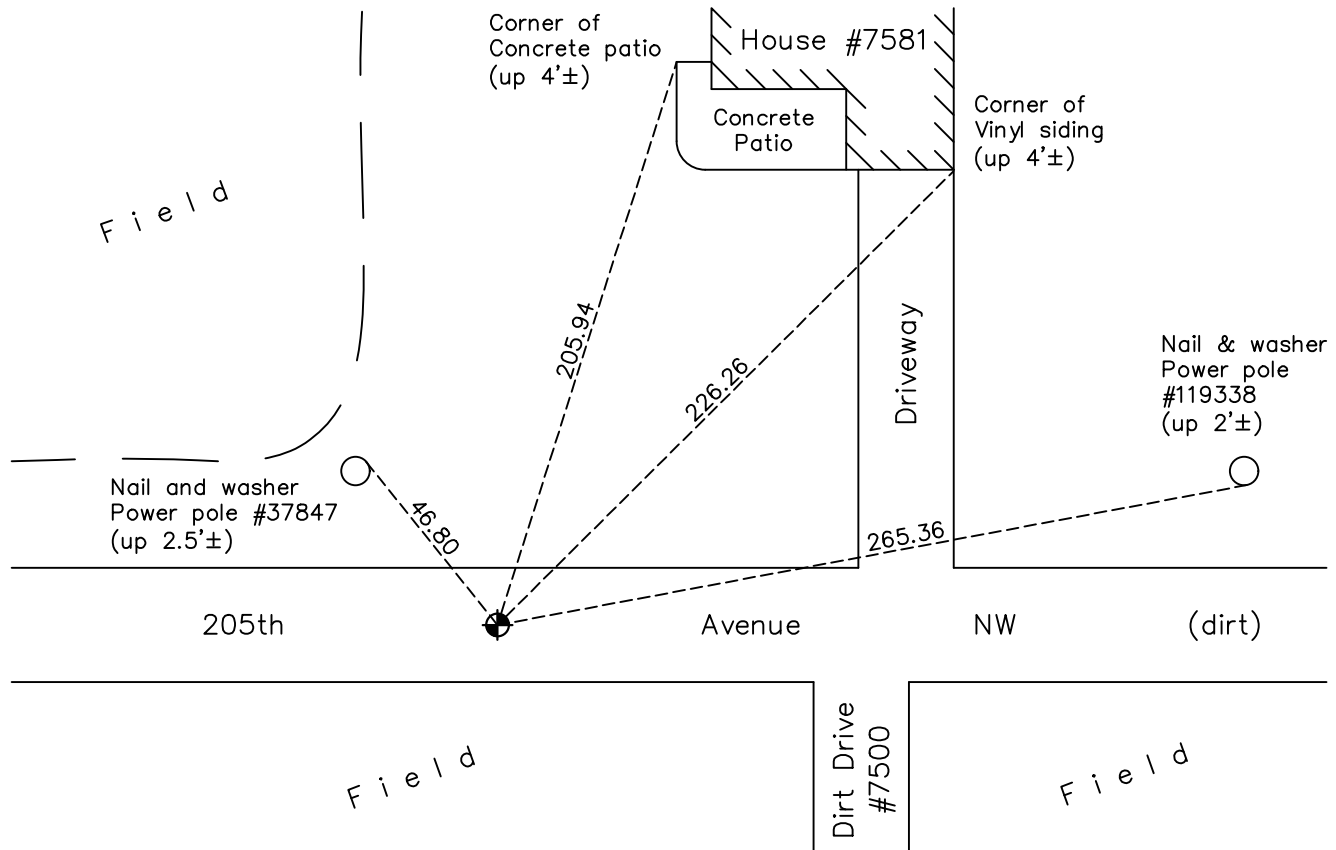
## North $\frac{1}{4}$ Corner of Sec. 21 Township 33 Range 25

On the 1st day of August, 1973, the described corner was evidenced by a  $\frac{1}{2}$ " iron rod  
found by N.C. Hoium

and to perpetuate the location of said corner, at the exact location thereof, a permanent marker  
 was placed consisting of a cast iron monument

AND on the 23rd day of March, 2018, said permanent marker was found down 0.5'± and  
the ties were updated

Updated reference ties are as shown below.



Revision Date

4/18/18

N.A.D. 1983 Coordinates  
 (1996 Adjustment)

County Project Coordinates	
Northing	<u>212025.3262</u>
Easting	<u>450239.3572</u>
Date	<u>9/24/02</u>

I hereby certify that this United States public land survey monument record is correct and complete to the best of my knowledge and belief.

*David M Zieglmeier* Date 6/9/21

David M. Zieglmeier, Anoka County Surveyor

Minnesota License Number 46179

# HISTORY OF GOVERNMENT CORNER

Page No. 65

County of Anoka

State of Minnesota

North 1/4 Corner of Sec. 21 Township 33 Range 25

## **CORNER HISTORY:**

May 1855 - This corner was established by James M. Marsh, Deputy Surveyor. Marsh marked the position by "set quarter section post" with one bearing tree marked as an accessory.

January 9, 1966 - N.C. Hoium found a 1/2" iron rod in centerline of dirt road. Established ties to iron rod.

August 1, 1973 - Replaced 1/2" iron rod with cast iron monument down 0.4'±. Updated ties.

July 20, 1976 - Found cast iron monument and updated ties.

July 11, 1979 - Found cast iron monument and updated ties.

August 2, 1982 - Found cast iron monument and updated ties.

July 8, 1985 - Found cast iron monument and updated ties.

September 1, 1988 - Found cast iron monument and updated ties.

July 5, 1994 - Found cast iron monument and updated ties.

September 24, 2002 - Established NAD 1983 (1996 adj.) Anoka County project coordinates by static GPS methods.

November 1, 2013 - Found cast iron monument down 0.5'±. Verified position by VRS GPS methods. Updated ties.

March 23, 2018 - Found cast iron monument down 0.5'±. Verified position by VRS GPS methods. Updated ties.