

CERTIFICATE OF LOCATION OF GOVERNMENT CORNER

County of Anoka

State of Minnesota

Witness Corner of Sec. 16 Township 33 Range 25

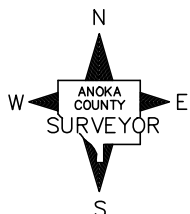
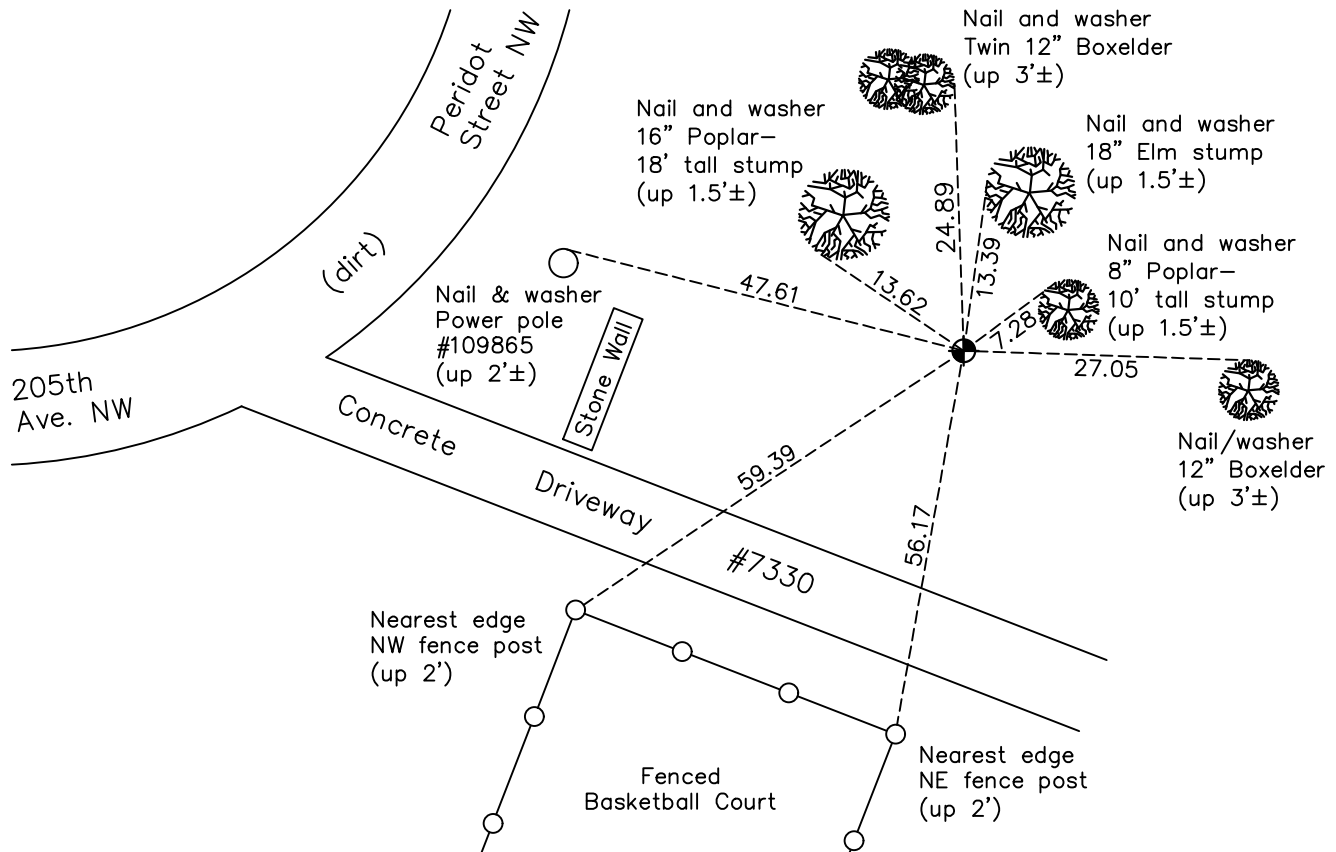
(On the south line of SE 1/4)

On the 17th day of April, 1985, the described corner was evidenced by area resurvey

and to perpetuate the location of said corner, at the exact location thereof, a permanent marker was placed consisting of a cast iron monument

AND on the 31st day of January, 2018, said permanent marker was found down 0.1'± and the ties were updated

Updated reference ties are as shown below.



Revision Date

4/18/18

N.A.D. 1983 Coordinates
(1996 Adjustment)

County Project Coordinates	
Northing	<u>212003.3686</u>
Easting	<u>452121.5593</u>
Date	<u>10/30/02</u>

I hereby certify that this United States public land survey monument record is correct and complete to the best of my knowledge and belief.

David M Ziegmeier Date 6/9/21

David M. Ziegmeier, Anoka County Surveyor

Minnesota License Number 46179

HISTORY OF GOVERNMENT CORNER

Page No. 65A

County of Anoka

State of Minnesota

Witness Corner of Sec. 16 Township 33 Range 25
(On the south line of SE 1/4)

CORNER HISTORY:

April 17, 1985 - Set cast iron monument flush using area resurvey. Established ties to monument. Set sign and post on the north side.

June 27, 1989 - Found cast iron monument and updated ties.

June 27, 1994- Found cast iron monument and updated ties.

July 2, 1998 - Found cast iron monument and updated ties.

October 30, 2002 - Found cast iron monument and updated ties. Established NAD 1983 (1996 adj.) Anoka County project coordinates by static GPS methods.

March 21, 2013 - Found cast iron monument down 0.1'±. Verified position by VRS GPS methods. Updated ties.

April 21, 2014 - Found cast iron monument down 0.1'± and updated ties. Sign and post removed at property owners request.

January 31, 2018 - Found cast iron monument down 0.1'±. Verified position by VRS GPS methods. Updated ties.