

CERTIFICATE OF LOCATION OF GOVERNMENT CORNER

County of Anoka

State of Minnesota

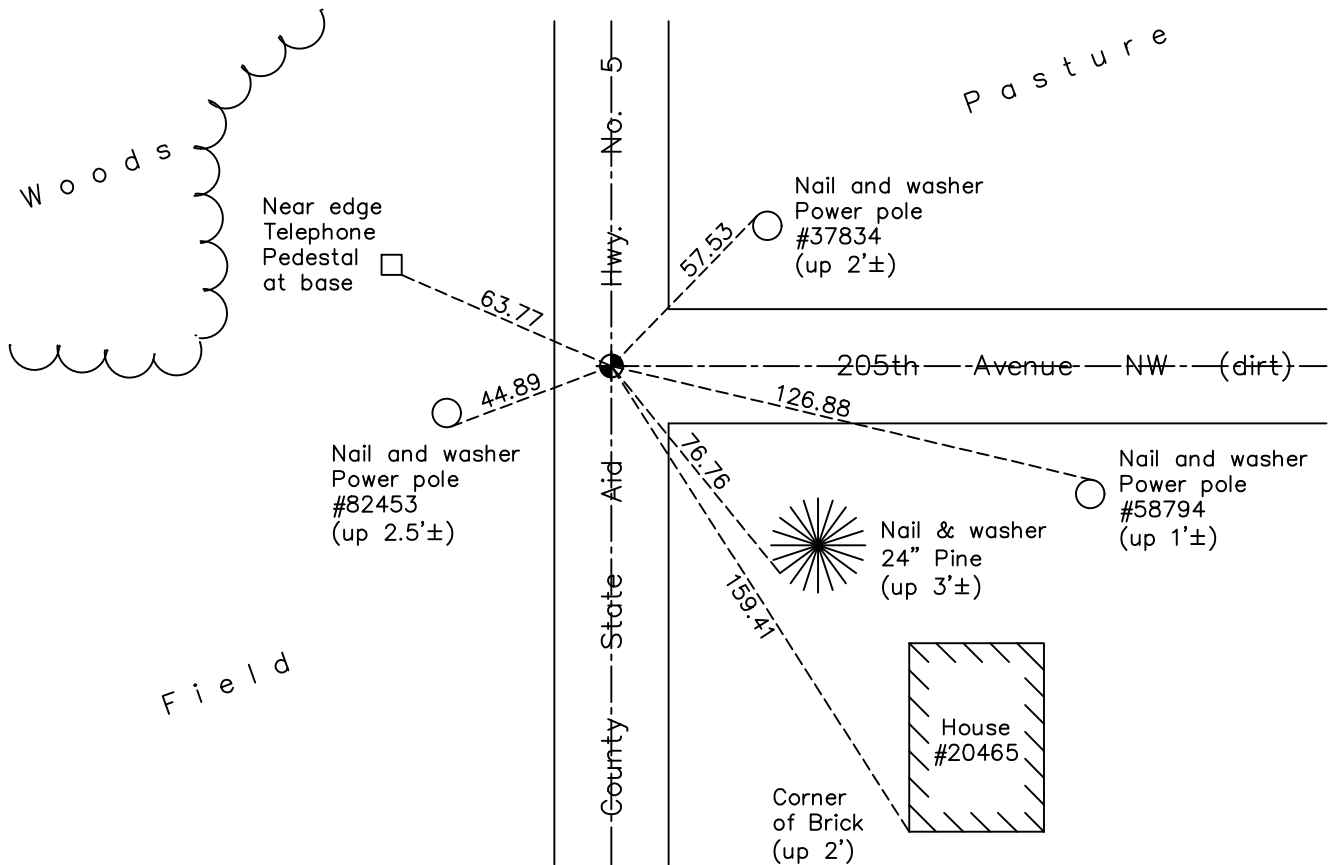
Northwest Corner of Sec. 21 Township 33 Range 25

On the 3rd day of July, 1961, the described corner was evidenced by a 1/2" iron pipe

and to perpetuate the location of said corner, at the exact location thereof, a permanent marker was placed consisting of a cast iron monument

AND on the 16th day of January, 2018, said permanent marker was found and the ties were updated

Updated reference ties are as shown below.



Revision Date

4/19/18

N.A.D. 1983 Coordinates
(1996 Adjustment)

County Project Coordinates	
Northing	<u>212060.5962</u>
Easting	<u>447592.5520</u>
Date	<u>8/21/02</u>

I hereby certify that this United States public land survey monument record is correct and complete to the best of my knowledge and belief.

David M. Zieglmeier Date 6/9/21

David M. Zieglmeier, Anoka County Surveyor

Minnesota License Number 46179

HISTORY OF GOVERNMENT CORNER

Page No. 66

County of Anoka

State of Minnesota

Northwest Corner of Sec. 21 Township 33 Range 25

CORNER HISTORY:

May 1855 - This corner was established by James M. Marsh, Deputy Surveyor. Marsh marked the position by "set post corner of sections 16, 17, 20 and 21" with two bearing trees marked as accessories.

July 3, 1961 - Found 1/2" iron down 0.15'± in centerline of blacktop County Rd. #5. Established ties to iron.

August 6, 1965 - Found 1/2" iron and updated ties.

July 2, 1969 - Found 1/2" iron down 0.25'± and updated ties.

July 14, 1969 - Replaced 1/2" iron with cast iron monument flush. Updated ties.

July 23, 1973 - Found cast iron monument and updated ties.

July 26, 1976 - Found cast iron monument and updated ties.

July 11, 1979 - Found cast iron monument and updated ties.

August 2, 1982 - Found cast iron monument and updated ties.

June 28, 1985 - Found cast iron monument and updated ties.

August 25, 1988 - Found cast iron monument and updated ties.

June 27, 1994 - Found cast iron monument and updated ties.

April 18, 1997 - Found cast iron monument and set construction ties prior to construction.

October 27, 1998 - Set cast iron monument after construction and updated ties.

August 21, 2002 - Established NAD 1983 (1996 adj.) Anoka County project coordinates by static GPS methods.

September 24, 2002 - Found cast iron monument and updated ties.

October 11, 2013 - Found cast iron monument on centerline and centerline. Verified position by VRS GPS methods. Updated ties.

January 16, 2018 - Found cast iron monument. Verified position by VRS GPS methods. Updated ties.