

CERTIFICATE OF LOCATION OF GOVERNMENT CORNER

County of Anoka

State of Minnesota

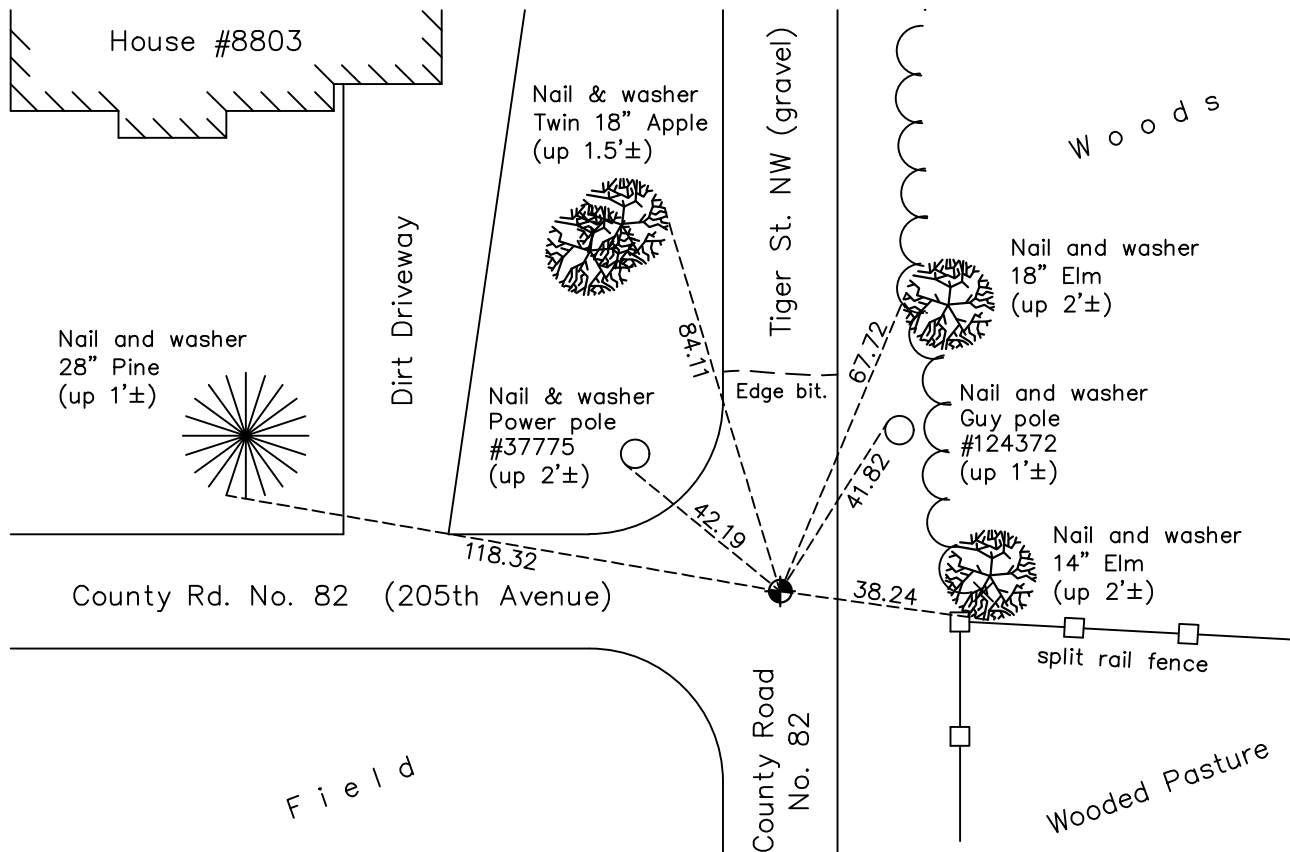
Northeast Corner of Sec. 19 Township 33 Range 25

On the 7th day of August, 1961, the described corner was evidenced by a 60d spike

and to perpetuate the location of said corner, at the exact location thereof, a permanent marker was placed consisting of a cast iron monument

AND on the 9th day of January, 2018, said permanent marker was found flush and the ties were updated

Updated reference ties are as shown below.



Revision Date

4/19/18

N.A.D. 1983 Coordinates
(1996 Adjustment)

County Project Coordinates	
Northing	212117.0629
Easting	442332.6745
Date	9/03/02

I hereby certify that this United States public land survey monument record is correct and complete to the best of my knowledge and belief.

David M Ziegmeier Date 6/9/21

David M. Ziegmeier, Anoka County Surveyor

Minnesota License Number 46179

HISTORY OF GOVERNMENT CORNER

Page No. 68

County of Anoka

State of Minnesota

Northeast Corner of Sec. 19 Township 33 Range 25

CORNER HISTORY:

May 1855 - This corner was established by James M. Marsh, Deputy Surveyor. Marsh marked the position by "set post corner of sections 17, 18, 19 and 20" with two bearing trees marked as accessories.

August 7, 1961 - Replaced 60 penny spike with a cast iron monument down 0.5'±. Updated ties.

August 5, 1965 - Found cast iron monument and updated ties.

July 9, 1968 - Found cast iron monument and added additional ties prior to construction. Removed monument.

July 7, 1969 - Set cast iron monument after construction using ties. Updated ties.

July 25, 1973 - Found cast iron monument and updated ties.

July 26, 1976 - Found cast iron monument and updated ties.

October 31, 1980 - Found cast iron monument and updated ties.

July 30, 1982 - Found cast iron monument and updated ties.

August 26, 1988 - Found cast iron monument and updated ties.

June 27, 1994 - Found cast iron monument and updated ties.

September 3, 2002 - Established NAD 1983 (1996 adj.) Anoka County project coordinates by static GPS methods.

April 12, 2013 - Found cast iron monument down 0.5'±. Verified position by VRS GPS methods. Updated ties.

June 9, 2014 - Found cast iron monument, verified position by VRS GPS methods and updated ties prior to construction. Removed monument.

July 10, 2014 - Set cast iron monument after construction using static GPS methods. Verified position by VRS GPS methods. Updated ties.

January 9, 2018 - Found cast iron monument flush. Verified position by VRS GPS methods. Updated ties.