

CERTIFICATE OF LOCATION OF GOVERNMENT CORNER

County of Anoka

State of Minnesota

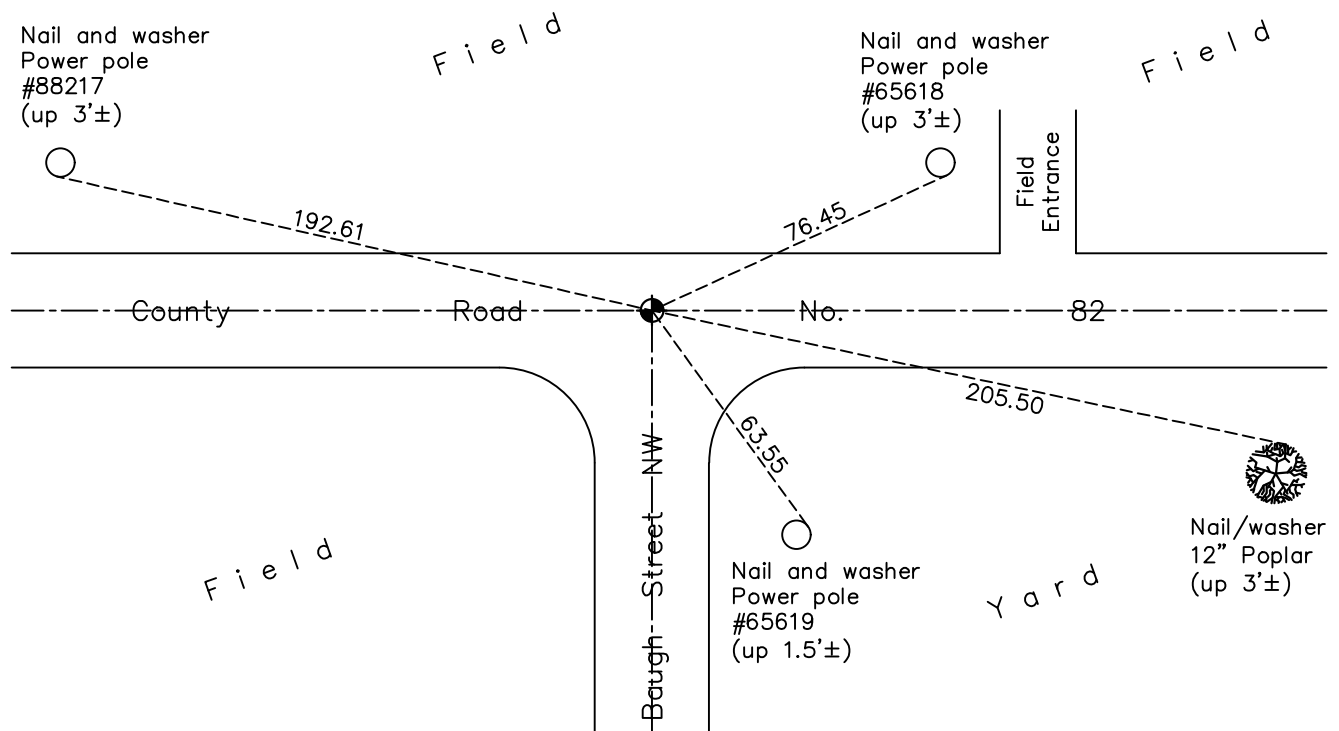
North $\frac{1}{4}$ Corner of Sec. 19 Township 33 Range 25

On the 21st day of August, 1964, the described corner was evidenced by area resurvey

and to perpetuate the location of said corner, at the exact location thereof, a permanent marker was placed consisting of a cast iron monument

AND on the 10th day of January, 2018, said permanent marker was found flush and the ties were updated

Updated reference ties are as shown below.



ANOKA COUNTY SURVEYOR

Revision Date

4/19/18

N.A.D. 1983 Coordinates
(1996 Adjustment)

County Project Coordinates	
Northing	<u>212124.7690</u>
Easting	<u>439696.7565</u>
Date	<u>8/21/02</u>

I hereby certify that this United States public land survey monument record is correct and complete to the best of my knowledge and belief.

David M Zieglmeier Date 6/9/21

David M. Zieglmeier, Anoka County Surveyor

Minnesota License Number 46179

HISTORY OF GOVERNMENT CORNER

Page No. 69

County of Anoka

State of Minnesota

North 1/4 Corner of Sec. 19 Township 33 Range 25

CORNER HISTORY:

May 1855 - This corner was established by James M. Marsh, Deputy Surveyor. Marsh marked the position by "set quarter section post" with one bearing tree marked as an accessory.

August 21, 1964 - Set cast iron monument in dirt road using area resurvey. Established ties to monument.

August 5, 1965 - Found cast iron monument and updated ties.

July 8, 1969 - Found cast iron monument and updated ties.

August 3, 1973 - Replaced solid cast iron monument w/removable top cast iron monument flush. Updated ties.

March 26, 1975 - Found cast iron monument flush and updated ties.

July 26, 1976 - Found cast iron monument and updated ties.

October 31, 1980 - Found cast iron monument and updated ties.

July 30, 1982 - Found cast iron monument down 0.5'± and updated ties.

July 8, 1985 - Found cast iron monument and updated ties.

August 26, 1988 - Found cast iron monument and updated ties.

June 27, 1994 - Found cast iron monument and updated ties.

August 21, 2002 - Established NAD 1983 (1996 adj.) Anoka County project coordinates by static GPS methods.

April 23, 2013 - Found cast iron monument. Verified position by VRS GPS methods. Updated ties.

June 9, 2014 - Found cast iron monument, verified position by VRS GPS methods and updated ties prior to construction. Removed monument.

July 10, 2014 - Set cast iron monument after construction using static GPS methods. Verified position by VRS GPS methods. Updated ties.

January 10, 2018 - Found cast iron monument flush. Verified position by VRS GPS methods. Updated ties.