

# CERTIFICATE OF LOCATION OF GOVERNMENT CORNER

County of Anoka

State of Minnesota

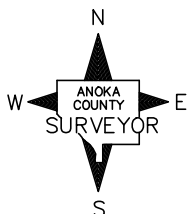
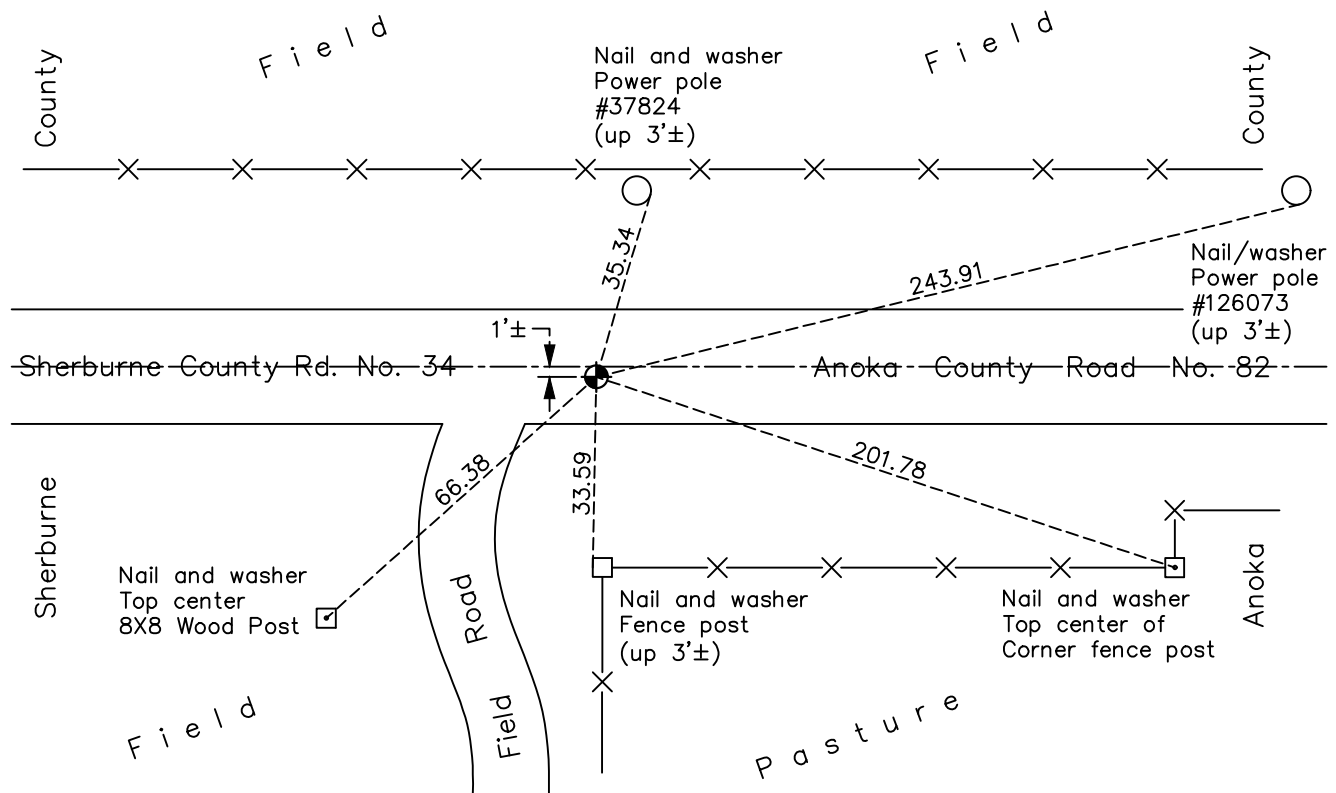
## Northwest Corner of Sec. 19 Township 33 Range 25

On the 17th day of July, 1970, the described corner was evidenced by Sherburne  
County cast iron monument

and to perpetuate the location of said corner, at the exact location thereof, a permanent marker was placed consisting of the same cast iron monument

AND on the 10th day of January, 2018, said permanent marker was found flush and the ties were updated

Updated reference ties are as shown below.



Revision Date

4/19/18

N.A.D. 1983 Coordinates  
(1996 Adjustment)

County Project Coordinates	
Northing	<u>212131.4550</u>
Easting	<u>437352.7462</u>
Date	<u>8/21/02</u>

I hereby certify that this United States public land survey monument record is correct and complete to the best of my knowledge and belief.

*David M Zieglmeier* Date 6/9/21

David M. Zieglmeier, Anoka County Surveyor

Minnesota License Number 46179

# HISTORY OF GOVERNMENT CORNER

Page No. 70

County of Anoka

State of Minnesota

## Northwest Corner of Sec. 19 Township 33 Range 25

### **CORNER HISTORY:**

September 1849 - This corner was established by Theodore Conkey, Deputy Surveyor. Conkey marked the position by "set post corner sections 18, 19, 13 and 24" with three bearing trees marked as accessories.

October 20, 1958 - Casewell found a 6" square granite monument down 0.4'±. Updated ties.

July 3, 1961 - Found 6" square granite monument with a 1/2" iron on north face of monument. Updated ties.

August 5, 1965 - Found granite monument and updated ties.

July 17, 1970 - Found Sherburne County cast iron monument down 1.8'± using ties. Set partial Anoka County cast iron monument on top down 0.6'±. Updated ties.

August 3, 1973 - Replaced solid cast iron monument w/removable top cast iron monument. Updated ties.

July 26, 1976 - Found cast iron monument and updated ties.

July 11, 1979 - Found cast iron monument and updated ties.

July 30, 1982 - Found cast iron monument and updated ties.

July 8, 1985 - Found cast iron monument and updated ties.

August 26, 1988 - Found cast iron monument and updated ties.

August 21, 2002 - Established NAD 1983 (1996 adj.) Anoka County project coordinates by static GPS methods.

October 11, 2013 - Found cast iron monument, verified position by VRS GPS methods and updated ties prior to construction for new culvert. Removed monument on 10/21/2013.

October 31, 2013 - Set Anoka County cast iron monument after culvert construction using static GPS methods. Verified position by VRS GPS methods. Updated ties.

June 9, 2014 - Found cast iron monument, verified position by VRS GPS methods and updated ties prior to road construction. Removed monument.

July 10, 2014 - Set Anoka County cast iron monument after road construction using static GPS methods. Verified position by VRS GPS methods. Updated ties.

January 10, 2018 - Found cast iron monument flush. Verified position by VRS GPS methods. Updated ties.