

# CERTIFICATE OF LOCATION OF GOVERNMENT CORNER

County of Anoka

State of Minnesota

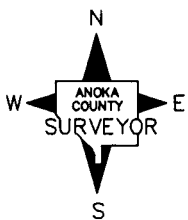
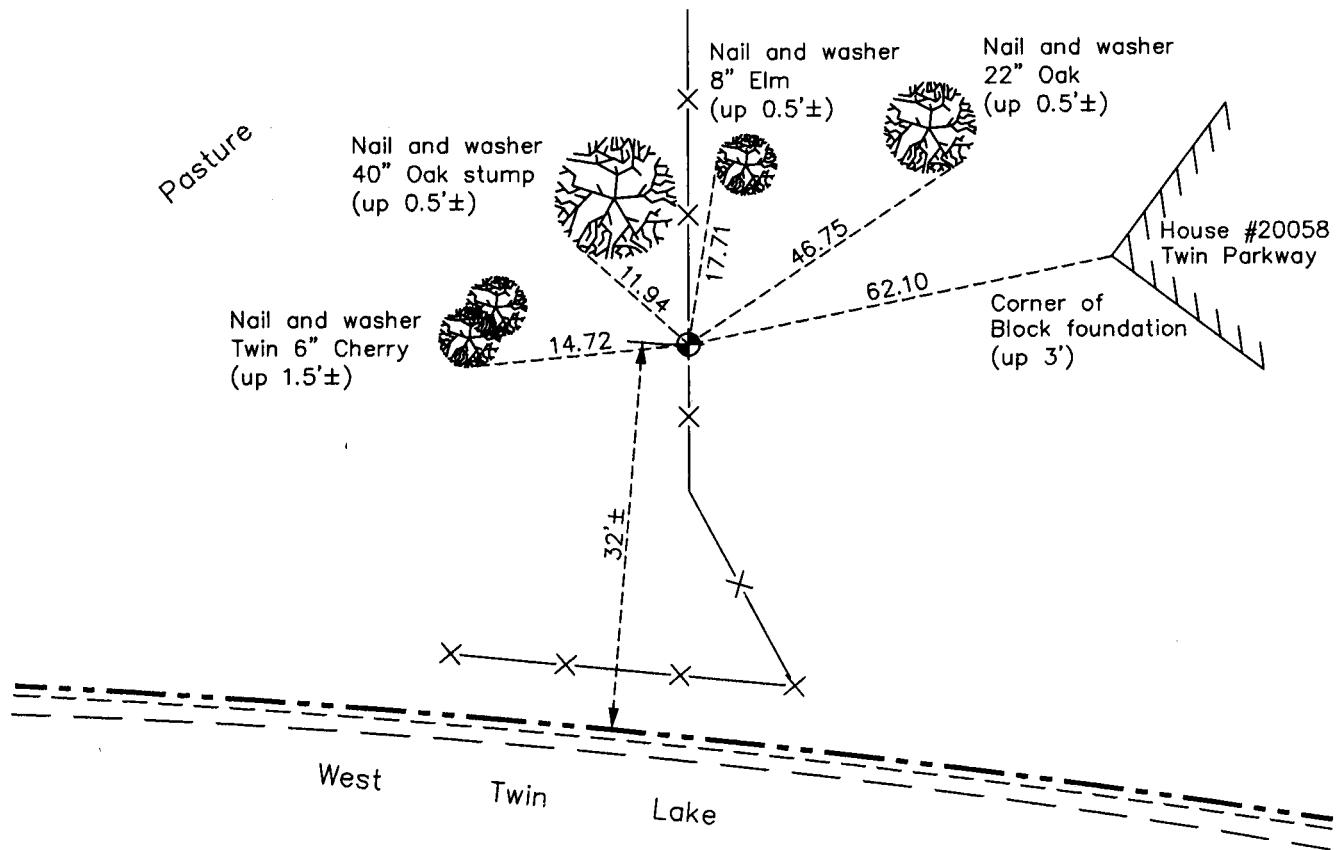
## West 1/4 Corner of Sec. 19 Township 33 Range 25

On the 19th day of November, 1963, the described corner was evidenced by a cast iron monument set by Don Pepper

and to perpetuate the location of said corner, at the exact location thereof, a permanent marker was placed consisting of a cast iron monument

AND on the 12th day of April, 2013, said permanent marker was found up 0.3'± and the ties were updated

Updated reference ties are as shown below.



Revision Date  
2/05/14

N.A.D. 1983 Coordinates  
(1996 Adjustment)

County Project Coordinates	
Northing	209542.3169
Easting	437298.0604
Date	10/30/02

I hereby certify that this United States public land survey monument record is correct and complete to the best of my knowledge and belief.

*Larry D. Hoium* Date 2/05/14

Larry D. Hoium, Anoka County Surveyor

Minnesota License Number 18165