

CERTIFICATE OF LOCATION OF GOVERNMENT CORNER

County of Anoka

State of Minnesota

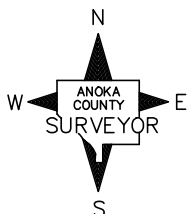
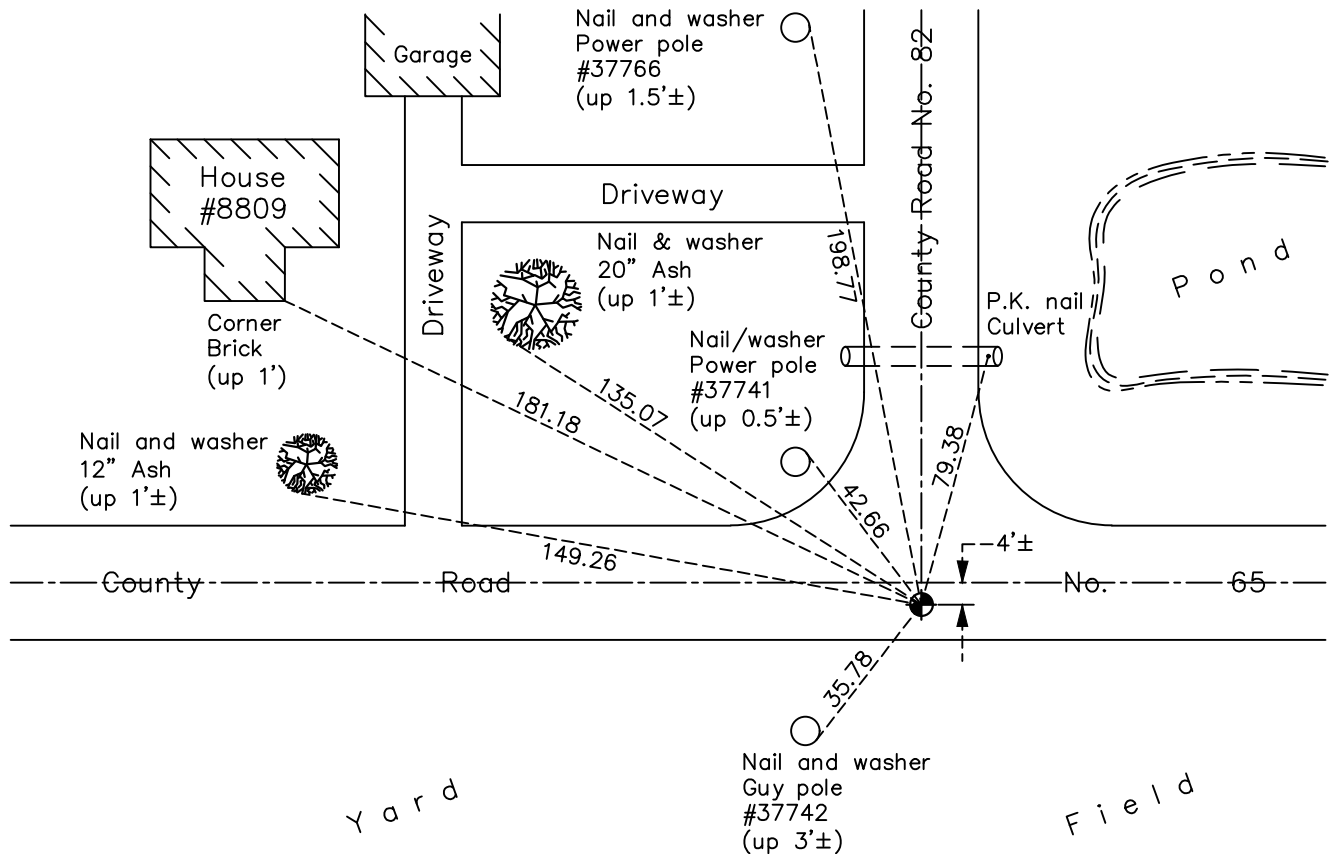
East 1/4 Corner of Sec. 19 Township 33 Range 25

On the 3rd day of October, 1963, the described corner was evidenced by a 3/4" pinched iron pipe

and to perpetuate the location of said corner, at the exact location thereof, a permanent marker was placed consisting of a cast iron monument

AND on the 8th day of July, 2020, said permanent marker was reset with a CIM flush after road construction using static GPS methods. The ties were updated.

Updated reference ties are as shown below.



Revision Date

7/14/20

N.A.D. 1983 Coordinates
(1996 Adjustment)

County Project Coordinates	
Northing	<u>209500.1629</u>
Easting	<u>442363.2797</u>
Date	<u>8/21/02</u>

I hereby certify that this United States public land survey monument record is correct and complete to the best of my knowledge and belief.

David M Zieglsmeier Date 6/9/21

David M. Zieglsmeier, Anoka County Surveyor

Minnesota License Number 46179

HISTORY OF GOVERNMENT CORNER

Page No. 72

County of Anoka

State of Minnesota

East 1/4 Corner of Sec. 19 Township 33 Range 25

CORNER HISTORY:

May 1855 - This corner was established by James M. Marsh, Deputy Surveyor. Marsh marked the position by "set quarter section post" with two bearing trees marked as accessories.

October 20, 1958 - Casewell found a monument (type unknown) and updated ties.

October 3, 1963 - Found 3/4" pinched iron pipe down 0.4'±. Updated ties to monument.

April 21, 1965 - Found 3/4" iron pipe and added additional ties due to road construction.

August 6, 1965 - Found 3/4" iron pipe and updated ties.

July 7, 1969 - Set cast iron monument down 0.4'± on top of found iron pipe. Updated ties.

August 26, 1970 - Set removable top cast iron monument flush. Updated ties.

July 23, 1973 - Found cast iron monument and updated ties.

July 26, 1976 - Found cast iron monument and updated ties.

July 12, 1979 - Found cast iron monument and updated ties.

August 2, 1982 - Found cast iron monument and updated ties.

June 26, 1985 - Found cast iron monument and updated ties.

August 26, 1988 - Found cast iron monument down and raised flush. Updated ties.

June 27, 1994 - Found cast iron monument and updated ties.

July 5, 1994 - Found cast iron monument and updated ties.

May 6, 1999 - Found cast iron monument and set construction ties prior to road construction. Removed monument. Set cast iron monument after construction and updated ties.

August 21, 2002 - Established NAD 1983 (1996 adj.) Anoka County project coordinates by static GPS methods.

October 1, 2002 - Found cast iron monument and updated ties.

April 22, 2013 - Found cast iron monument. Verified position by VRS GPS methods. Updated ties.

January 9, 2018 - Found cast iron monument flush. Verified position by VRS GPS methods. Updated ties.

July 8, 2020 - Reset cast iron monument flush after road construction using static GPS methods. Updated ties.