

CERTIFICATE OF LOCATION OF GOVERNMENT CORNER

County of Anoka

State of Minnesota

Witness Corner of Sec. 21 Township 33 Range 25

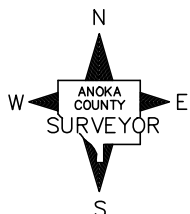
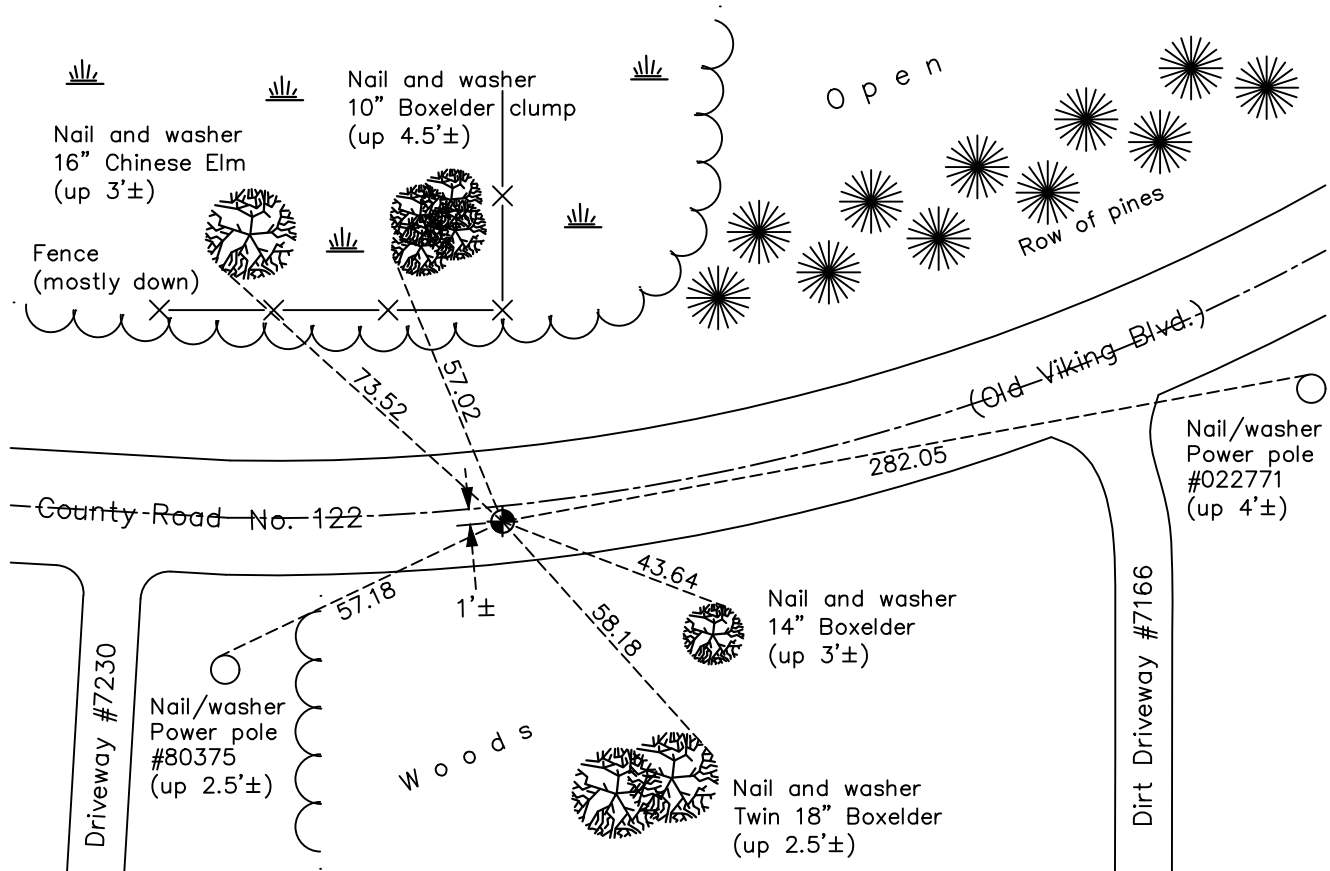
(On the east line of SE 1/4)

On the 24th day of April, 1985, the described corner was evidenced by area resurvey

and to perpetuate the location of said corner, at the exact location thereof, a permanent marker was placed consisting of a cast iron monument

AND on the 30th day of January, 2018, said permanent marker was found flush and the ties were updated

Updated reference ties are as shown below.



Revision Date

4/20/18

N.A.D. 1983 Coordinates
(1996 Adjustment)

County Project Coordinates	
Northing	<u>207620.4753</u>
Easting	<u>452885.2845</u>
Date	<u>9/25/02</u>

I hereby certify that this United States public land survey monument record is correct and complete to the best of my knowledge and belief.

David M. Ziegler Date 6/9/21

David M. Ziegler, Anoka County Surveyor

Minnesota License Number 46179

HISTORY OF GOVERNMENT CORNER

Page No. 74

County of Anoka

State of Minnesota

Witness Corner of Sec. 21 Township 33 Range 25
(On the east line of SE 1/4)

CORNER HISTORY:

May 19, 1975 - Set red and white iron pipe using area resurvey. Established ties to monument.

July 26, 1976 - Found red and white iron pipe and updated ties.

July 16, 1979 - Found red and white iron pipe in good condition.

August 2, 1982 - Found red and white iron pipe and updated ties.

Unknown date - Removed red and white iron pipe for new corner position on southerly high ground.

April 24, 1985 - Set cast iron monument flush using area resurvey. Established ties to monument.

July 8, 1994 - Found cast iron monument and updated ties.

September 25, 2002 - Established NAD 1983 (1996 adj.) Anoka County project coordinates by static GPS methods.

September 30, 2002 - Found cast iron monument and updated ties.

March 22, 2013 - Found cast iron monument. Verified position by VRS GPS methods. Updated ties.

January 30, 2018 - Found cast iron monument flush. Verified position by VRS GPS methods. Updated ties.