

CERTIFICATE OF LOCATION OF GOVERNMENT CORNER

County of Anoka

State of Minnesota

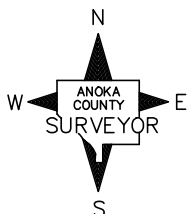
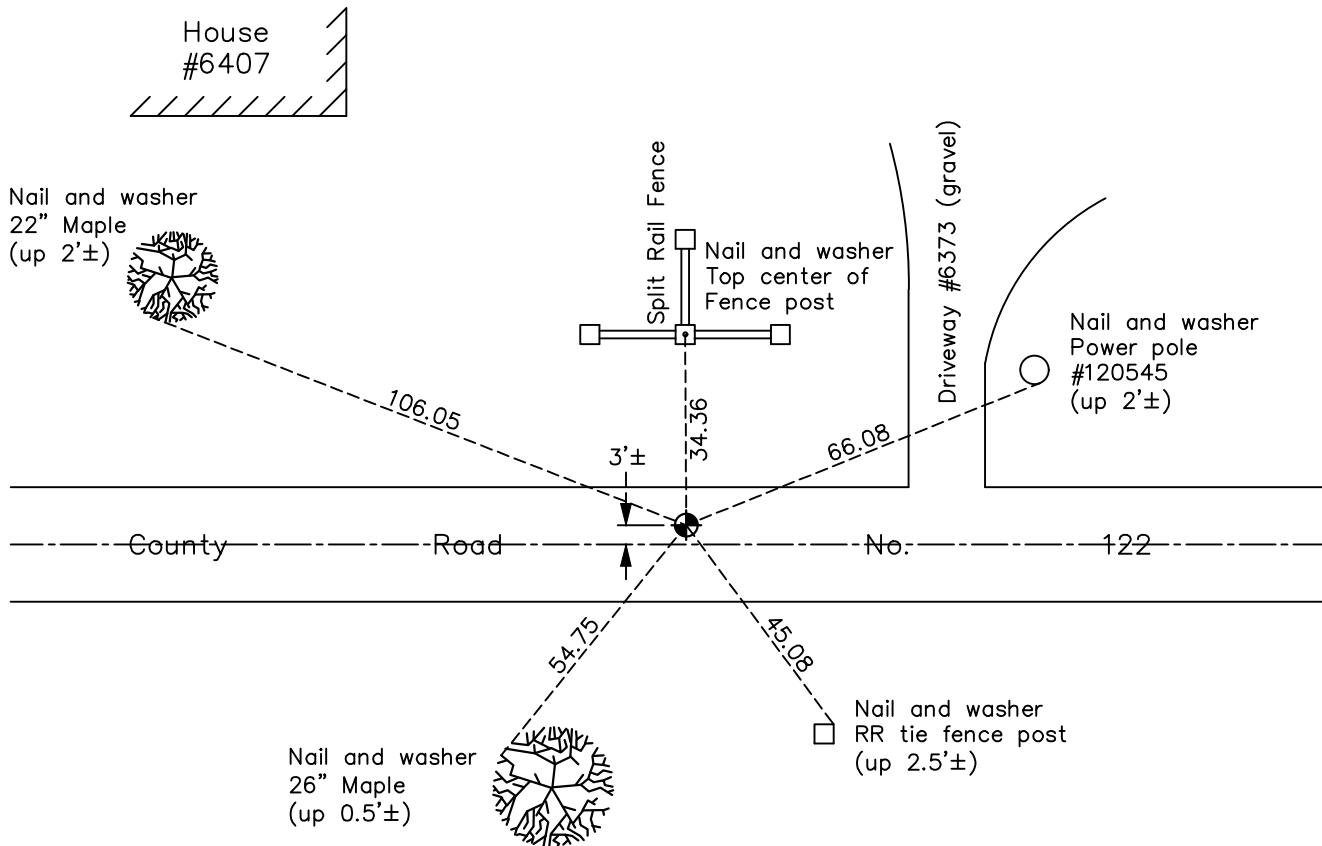
West 1/4 Corner of Sec. 23 Township 33 Range 25

On the 16th day of December, 1971, the described corner was evidenced by a P.K. nail set by N.C. Hoium

and to perpetuate the location of said corner, at the exact location thereof, a permanent marker was placed consisting of a cast iron monument

AND on the 6th day of March, 2018, said permanent marker was found flush and the ties were updated

Updated reference ties are as shown below.



Revision Date

4/20/18

N.A.D. 1983 Coordinates
(1996 Adjustment)

County Project Coordinates	
Northing	<u>209359.7524</u>
Easting	<u>458142.8609</u>
Date	<u>9/25/02</u>

I hereby certify that this United States public land survey monument record is correct and complete to the best of my knowledge and belief.

David M. Zieglsmeier Date 6/9/21

David M. Zieglsmeier, Anoka County Surveyor

Minnesota License Number 46179

HISTORY OF GOVERNMENT CORNER

Page No. 75

County of Anoka

State of Minnesota

West 1/4 Corner of Sec. 23 Township 33 Range 25

CORNER HISTORY:

May 1855 - This corner was established by James M. Marsh, Deputy Surveyor. Marsh marked the position by "set quarter section post" with two bearing trees marked as accessories.

December 16, 1971 - Found P.K. nail set by N.C. Hoium. Established ties to P.K. nail.

August 13, 1973 - Set cast iron monument and updated ties.

July 26, 1976 - Found cast iron monument and updated ties.

July 11, 1979 - Found cast iron monument and updated ties.

July 30, 1982 - Found cast iron monument and updated ties.

June 27, 1985 - Found cast iron monument and updated ties.

June 30, 1989 - Found cast iron monument and updated ties.

October 11, 1991 - Found cast iron monument down and raised flush. Updated ties.

September 25, 2002 - Established NAD 1983 (1996 adj.) Anoka County project coordinates by static GPS methods.

September 30, 2002 - Found cast iron monument and updated ties.

March 22, 2013 - Found cast iron monument. Verified position by VRS GPS methods. Updated ties.

March 6, 2018 - Found cast iron monument flush. Verified position by VRS GPS methods. Updated ties.