

CERTIFICATE OF LOCATION OF GOVERNMENT CORNER

County of Anoka

State of Minnesota

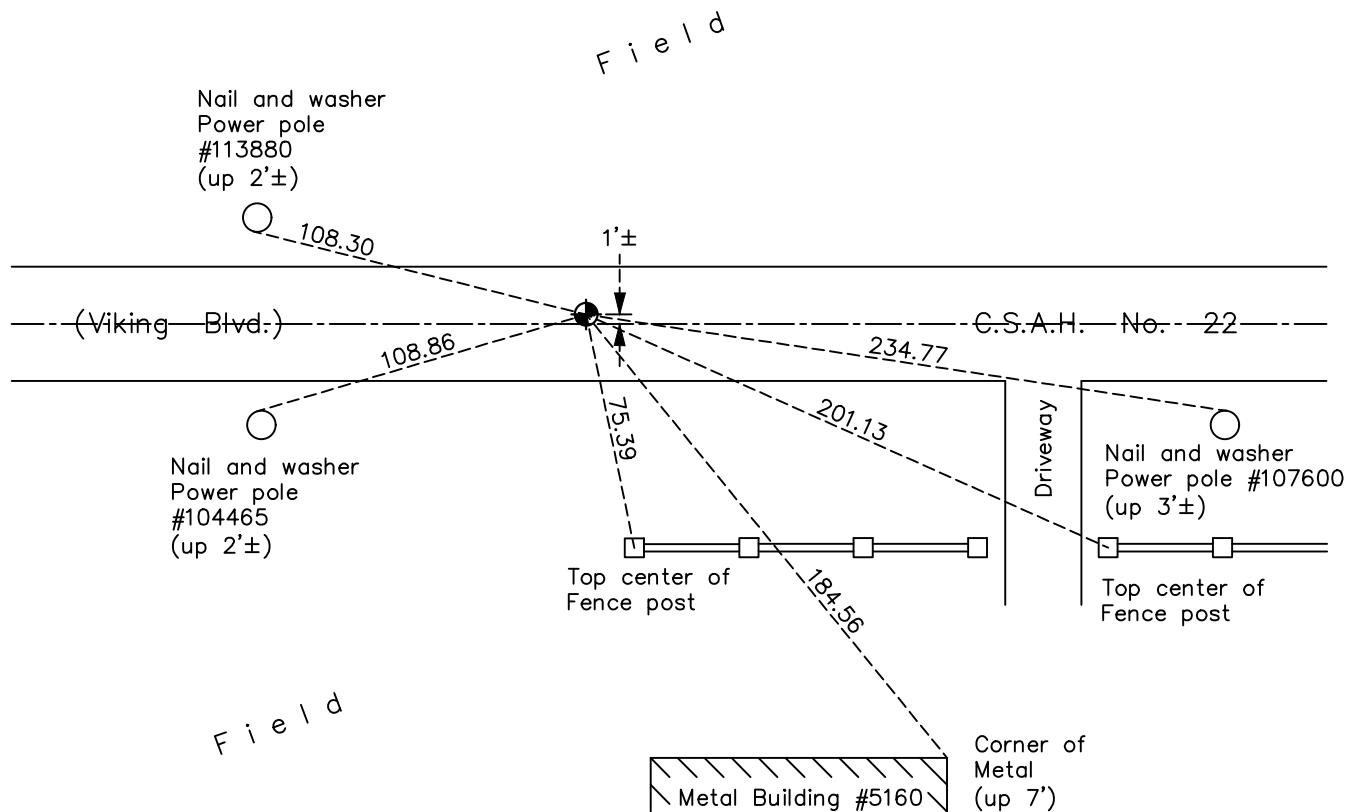
North $\frac{1}{4}$ Corner of Sec. 25 Township 33 Range 25

On the 6th day of August, 1965, the described corner was evidenced by a Cartwright concrete monument

and to perpetuate the location of said corner, at the exact location thereof, a permanent marker was placed consisting of a cast iron monument

AND on the 2nd day of February, 2018, said permanent marker was found flush and the ties were updated

Updated reference ties are as shown below.



Revision Date

4/20/18

N.A.D. 1983 Coordinates
(1996 Adjustment)

County Project Coordinates	
Northing	<u>206676.4864</u>
Easting	<u>466016.9682</u>
Date	<u>9/25/02</u>

I hereby certify that this United States public land survey monument record is correct and complete to the best of my knowledge and belief.

David M Zieglmeier Date 6/9/21

David M. Zieglmeier, Anoka County Surveyor

Minnesota License Number 46179

HISTORY OF GOVERNMENT CORNER

Page No. 78

County of Anoka

State of Minnesota

North 1/4 Corner of Sec. 25 Township 33 Range 25

CORNER HISTORY:

May 1855 - This corner was established by James M. Marsh, Deputy Surveyor. Marsh marked the position by "set quarter section post" with one bearing tree marked as an accessory.

August 13, 1945 - Harvey Cartwright set a concrete monument using online and midway between section corners. Established ties to monument.

August 6, 1965 - Replaced concrete monument with cast iron monument down 0.4'±. Updated ties.

July 11, 1969 - Found cast iron monument and updated ties.

June 19, 1972 - Found cast iron monument down 2'± prior to road construction. Updated ties.

July 26, 1973 - Found cast iron monument and updated ties.

September 14, 1973 - Set cast iron monument flush after road construction. Updated ties.

July 26, 1976 - Found cast iron monument and updated ties.

September 26, 1978 - Found cast iron monument and updated ties.

August 2, 1982 - Found cast iron monument and updated ties.

June 27, 1985 - Found cast iron monument and updated ties.

August 29, 1988 - Found cast iron monument and updated ties.

June 7, 1994 - Found cast iron monument and updated ties.

September 25, 2002 - Established NAD 1983 (1996 adj.) Anoka County project coordinates by static GPS methods.

October 1, 2002 - Found cast iron monument and updated ties.

May 24, 2005 - Found cast iron monument, set construction ties and updated corner ties prior to construction. Removed monument.

September 7, 2005 - Set cast iron monument after construction using static GPS methods. Updated ties.

July 31, 2013 - Found cast iron monument. Verified position by VRS GPS methods. Updated ties.

February 2, 2018 - Found cast iron monument flush. Verified position by VRS GPS methods. Updated ties.