

CERTIFICATE OF LOCATION OF GOVERNMENT CORNER

County of Anoka

State of Minnesota

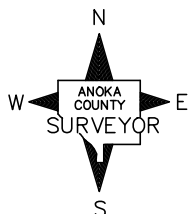
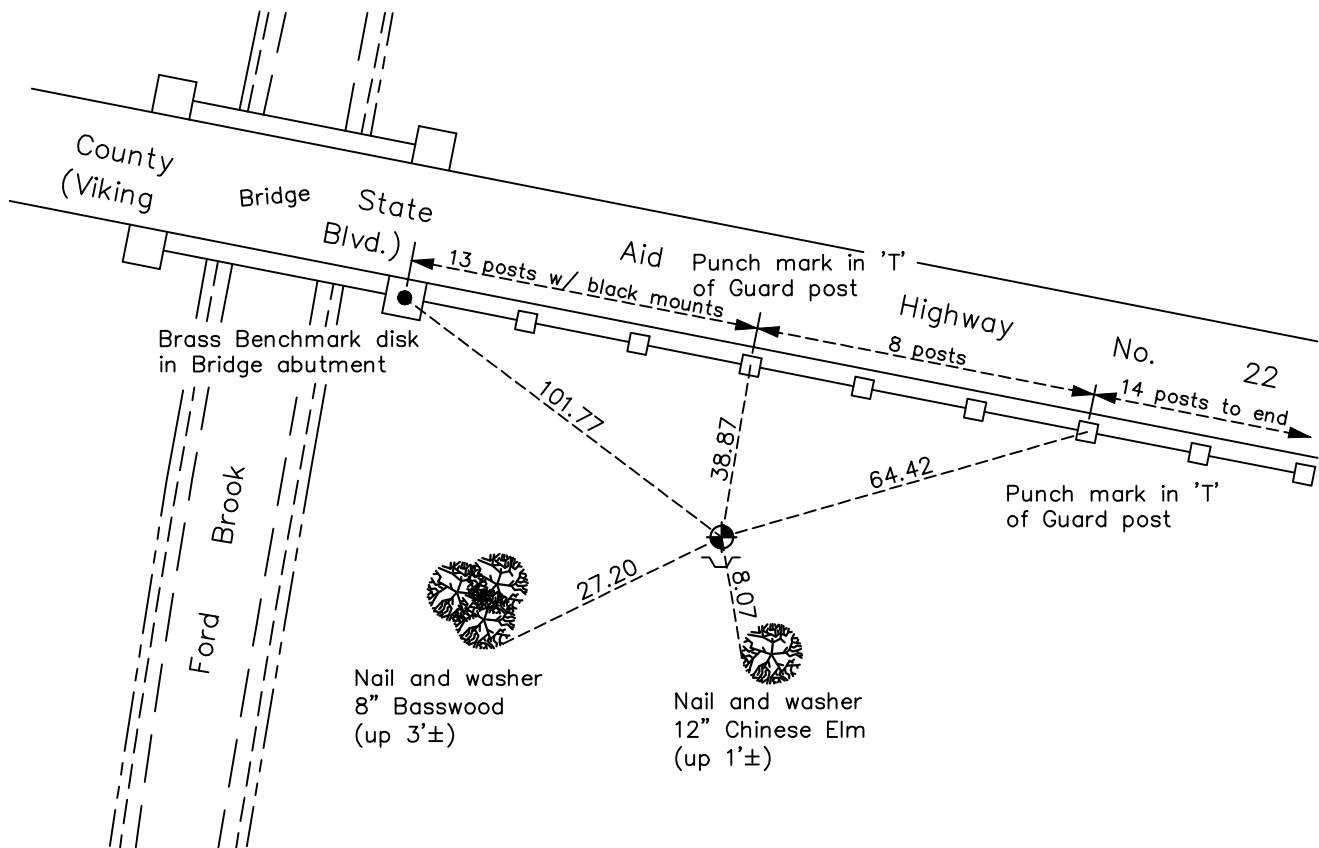
Southeast Corner of Sec. 23 Township 33 Range 25

On the 2nd day of October, 1963, the described corner was evidenced by a 6"X6" granite monument

and to perpetuate the location of said corner, at the exact location thereof, a permanent marker was placed consisting of a cast iron monument with a sign and post on the south side

AND on the 2nd day of February, 2018, said permanent marker was found down 1.5'± and the ties were updated

Updated reference ties are as shown below.



Revision Date

4/20/18

N.A.D. 1983 Coordinates
(1996 Adjustment)

County Project Coordinates

Northing 206700.3146

Easting 463390.6178

Date 9/26/02

I hereby certify that this United States public land survey monument record is correct and complete to the best of my knowledge and belief.

David M Zieglmeier Date 6/9/21

David M. Zieglmeier, Anoka County Surveyor

Minnesota License Number 46179

HISTORY OF GOVERNMENT CORNER

Page No. 79

County of Anoka

State of Minnesota

Southeast Corner of Sec. 23 Township 33 Range 25

CORNER HISTORY:

May 1855 - This corner was established by James M. Marsh, Deputy Surveyor. Marsh marked the position by "set post corner of sections 23, 24, 25 and 26" with two bearing trees marked as accessories.

August 11, 1945 - Harvey Cartwright found a granite monument and updated the ties.

October 2, 1963 - Found 6" x 6" granite monument flush under east-west fence line. Updated ties.

August 6, 1965 - Found granite monument and updated ties.

July 23, 1969 - Found granite monument and updated ties.

July 26, 1973 - Found granite monument and updated ties.

July 26, 1976 - Found granite monument and updated ties.

July 20, 1979 - Found granite monument and updated ties.

August 6, 1982 - Found granite monument and updated ties.

July 1, 1985 - Found granite monument and updated ties.

August 19, 1987 - Found granite monument and set construction ties prior to construction. Granite left in place.

April 13, 1988 - Granite monument gone due to construction. Set cast iron monument down 1"±. Updated ties.

June 7, 1994 - Found cast iron monument w/sign and post on the south side. Updated ties.

September 26, 2002 - Established NAD 1983 (1996 adj.) Anoka County project coordinates by static GPS methods.

October 10, 2002 - Found cast iron monument and updated ties.

May 27, 2011 - Found cast iron monument and updated ties.

March 28, 2013 - Found cast iron monument down 0.9'±. Verified position by VRS GPS methods. Updated ties.

February 2, 2018 - Found cast iron monument down 1.5'±. Verified position by VRS GPS methods. Updated ties.