

CERTIFICATE OF LOCATION OF GOVERNMENT CORNER

County of Anoka

State of Minnesota

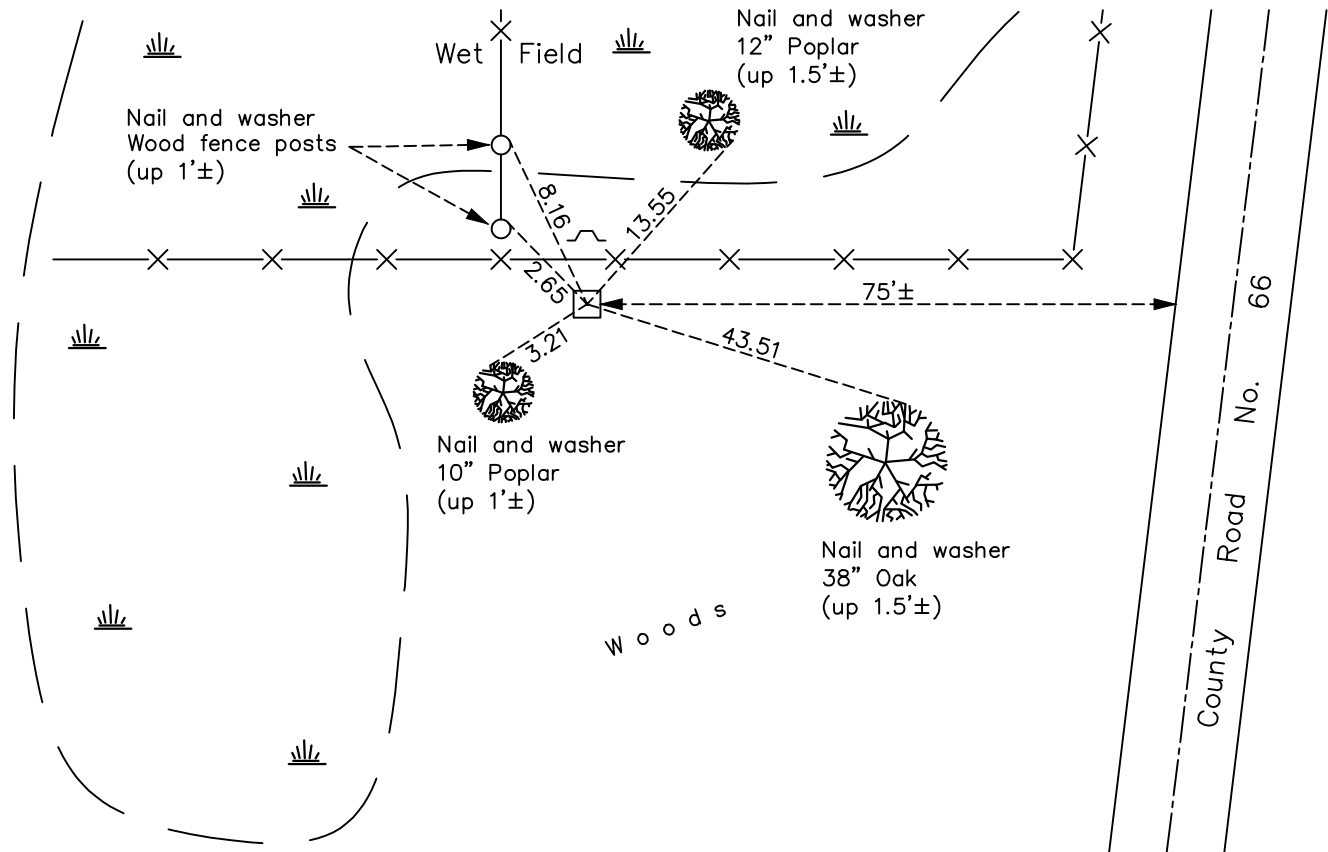
South 1/4 Corner of Sec. 23 Township 33 Range 25

On the 22nd day of July, 1969, the described corner was evidenced by a granite monument

and to perpetuate the location of said corner, at the exact location thereof, a permanent marker was placed consisting of the same granite monument with a sign and post on the north side

AND on the 30th day of January, 2018, said permanent marker was found up 0.2'± and the ties were updated

Updated reference ties are as shown below.



Revision Date

4/20/18

N.A.D. 1983 Coordinates
(1996 Adjustment)

County Project Coordinates

Northing 206725.7022

Easting 460772.0241

Date 10/01/02

I hereby certify that this United States public land survey monument record is correct and complete to the best of my knowledge and belief.

David M. Zieglmeier Date 6/9/21

David M. Zieglmeier, Anoka County Surveyor

Minnesota License Number 46179

HISTORY OF GOVERNMENT CORNER

Page No. 80

County of Anoka

State of Minnesota

South 1/4 Corner of Sec. 23 Township 33 Range 25

CORNER HISTORY:

May 1855 - This corner was established by James M. Marsh, Deputy Surveyor. Marsh marked the position by "set quarter section post" with one bearing tree marked as an accessory.

July 22, 1969 - Found granite monument up 0.3'± under new fence line. Updated ties.

July 24, 1973 - Found granite monument and updated ties.

July 26, 1976 - Found granite monument and updated ties.

July 12, 1979 - Found granite monument and updated ties.

August 3, 1982 - Found granite monument and updated ties.

August 30, 1988 - Found granite monument and updated ties.

June 7, 1994 - Found granite monument w/sign and post on the north side. Updated ties.

October 1, 2002 - Found granite monument and updated ties. Established NAD 1983 (1996 adj.) Anoka County project coordinates by static GPS methods.

March 20, 2013 - Found granite monument and updated ties.

January 30, 2018 - Found granite monument up 0.2'± and updated ties.