

CERTIFICATE OF LOCATION OF GOVERNMENT CORNER

County of Anoka

State of Minnesota

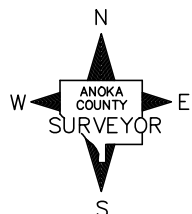
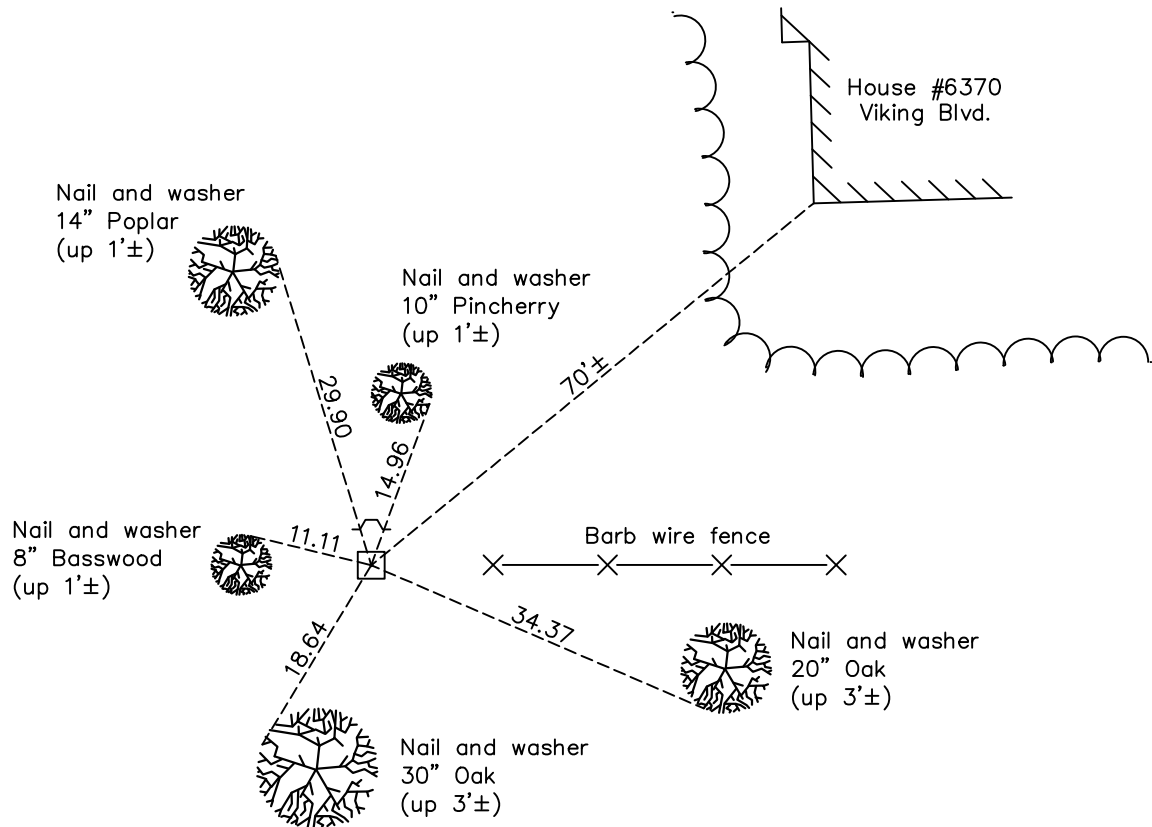
Southeast Corner of Sec. 22 Township 33 Range 25

On the 29th day of July, 1964, the described corner was evidenced by a granite monument

and to perpetuate the location of said corner, at the exact location thereof, a permanent marker was placed consisting of the same granite monument with a sign and post on the north side

AND on the 2nd day of February, 2018, said permanent marker was found flush and the ties were updated

Updated reference ties are as shown below.



Revision Date

4/20/18

N.A.D. 1983 Coordinates
(1996 Adjustment)

County Project Coordinates	
Northing	<u>206753.4058</u>
Easting	<u>458152.7994</u>
Date	<u>2/18/03</u>

I hereby certify that this United States public land survey monument record is correct and complete to the best of my knowledge and belief.

David M Zieglmeier Date 6/9/21

David M. Zieglmeier, Anoka County Surveyor

Minnesota License Number 46179

HISTORY OF GOVERNMENT CORNER

Page No. 81

County of Anoka

State of Minnesota

Southeast Corner of Sec. 22 Township 33 Range 25

CORNER HISTORY:

May 1855 - This corner was established by James M. Marsh, Deputy Surveyor. Marsh marked the position by "set post corner of sections 22, 23, 26 and 27" with two bearing trees marked as accessories.

July 29, 1964 - Found 6" x 6" granite monument up 0.2'± and set to Cardinal points. Updated ties.

July 24, 1969 - Found granite monument up 0.1'± and updated ties.

August 10, 1973 - Found granite monument and updated ties.

July 20, 1979 - Found granite monument and updated ties.

August 9, 1982 - Found granite monument and updated ties.

August 30, 1988 - Found granite monument w/sign and post on the north side. Updated ties.

June 7, 1994 - Found granite monument w/sign and post on the north side. Updated ties.

February 18, 2003 - Established NAD 1983 (1996 adj.) Anoka County project coordinates by static GPS methods.

March 27, 2013 - Found granite monument and updated ties.

February 2, 2018 - Found granite monument flush and updated ties.