

CERTIFICATE OF LOCATION OF GOVERNMENT CORNER

County of Anoka

State of Minnesota

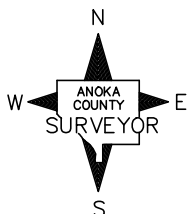
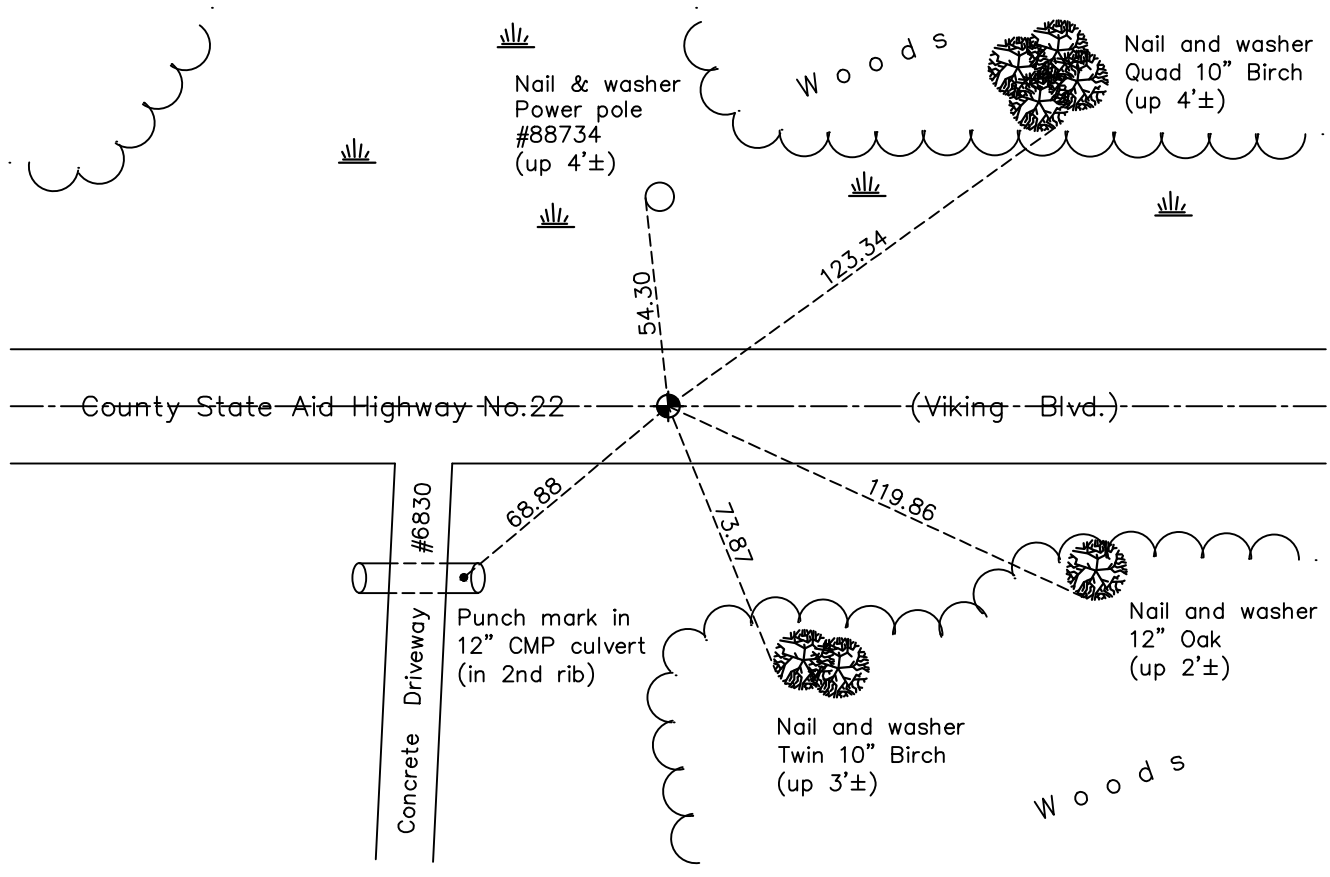
North $\frac{1}{4}$ Corner of Sec. 27 Township 33 Range 25

On the 15th day of June, 1966, the described corner was evidenced by area resurvey

and to perpetuate the location of said corner, at the exact location thereof, a permanent marker was placed consisting of a cast iron monument and replaced with a Slimline cast iron monument on August 12, 2011

AND on the 2nd day of February, 2018, said permanent marker was found and the ties were updated

Updated reference ties are as shown below.



Revision Date

4/20/18

N.A.D. 1983 Coordinates
(1996 Adjustment)

County Project Coordinates	
Northing	<u>206750.1837</u>
Easting	<u>455511.9402</u>
Date	<u>9/03/02</u>

I hereby certify that this United States public land survey monument record is correct and complete to the best of my knowledge and belief.

David M Zieglmeier Date 6/9/21

David M. Zieglmeier, Anoka County Surveyor

Minnesota License Number 46179

HISTORY OF GOVERNMENT CORNER

Page No. 82

County of Anoka

State of Minnesota

North 1/4 Corner of Sec. 27 Township 33 Range 25

CORNER HISTORY:

May 1855 - This corner was established by James M. Marsh, Deputy Surveyor. Marsh marked the position by "set quarter section post" with two bearing trees marked as accessories.

June 15, 1966 - Set cast iron monument flush using area resurvey. Established ties to monument.

July 18, 1969 - Found cast iron monument and updated ties.

July 31, 1973 - Found cast iron monument and updated ties.

July 27, 1976 - Found cast iron monument and updated ties.

July 20, 1979 - Found cast iron monument and updated ties.

August 9, 1982 - Found cast iron monument and updated ties.

August 20, 1987 - Found cast iron monument. Set construction ties prior to construction. Removed monument.

August 30, 1988 - Set cast iron monument after construction. Updated ties.

June 7, 1994 - Found cast iron monument and updated ties.

September 3, 2002 - Established NAD 1983 (1996 adj.) Anoka County project coordinates by static GPS methods.

May 27, 2011 - Found cast iron monument and updated ties prior to road construction. Removed monument.

August 12, 2011 - Set slimline cast iron monument in concrete road after construction using static GPS methods. Updated ties.

March 27, 2013 - Found cast iron monument. Verified position by VRS GPS methods. Updated ties.

February 2, 2018 - Found cast iron monument. Verified position by VRS GPS methods. Updated ties.