

CERTIFICATE OF LOCATION OF GOVERNMENT CORNER

County of Anoka

State of Minnesota

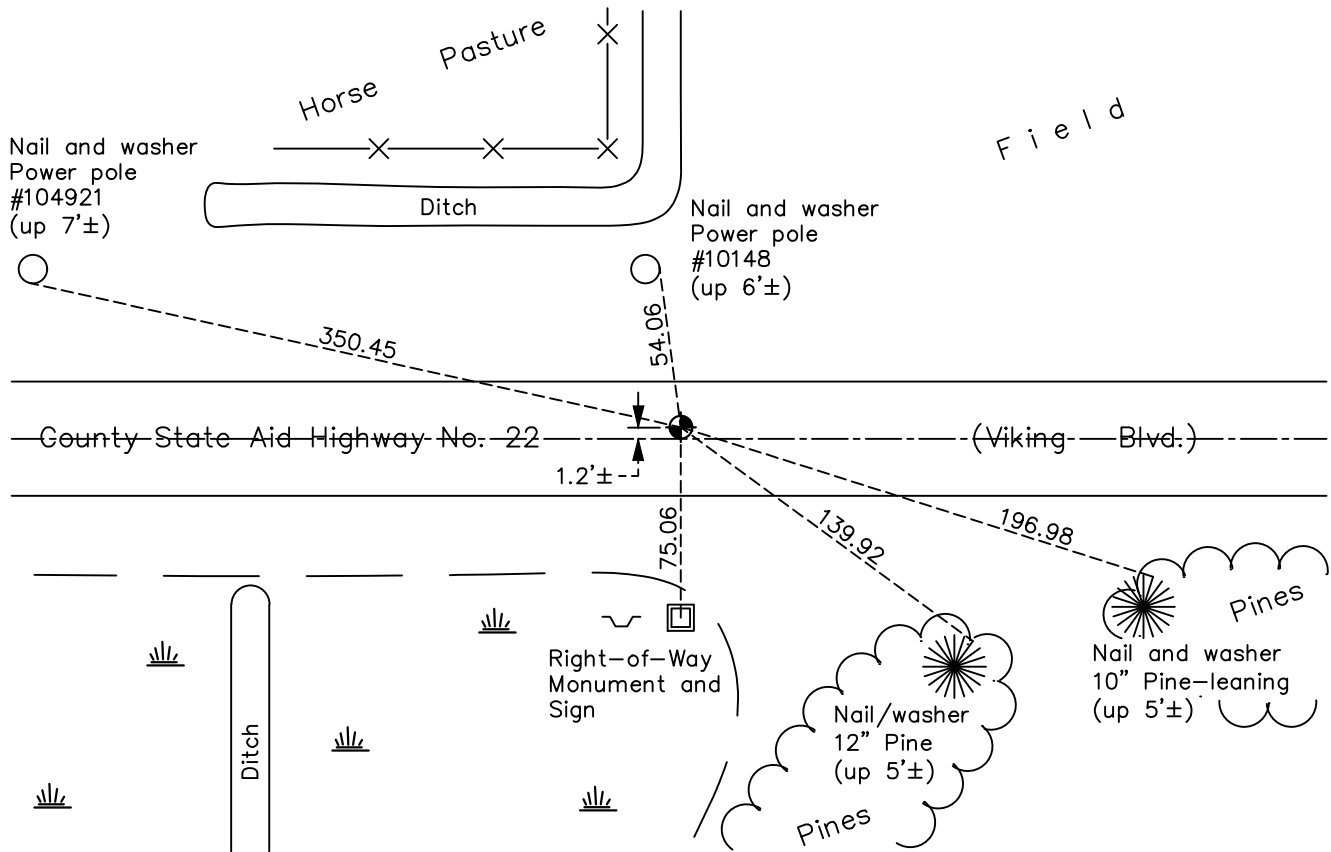
North $\frac{1}{4}$ Corner of Sec. 28 Township 33 Range 25

On the 19th day of May, 1976, the described corner was evidenced by area resurvey

and to perpetuate the location of said corner, at the exact location thereof, a permanent marker was placed consisting of a cast iron monument and replaced with a Slimline cast iron monument on August 12, 2011

AND on the 7th day of March, 2018, said permanent marker was found and the ties were updated

Updated reference ties are as shown below.



N

W ANOKA COUNTY SURVEYOR E

S

Revision Date

4/23/18

N.A.D. 1983 Coordinates
(1996 Adjustment)

County Project Coordinates	
Northing	206794.7660
Easting	450253.6157
Date	9/03/02

I hereby certify that this United States public land survey monument record is correct and complete to the best of my knowledge and belief.

David M. Zieglermeier Date 6/9/21

David M. Zieglermeier, Anoka County Surveyor

Minnesota License Number 46179

HISTORY OF GOVERNMENT CORNER

Page No. 84

County of Anoka

State of Minnesota

North 1/4 Corner of Sec. 28 Township 33 Range 25

CORNER HISTORY:

May 1855 - This corner was established by James M. Marsh, Deputy Surveyor. Marsh marked the position by "set quarter section post" with one bearing tree marked as an accessory.

July 20, 1971 - Set cast iron monument using area resurvey. Established ties to monument. Set sign and post on north side of monument.

August 9, 1973 - Found cast iron monument and updated ties.

May 19, 1976 - Set red and white iron pipe up 3'± in new corner location using area resurvey. Monument falls at intersection of centerline of ditches. Established ties to iron pipe.

July 27, 1976 - Found red and white iron pipe and updated ties.

July 16, 1979 - Found red and white iron pipe and updated ties.

July 30, 1982 - Found red and white iron pipe and updated ties.

June 28, 1985 - Found red and white iron pipe and updated ties.

August 20, 1987 - Found red and white iron pipe. Set construction ties prior to construction. Removed iron pipe.

August 30, 1988 - Set cast iron monument after construction and updated ties.

June 8, 1994 - Found cast iron monument and updated ties.

September 30, 2002 - Found cast iron monument and updated ties. Established NAD 1983 (1996 adj.) Anoka County project coordinates by static GPS methods.

May 27, 2011 - Found cast iron monument and updated ties prior to road construction. Removed monument.

August 12, 2011 - Set Slimline cast iron monument in concrete road after construction using static GPS methods. Updated ties.

March 27, 2013 - Found cast iron monument. Verified position by VRS GPS methods. Updated ties.

March 7, 2018 - Found cast iron monument. Verified position by VRS GPS methods. Updated ties.