

CERTIFICATE OF LOCATION OF GOVERNMENT CORNER

County of Anoka

State of Minnesota

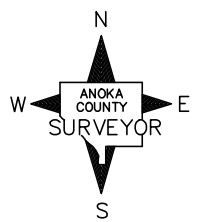
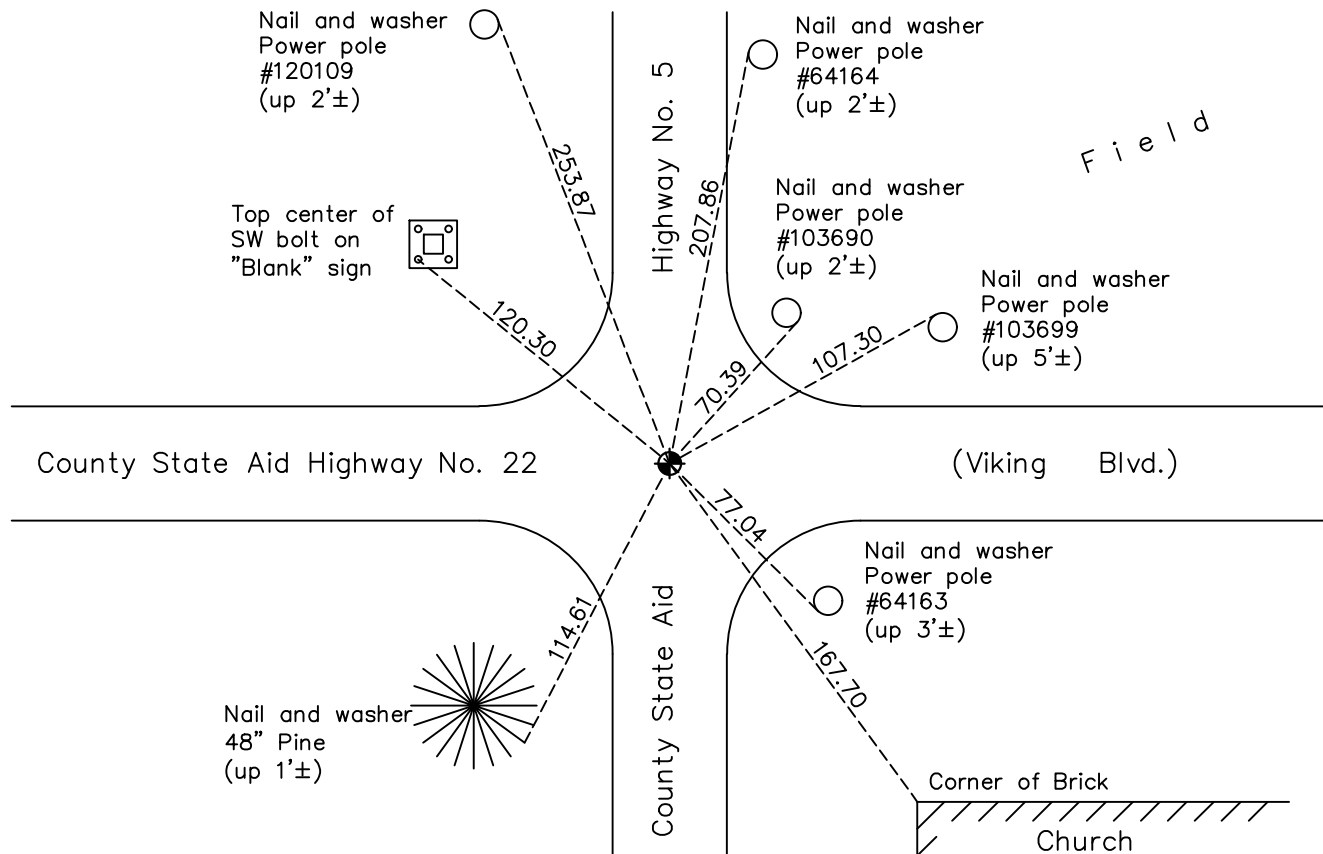
Northwest Corner of Sec. 28 Township 33 Range 25

On the 29th day of July, 1964, the described corner was evidenced by a 1/2" iron pipe

and to perpetuate the location of said corner, at the exact location thereof, a permanent marker was placed consisting of a slimline cast iron monument

AND on the 7th day of March, 2018, said permanent marker was found and the ties were updated

Updated reference ties are as shown below.



N.A.D. 1983 Coordinates
(1996 Adjustment)

County Project Coordinates	
Northing	<u>206788.5067</u>
Easting	<u>447634.8110</u>
Date	<u>9/23/02</u>

Revision Date
4/23/18

I hereby certify that this United States public land survey monument record is correct and complete to the best of my knowledge and belief.

David M Zieglmeier Date 6/9/21

David M. Zieglmeier, Anoka County Surveyor
Minnesota License Number 46179

HISTORY OF GOVERNMENT CORNER

Page No. 85

County of Anoka

State of Minnesota

Northwest Corner of Sec. 28 Township 33 Range 25

CORNER HISTORY:

May 1855 - This corner was established by James M. Marsh, Deputy Surveyor. Marsh marked the position by "set post corner of sections 20, 21, 28 and 29" with two bearing trees marked as accessories.

July 29, 1964 - Found 1/2" iron pipe flush and updated ties.

August 6, 1965 - Found 1/2" iron pipe and updated ties.

July 2, 1969 - Found 1/2" iron pipe and updated ties.

July 14, 1969 - Replaced iron pipe with cast iron monument flush and updated ties.

October 23, 1974 - Replaced cast iron monument and updated ties.

July 27, 1976 - Found cast iron monument and updated ties.

May 26, 1977 - Reset cast iron monument flush and updated ties.

July 19, 1979 - Found cast iron monument and updated ties.

July 30, 1982 - Found cast iron monument and updated ties.

June 26, 1985 - Found cast iron monument and updated ties.

August 24, 1988 - Found cast iron monument and updated ties.

June 8, 1994 - Found cast iron monument and updated ties.

July 30, 2002 - Found cast iron monument. Set construction ties and updated corner ties prior to road construction. Removed monument (unclear reset date).

September 23, 2002 - Established NAD 1983 (1996 adj.) Anoka County project coordinates by static GPS methods.

March 27, 2013 - Found cast iron monument. Verified position by VRS GPS methods. Updated ties.

April 22, 2013 - Found cast iron monument. Set construction ties prior to construction. Removed monument.

October 3, 2013 - Set Slimline cast iron monument in concrete road after construction. Updated ties.

March 7, 2018 - Found Slimline cast iron monument. Verified position by VRS GPS methods. Updated ties.