

# CERTIFICATE OF LOCATION OF GOVERNMENT CORNER

County of Anoka

State of Minnesota

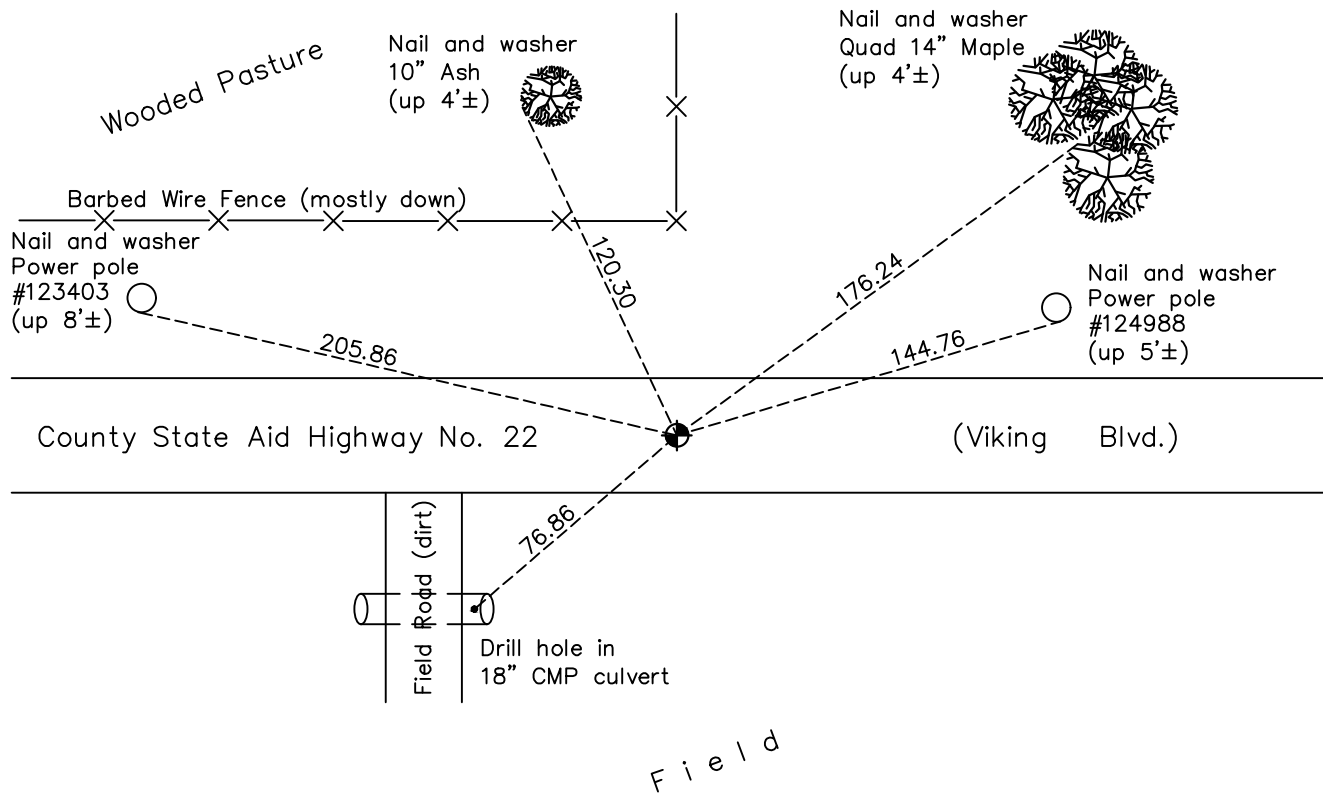
## North 1/4 Corner of Sec. 29 Township 33 Range 25

On the 8th day of July, 1969, the described corner was evidenced by a P.K. nail

and to perpetuate the location of said corner, at the exact location thereof, a permanent marker was placed consisting of a slimline cast iron monument

AND on the 7th day of March, 2018, said permanent marker was found in the center seam of concrete road and the ties were updated

Updated reference ties are as shown below.



N  
W ANOKA COUNTY SURVEYOR E  
S

Revision Date  
4/23/18

N.A.D. 1983 Coordinates  
(1996 Adjustment)

County Project Coordinates	
Northing	206837.3974
Easting	445021.6404
Date	9/25/02

I hereby certify that this United States public land survey monument record is correct and complete to the best of my knowledge and belief.

*David M Zieglmeier* Date 6/9/21

David M. Zieglmeier, Anoka County Surveyor  
Minnesota License Number 46179

# HISTORY OF GOVERNMENT CORNER

Page No. 86

County of Anoka

State of Minnesota

## North 1/4 Corner of Sec. 29 Township 33 Range 25

### **CORNER HISTORY:**

May 1855 - This corner was established by James M. Marsh, Deputy Surveyor. Marsh marked the position by "set quarter section post" with two bearing trees marked as accessories.

July 8, 1969 - Found P.K. nail on centerline of highway and updated ties. Set P.K. nails 2' north and east.

July 24, 1973 - Found P.K. nail and updated ties.

May 3, 1974 - Replaced P.K. nail with a cast iron monument flush. Updated ties.

July 27, 1976 - Found cast iron monument and updated ties.

July 13 1979 - Found cast iron monument and updated ties.

July 30, 1982 - Found cast iron monument and updated ties.

June 26, 1985 - Found cast iron monument and updated ties.

August 24, 1988 - Found cast iron monument and updated ties.

May 22, 1992 - Found cast iron monument down and raised flush. Updated ties.

June 8, 1994 - Found cast iron monument and updated ties.

September 25, 2002 - Established NAD 1983 (1996 adj.) Anoka County project coordinates by static GPS methods.

September 30, 2002 - Found cast iron monument and updated ties.

March 27, 2013 - Found cast iron monument. Verified position by VRS GPS methods. Updated ties.

April 22, 2013 - Found cast iron monument and set construction ties prior to construction. Removed monument.

October 3, 2013 - Set Slimline cast iron monument in concrete road after construction. Updated ties.

March 7, 2018 - Found Slimline cast iron monument. Verified position by VRS GPS methods. Updated ties.