

CERTIFICATE OF LOCATION OF GOVERNMENT CORNER

County of Anoka

State of Minnesota

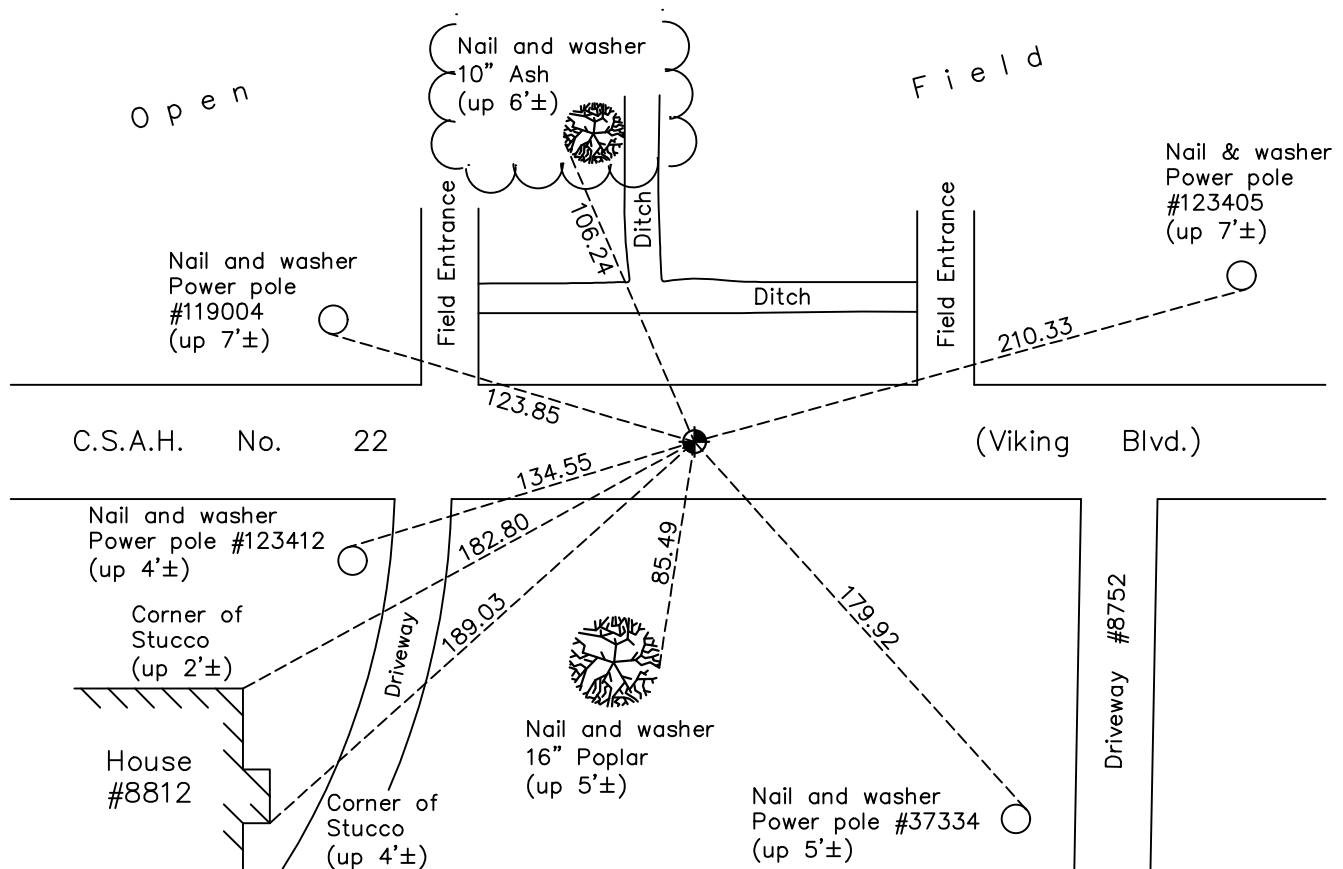
Southeast Corner of Sec. 19 Township 33 Range 25

On the 20th day of October, 1958, the described corner was evidenced by a 1" iron pipe

and to perpetuate the location of said corner, at the exact location thereof, a permanent marker was placed consisting of a slimline cast iron monument set in concrete

AND on the 8th day of March, 2018, said permanent marker was found and the ties were updated

Updated reference ties are as shown below.



Revision Date

4/23/18

N.A.D. 1983 Coordinates
(1996 Adjustment)

County Project Coordinates	
Northing	<u>206884.5637</u>
Easting	<u>442420.4220</u>
Date	<u>9/26/02</u>

I hereby certify that this United States public land survey monument record is correct and complete to the best of my knowledge and belief.

David M Zieglmeier Date 6/9/21

David M. Zieglmeier, Anoka County Surveyor

Minnesota License Number 46179

HISTORY OF GOVERNMENT CORNER

Page No. 87

County of Anoka

State of Minnesota

Southeast Corner of Sec. 19 Township 33 Range 25

CORNER HISTORY:

May 1855 - This corner was established by James M. Marsh, Deputy Surveyor. Marsh marked the position by "set post corner of sections 19, 20, 29 and 30" with two bearing trees marked as accessories.

November 9, 1946 - Harvey Cartwright set a concrete monument using proportion according to surveyors records, which work out very well. Established ties to concrete monument.

October 20, 1958 - Casewell set a 1" x 3' iron pipe down 0.4'±. Established ties to iron pipe.

July 2, 1969 - Found 1" iron pipe and updated ties.

August 13, 1973 - Replaced 1" iron pipe with a removable top cast iron monument flush. Updated ties.

July 27, 1976 - Found cast iron monument and updated ties.

July 13, 1979 - Found cast iron monument and updated ties.

July 30, 1982 - Found cast iron monument and updated ties.

June 28, 1985 - Found cast iron monument and updated ties.

August 24, 1988 - Found cast iron monument and updated ties.

May 26, 1992 - Found cast iron monument down and raised flush. Updated ties.

June 8, 1994 - Found cast iron monument and updated ties.

September 26, 2002 - Established NAD 1983 (1996 adj.) Anoka County project coordinates by static GPS methods.

September 30, 2002 - Found cast iron monument and updated ties.

August 27, 2003 - Found cast iron monument and updated ties.

March 27, 2013 - Found cast iron monument down 0.1'±. Verified position by VRS GPS methods. Updated ties.

April 22, 2013 - Found cast iron monument. Set construction ties prior to construction. Removed monument.

October 1, 2013 - Set Slimline cast iron monument in concrete road after construction. Verified position by VRS GPS methods. Updated ties.

March 8, 2018 - Found Slimline cast iron monument. Verified position by VRS GPS methods. Updated ties.