

CERTIFICATE OF LOCATION OF GOVERNMENT CORNER

County of Anoka

State of Minnesota

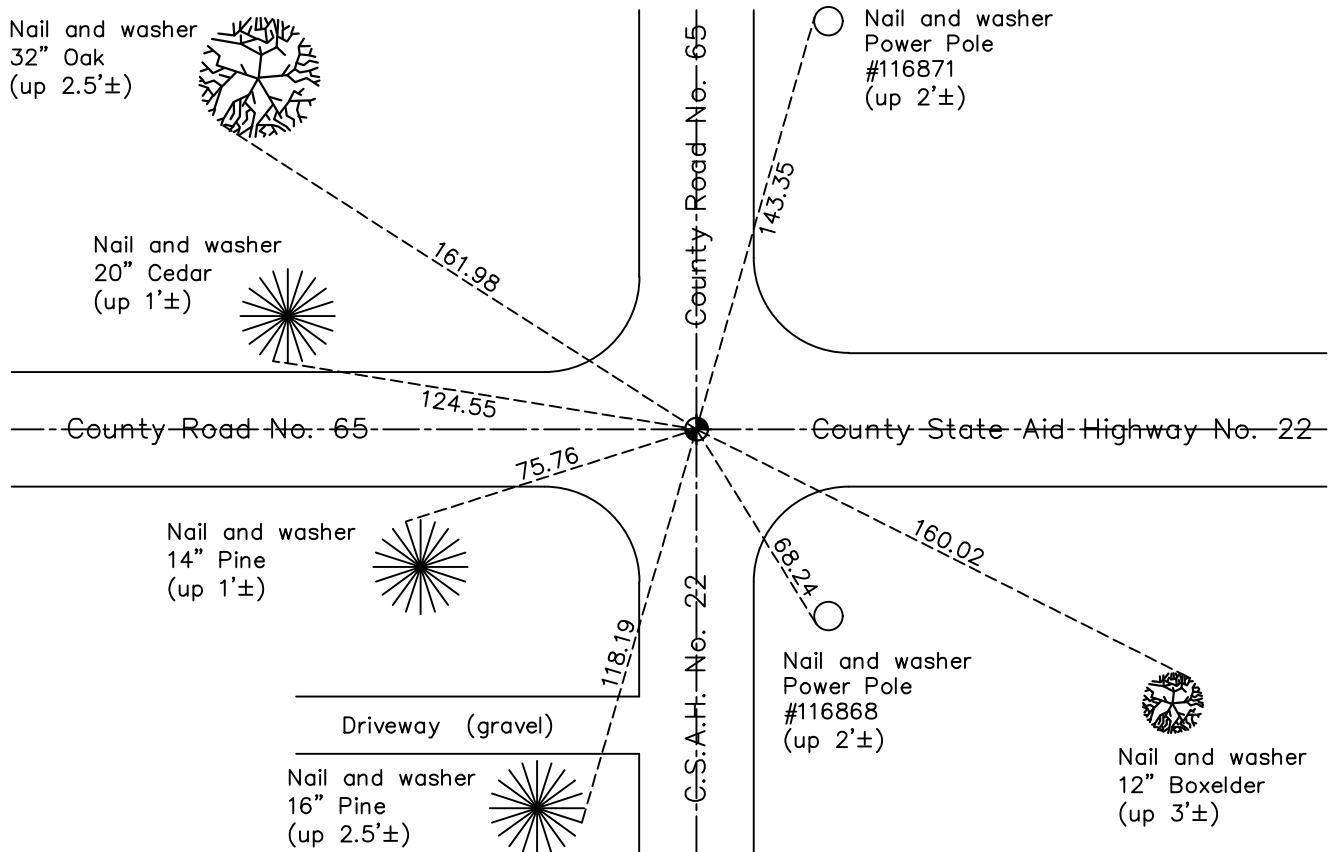
South 1/4 Corner of Sec. 19 Township 33 Range 25

On the ____ day of June, 1960, the described corner was evidenced by a 2" Iron pipe

and to perpetuate the location of said corner, at the exact location thereof, a permanent marker was placed consisting of a cast iron monument

AND on the 8th day of July, 2020, said permanent marker was reset with a CIM flush after road construction using static GPS methods. The ties were updated.

Updated reference ties are as shown below.



Revision Date

7/14/20

N.A.D. 1983 Coordinates
(1996 Adjustment)

County Project Coordinates	
Northing	206922.3812
Easting	439805.8960
Date	9/03/02

I hereby certify that this United States public land survey monument record is correct and complete to the best of my knowledge and belief.

David M. Ziegler Date 6/9/21

David M. Ziegler, Anoka County Surveyor

Minnesota License Number 46179

HISTORY OF GOVERNMENT CORNER

Page No. 88

County of Anoka

State of Minnesota

South 1/4 Corner of Sec. 19 Township 33 Range 25

CORNER HISTORY:

May 1855 - This corner was established by James M. Marsh, Deputy Surveyor. Marsh marked the position by "set quarter section post" with one bearing tree marked as an accessory.

November 8, 1946 - Harvey Cartwright set a concrete monument using an old tie to corner of church. Established ties to concrete monument.

October 20, 1958 - Casewell found 2" iron down 0.5'± and updated ties.

June 1960 - Bill Rogers found 2" iron down 0.5'± and updated ties.

August 5, 1965 - Found 2' iron missing. Set cast iron monument using corner ties. Updated ties.

July 2, 1969 - Found cast iron monument flush and updated ties.

July 24, 1973 - Found cast iron monument and updated ties.

July 27, 1976 - Found cast iron monument and updated ties.

July 1979 - Found cast iron monument and updated ties.

July 30, 1982 - Found cast iron monument and updated ties.

June 26, 1985 - Found cast iron monument and updated ties.

August 24, 1988 - Found cast iron monument and updated ties.

June 8, 1994 - Found cast iron monument and updated ties.

September 3, 2002 - Established NAD 1983 (1996 adj.) Anoka County project coordinates by static GPS methods.

October 1, 2002 - Found cast iron monument and updated ties.

2013 - Found cast iron monument, verified position by VRS GPS methods, set construction ties and updated corner ties prior to construction.

October 3, 2013 - Set cast iron monument after road construction using static GPS methods. Updated ties.

March 8, 2018 - Found cast iron monument. Verified position by VRS GPS methods. Updated ties.

July 8, 2020 - Reset cast iron monument flush after road construction using static GPS methods. Updated ties.