

CERTIFICATE OF LOCATION OF GOVERNMENT CORNER

County of Anoka

State of Minnesota

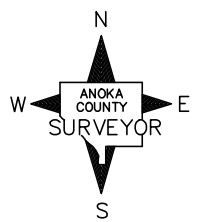
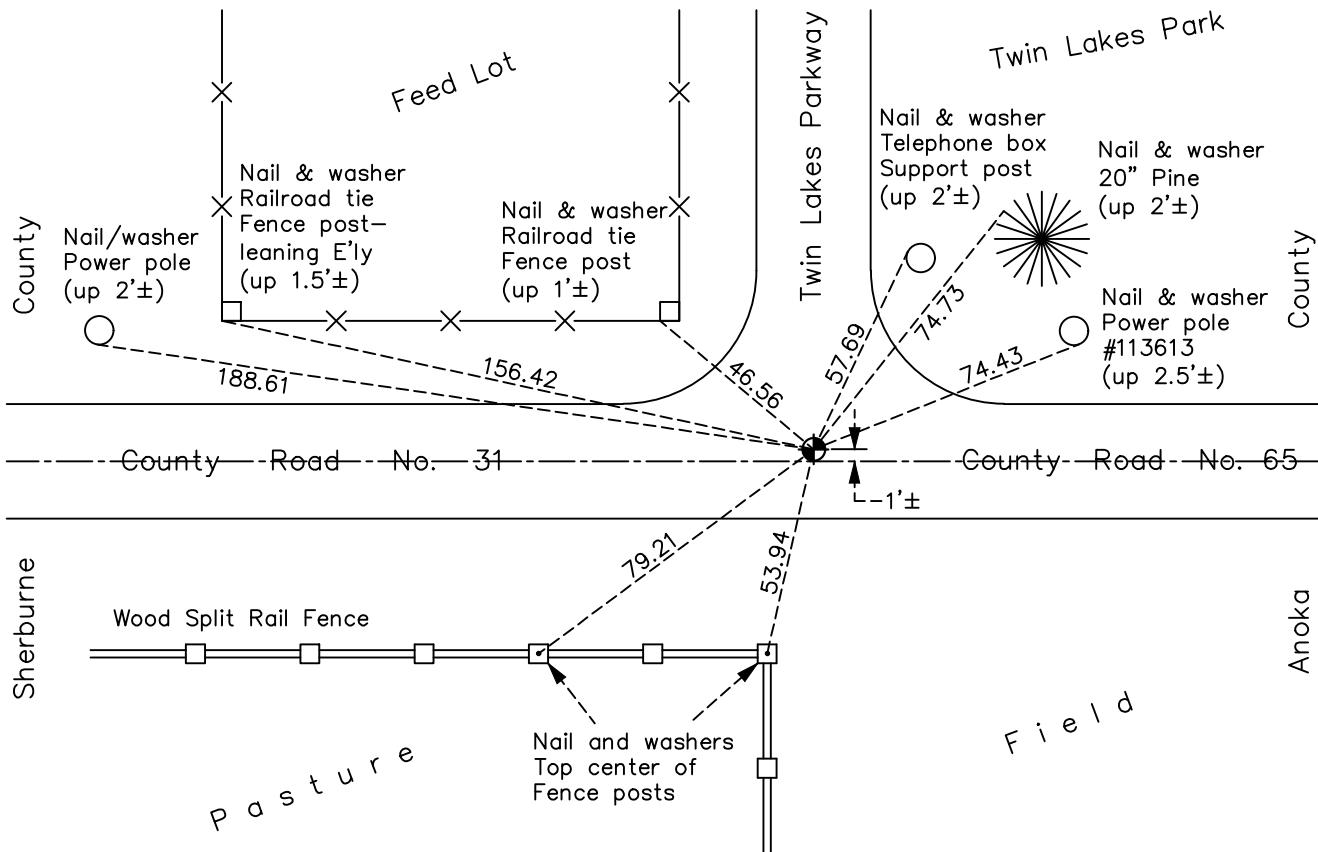
Southwest Corner of Sec. 19 Township 33 Range 25

On the 20th day of October, 1958, the described corner was evidenced by a granite monument set by Caswell

and to perpetuate the location of said corner, at the exact location thereof, a permanent marker was placed consisting of a cast iron monument

AND on the 8th day of March, 2018, said permanent marker was found and the ties were updated

Updated reference ties are as shown below.



Revision Date
4/23/18

N.A.D. 1983 Coordinates
(1996 Adjustment)

County Project Coordinates	
Northing	<u>206953.4163</u>
Easting	<u>437242.9419</u>
Date	<u>9/03/02</u>

I hereby certify that this United States public land survey monument record is correct and complete to the best of my knowledge and belief.
David M Zieglsmeier Date 6/9/21
David M. Zieglsmeier, Anoka County Surveyor
Minnesota License Number 46179

HISTORY OF GOVERNMENT CORNER

Page No. 89

County of Anoka

State of Minnesota

Southwest Corner of Sec. 19 Township 33 Range 25

CORNER HISTORY:

September 1849 - This corner was established by Theodore Conkey, Deputy Surveyor. Conkey marked the position by "set post corner sections 24, 25, 19 and 30" with three bearing trees marked as accessories.

October 20, 1958 - Casewell found a 6" x 6" granite monument down 0.5'± and updated the ties.

October 4, 1963 - Found cast iron monument down 0.2'± with registration number 5333 on it. Monument fits old ties to granite. Updated ties.

July 7, 1969 - Found 3/4" iron pipe not fitting corner ties. Set temporary spike using corner ties.

July 28, 1969 - Replaced broken cast iron monument with a new cast iron monument flush. Updated ties.

July 24, 1973 - Found cast iron monument and updated ties.

July 28, 1976 - Found cast iron monument and updated ties.

July 13, 1979 - Found cast iron monument and updated ties.

July 30, 1982 - Found cast iron monument and updated ties.

June 26, 1985 - Found cast iron monument and updated ties.

August 24, 1988 - Found cast iron monument and updated ties.

June 8, 1994 - Found cast iron monument and updated ties.

May 31, 2000 - Found cast iron monument, set construction ties and updated corner ties prior construction. Removed monument.

July 14, 2000 - Set cast iron monument after construction. Updated ties.

September 3, 2002 - Established NAD 1983 (1996 adj.) Anoka County project coordinates by static GPS methods.

October 1, 2002 - Found cast iron monument and updated ties.

August 2, 2013 - Found cast iron monument and updated ties.

March 8, 2018 - Found cast iron monument. Verified position by VRS GPS methods. Updated ties.