

# CERTIFICATE OF LOCATION OF GOVERNMENT CORNER

County of Anoka

State of Minnesota

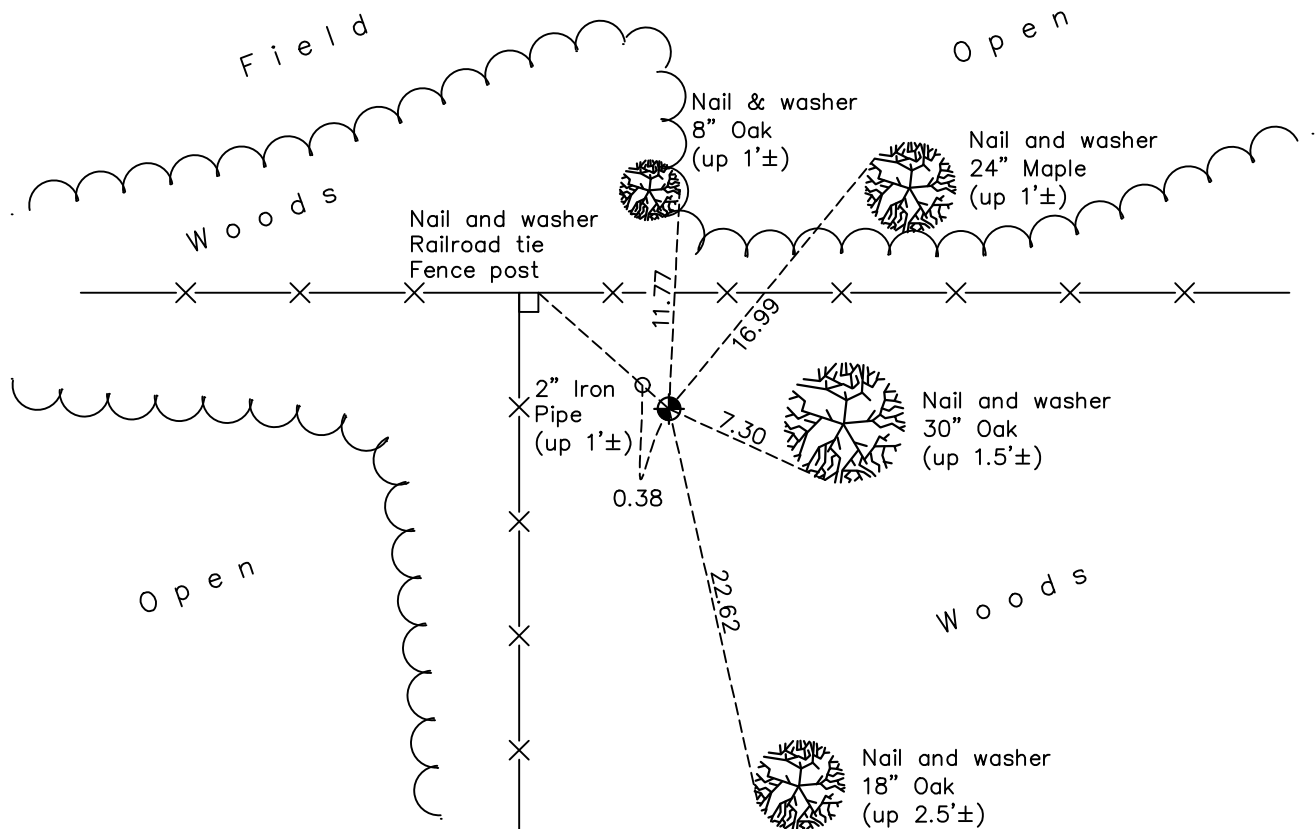
## West 1/4 Corner of Sec. 30 Township 33 Range 25

On the 8th day of May, 1975, the described corner was evidenced by a Sherburne County cast iron monument

and to perpetuate the location of said corner, at the exact location thereof, a permanent marker was placed consisting of the same Sherburne County cast iron monument

AND on the 7th day of March, 2018, said permanent marker was found down 0.2'± and the ties were updated

Updated reference ties are as shown below.



Revision Date

4/23/18

N.A.D. 1983 Coordinates  
(1996 Adjustment)

County Project Coordinates	
Northing	<u>204300.9704</u>
Easting	<u>437209.6276</u>
Date	<u>2/19/03</u>

I hereby certify that this United States public land survey monument record is correct and complete to the best of my knowledge and belief.

*David M. Zieglermeier* Date 6/9/21

David M. Zieglermeier, Anoka County Surveyor

Minnesota License Number 46179

# HISTORY OF GOVERNMENT CORNER

Page No. 90

County of Anoka

State of Minnesota

West 1/4 Corner of Sec. 30 Township 33 Range 25

## **CORNER HISTORY:**

September 1849 - This corner was established by Theodore Conkey, Deputy Surveyor. Conkey marked the position by "set post for quarter section corner" with one bearing tree marked as an accessory.

May 8, 1975 - Found Sherburne County cast iron monument flush. Established ties to monument.

July 28, 1976 - Found Sherburne County cast iron monument and updated ties.

July 23, 1979 - Found Sherburne County cast iron monument and updated ties.

August 10, 1982 - Found Sherburne County cast iron monument and updated ties.

July 15, 1985 - Found Sherburne County cast iron monument and updated ties.

June 12, 1989 - Found Sherburne County cast iron monument and updated ties.

June 8, 1994 - Found Sherburne County cast iron monument and updated ties.

February 19, 2003 - Found Sherburne County cast iron monument and updated ties. Established NAD 1983 (1996 adj.) Anoka County project coordinates by static GPS methods.

April 23, 2013 - Found Sherburne County cast iron monument down 0.2'± and updated ties.

March 7, 2018 - Found Sherburne County cast iron monument down 0.2'± and updated ties.