

CERTIFICATE OF LOCATION OF GOVERNMENT CORNER

County of Anoka

State of Minnesota

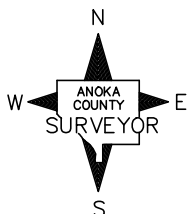
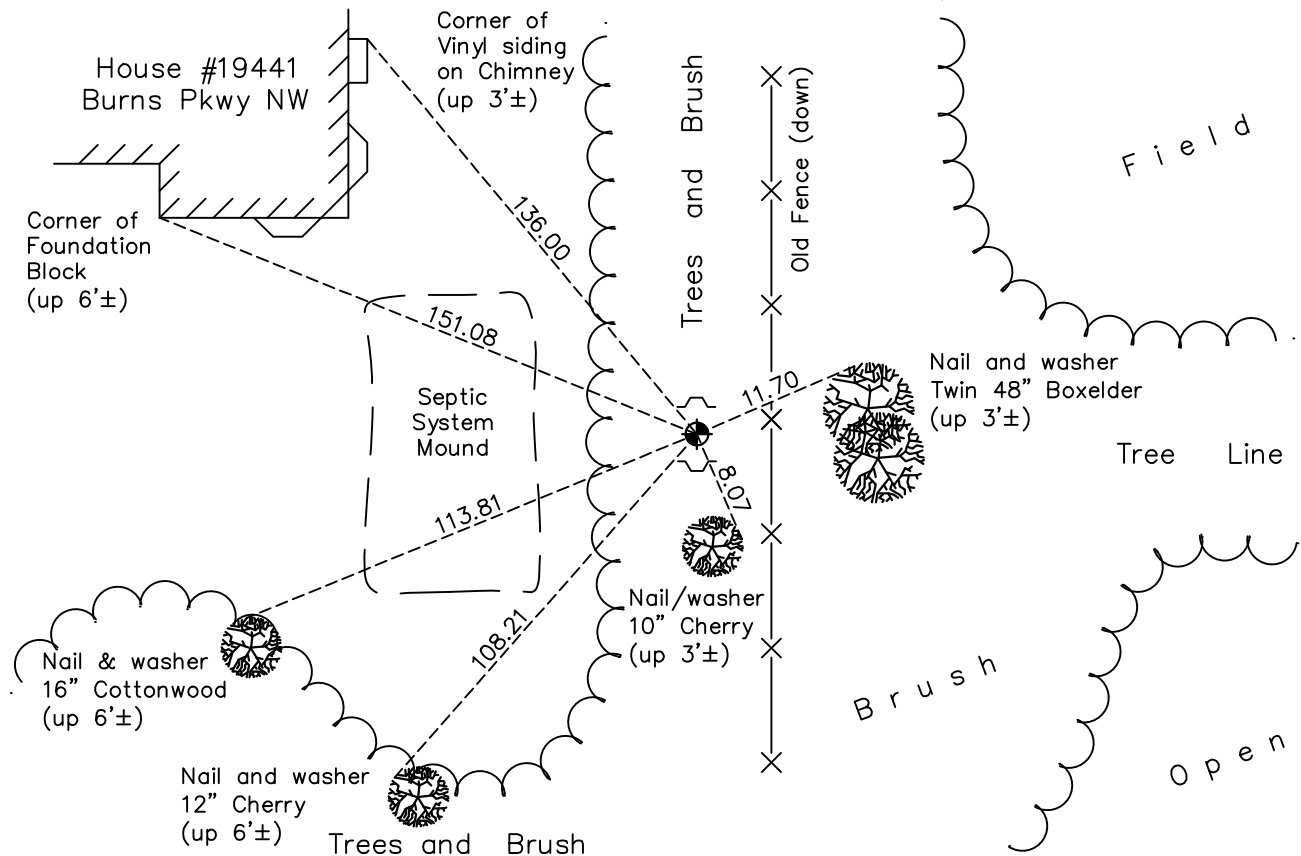
West 1/4 Corner of Sec. 28 Township 33 Range 25

On the 20th day of July, 1971, the described corner was evidenced by area resurvey

and to perpetuate the location of said corner, at the exact location thereof, a permanent marker was placed consisting of a cast iron monument with a sign and post on the north and south side

AND on the 18th day of January, 2018, said permanent marker was found down 0.2'± and the ties were updated

Updated reference ties are as shown below.



Revision Date

4/23/18

N.A.D. 1983 Coordinates
(1996 Adjustment)

County Project Coordinates	
Northing	<u>204180.9391</u>
Easting	<u>447666.7186</u>
Date	<u>2/18/03</u>

I hereby certify that this United States public land survey monument record is correct and complete to the best of my knowledge and belief.

David M. Ziegmeier Date 6/9/21

David M. Ziegmeier, Anoka County Surveyor

Minnesota License Number 46179

HISTORY OF GOVERNMENT CORNER

Page No. 92

County of Anoka

State of Minnesota

West 1/4 Corner of Sec. 28 Township 33 Range 25

CORNER HISTORY:

May 1855 - This corner was established by James M. Marsh, Deputy Surveyor. Marsh marked the position by "set quarter section post" with two bearing trees marked as accessories.

July 20, 1971 - Set cast iron monument using area resurvey. Established ties to monument. set sign and post on the north side

August 9, 1973 - Found cast iron monument and updated ties.

July 28, 1976 - Found cast iron monument and updated ties.

July 23, 1979 - Found cast iron monument and updated ties.

August 3, 1982 - Found cast iron monument and updated ties.

September 1, 1988 - Found cast iron monument and updated ties.

July 13, 1994 - Found cast iron monument and updated ties. Set sign and post on the south side.

February 18, 2003 - Established NAD 1983 (1996 adj.) Anoka county project coordinates by static GPS methods.

November 1, 2013 - Found cast iron monument w/signs and posts on the north and south sides. Updated ties.

January 18, 2018 - Found cast iron monument down 0.2'± and updated ties.