

# CERTIFICATE OF LOCATION OF GOVERNMENT CORNER

County of Anoka

State of Minnesota

## Witness Corner of Sec. 27 Township 33 Range 25

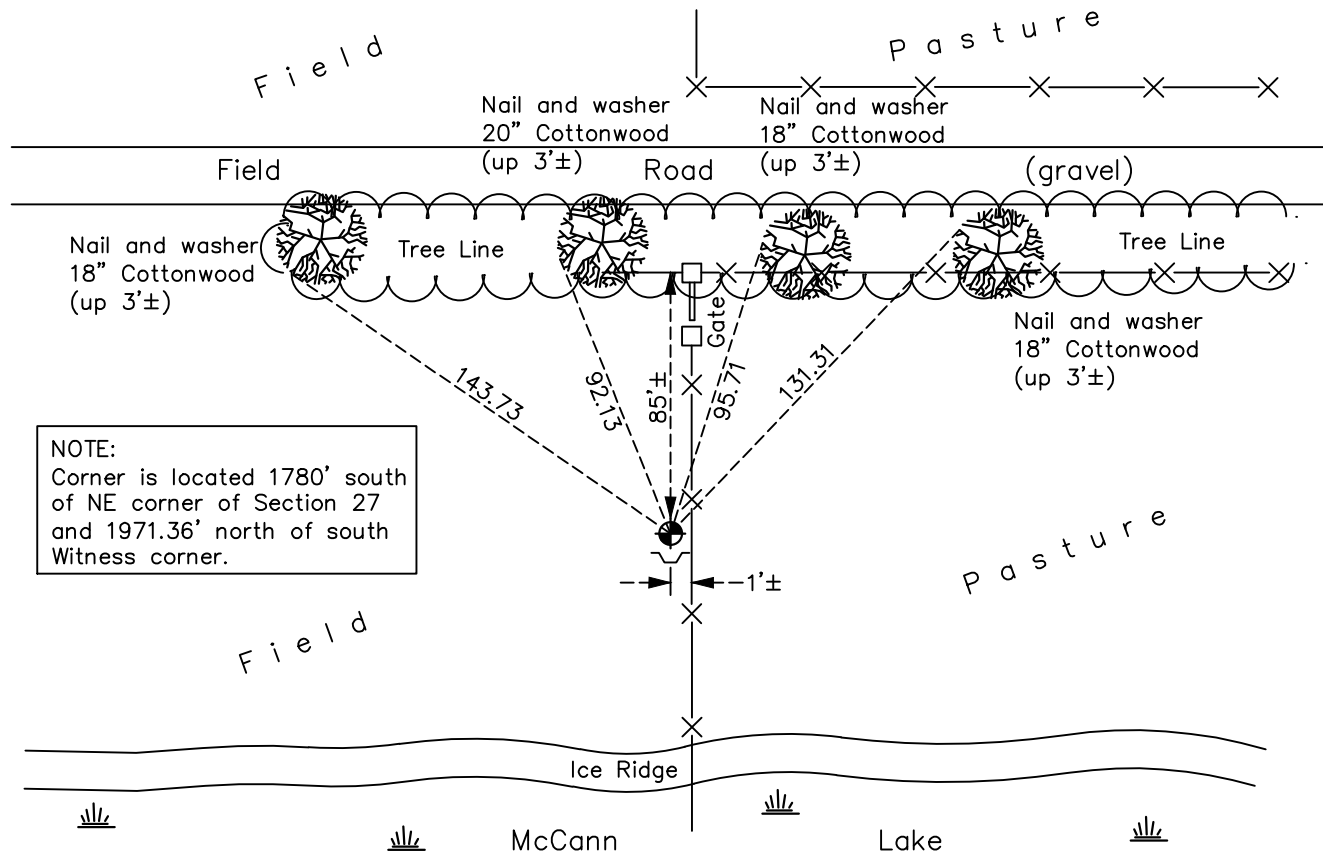
(On east line of NE 1/4)

On the 25th day of July, 1975, the described corner was evidenced by area resurvey

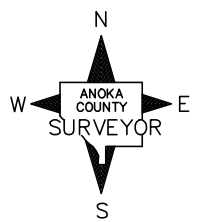
and to perpetuate the location of said corner, at the exact location thereof, a permanent marker was placed consisting of a cast iron monument w/sign and post on the south side

AND on the 26th day of March, 2018, said permanent marker was found flush and the ties were updated

Updated reference ties are as shown below.



**NOTE:**  
 Corner is located 1780' south of NE corner of Section 27 and 1971.36' north of south Witness corner.



Revision Date  
4/23/18

N.A.D. 1983 Coordinates  
 (1996 Adjustment)

County Project Coordinates	
Northing	204973.4714
Easting	458171.4144
Date	2/25/03

I hereby certify that this United States public land survey monument record is correct and complete to the best of my knowledge and belief.  
*David M Zieglsmeier* Date 6/11/21  
 David M. Zieglsmeier, Anoka County Surveyor  
 Minnesota License Number 46179

# HISTORY OF GOVERNMENT CORNER

Page No. 94A

County of Anoka

State of Minnesota

Witness Corner of Sec. 27 Township 33 Range 25  
(On east line of NE 1/4)

## **CORNER HISTORY:**

July 25, 1975 - Set cast iron monument flush using area resurvey. Set sign and post on the south side. No corner ties available.

July 24, 1979 - Found cast iron monument. No corner ties available.

August 9, 1982 - Found cast iron monument. No corner ties available.

July 15, 1985 - Found cast iron monument and updated ties.

July 13, 1988 - Found cast iron monument destroyed. Reset cast iron monument flush using area resurvey. No corner ties available.

July 7, 1989 - Found cast iron monument. No corner ties available.

July 21, 1994 - Found cast iron monument. No corner ties available.

February 25, 2003 - Established NAD 1983 (1996 adj.) Anoka County project coordinates by static GPS methods.

November 1, 2013 - Found cast iron monument broken. Checked position of center fin by VRS GPS methods. Established ties to center fin.

December 2, 2013 - Replaced broken cast iron monument with a new cast iron monument. Verified position by VRS GPS methods. Updated ties. Set sign and post on the south side.

March 26, 2018 - Found cast iron monument flush w/sign and post on the south side. Verified position by VRS GPS methods. Updated ties.