

CERTIFICATE OF LOCATION OF GOVERNMENT CORNER

County of Anoka

State of Minnesota

Witness Corner of Sec. 27 Township 33 Range 25

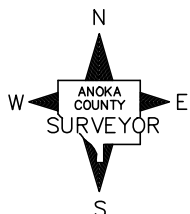
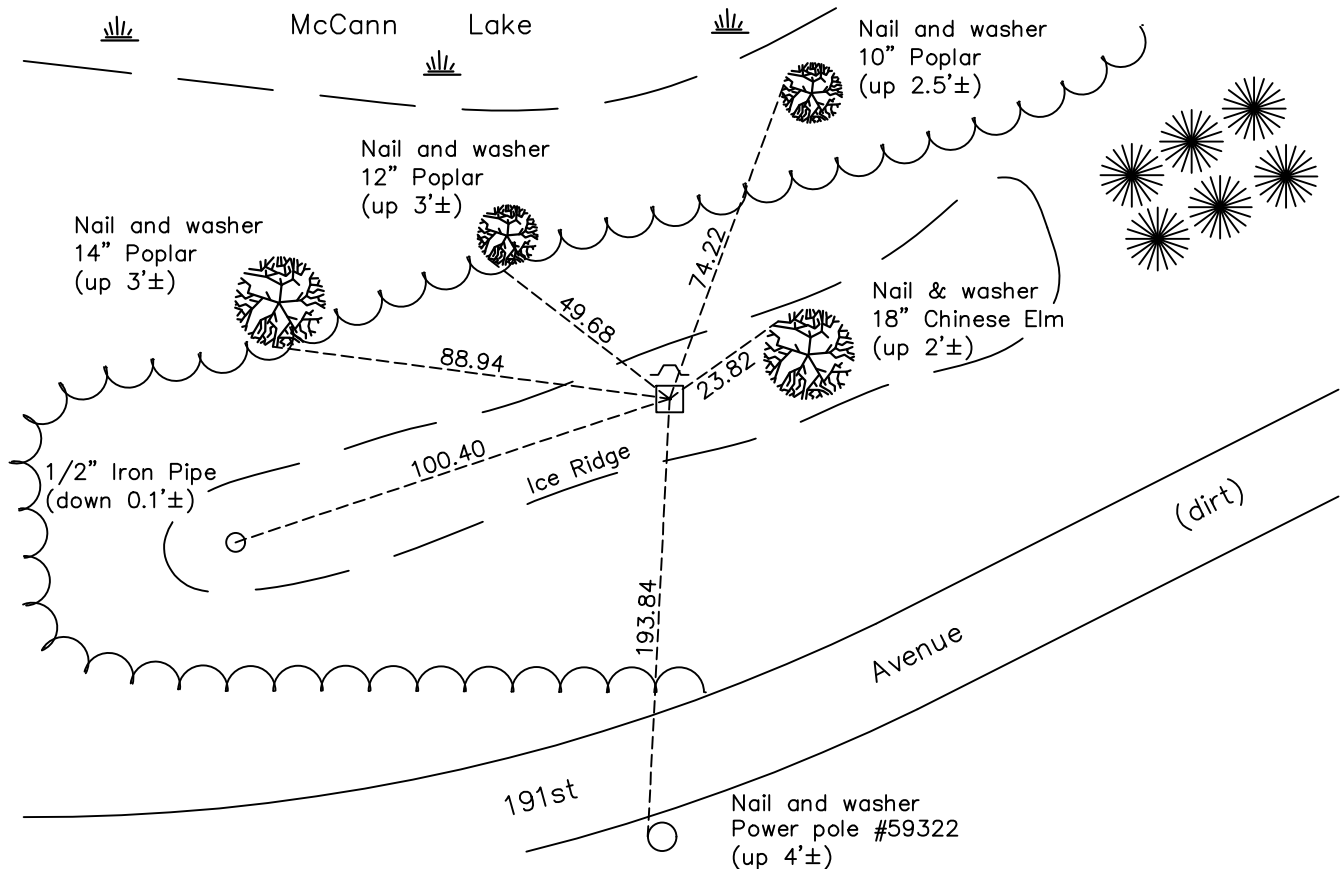
(On east line of SE 1/4)

On the 19th day of June, 1964, the described corner was evidenced by a granite monument

and to perpetuate the location of said corner, at the exact location thereof, a permanent marker was placed consisting of the same granite monument with a sign and post on the north side

AND on the 6th day of March, 2018, said permanent marker was found up 0.1'± and the ties were updated

Updated reference ties are as shown below.



Revision Date

8/29/18

N.A.D. 1983 Coordinates
(1996 Adjustment)

County Project Coordinates	
Northing	203002.2132
Easting	458191.8338
Date	2/25/03

I hereby certify that this United States public land survey monument record is correct and complete to the best of my knowledge and belief.

David M. Zieglmeier Date 6/11/21

David M. Zieglmeier, Anoka County Surveyor

Minnesota License Number 46179

HISTORY OF GOVERNMENT CORNER

Page No. 95

County of Anoka

State of Minnesota

Witness Corner of Sec. 27 Township 33 Range 25
(On east line of SE 1/4)

CORNER HISTORY:

June 19, 1964 - Found 6" x 6" granite monument up 0.2'± set to cardinal points. Updated ties.

August 17, 1965 - Found granite monument and updated ties.

August 1, 1973 - Found granite monument and updated ties.

July 28, 1976 - Found granite monument and updated ties.

July 29, 1979 - Found granite monument and updated ties.

August 2, 1982 - Found granite monument and updated ties.

June 27, 1985 - Found granite monument and updated ties.

June 29, 1989 - Found granite monument and updated ties.

July 21, 1994 - Found granite monument w/sign and post on the north side. Updated ties.

February 25, 2003 - Established NAD 1983 (1996 adj.) Anoka County project coordinates by static GPS methods.

November 5, 2013 - Found granite monument. Verified position by VRS GPS methods. Updated ties.

March 6, 2018 - Found granite monument up 0.1'± and updated ties.