

CERTIFICATE OF LOCATION OF GOVERNMENT CORNER

County of Anoka

State of Minnesota

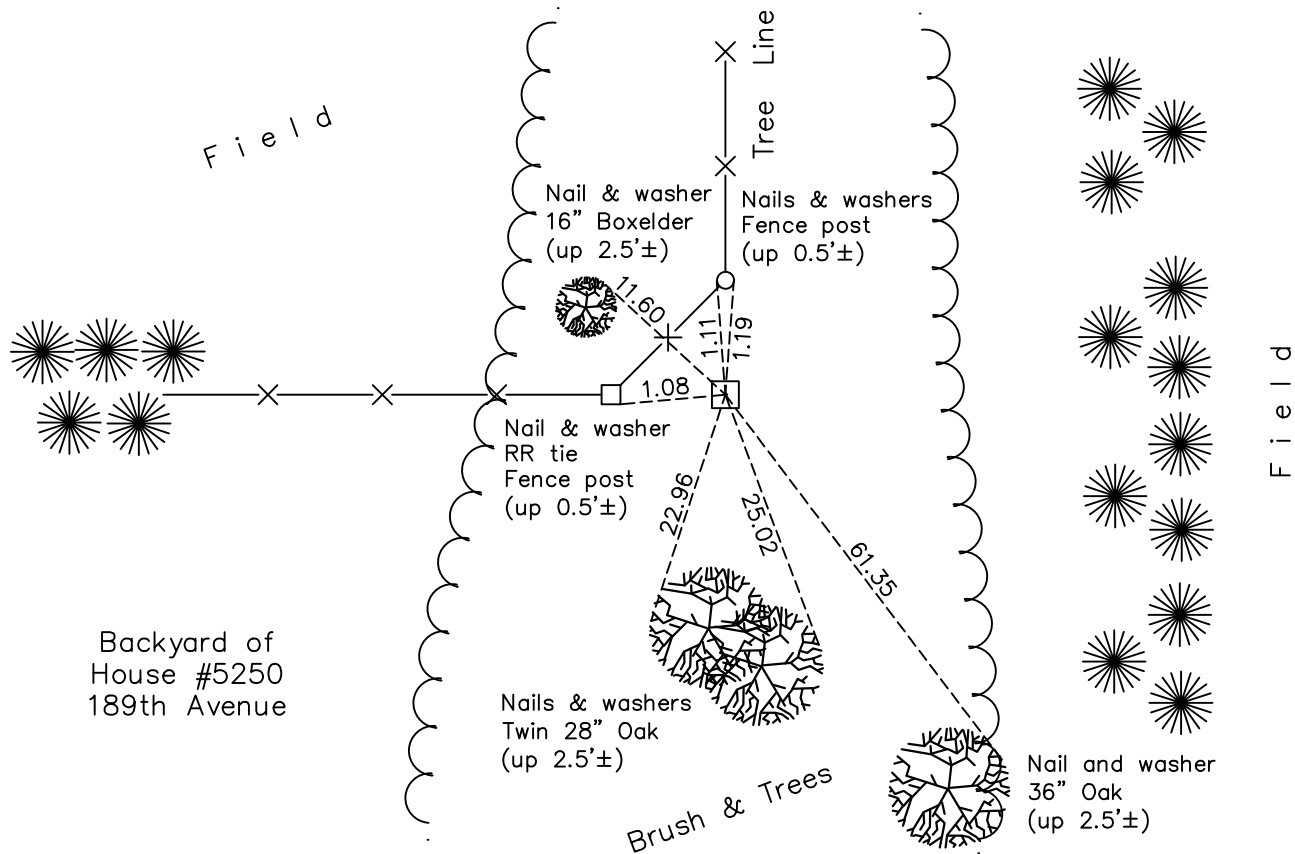
South 1/4 Corner of Sec. 25 Township 33 Range 25

On the 3rd day of December, 1963, the described corner was evidenced by a 4" square concrete monument with no visible center point

and to perpetuate the location of said corner, at the exact location thereof, a permanent marker was placed consisting of the same concrete monument

AND on the 27th day of March, 2018, said permanent marker was found down 0.5'± and the ties were updated

Updated reference ties are as shown below.



N

S

Revision Date

4/23/18

N.A.D. 1983 Coordinates
(1996 Adjustment)

County Project Coordinates	
Northing	<u>201445.6336</u>
Easting	<u>466030.3775</u>
Date	<u>2/24/03</u>

I hereby certify that this United States public land survey monument record is correct and complete to the best of my knowledge and belief.

David M Zieglsmeier Date 6/11/21

David M. Zieglsmeier, Anoka County Surveyor

Minnesota License Number 46179

HISTORY OF GOVERNMENT CORNER

Page No. 99

County of Anoka

State of Minnesota

South 1/4 Corner of Sec. 25 Township 33 Range 25

CORNER HISTORY:

May 1855 - This corner was established by James M. Marsh, Deputy Surveyor. Marsh marked the position by "set quarter section post" with two bearing trees marked as accessories.

August 13, 1945 - Harvey Cartwright set a concrete monument using north, south and east fence lines. Established ties to monument.

December 3, 1963 - Found 4" square concrete monument down 0.2'± and updated ties.

August 16, 1965 - Found concrete monument and updated ties.

July 28, 1969 - Found concrete monument with a 3/4" iron pipe on the south side. Updated ties.

August 8, 1973 - Found concrete monument and updated ties.

July 29, 1976 - Found concrete monument and updated ties.

July 13, 1979 - Found concrete monument and updated ties.

August 9, 1982 - Found concrete monument and updated ties.

July 3, 1985 - Found concrete monument and updated ties.

September 2, 1988 - Found concrete monument and updated ties.

July 18, 1994 - Found concrete monument and updated ties.

February 24, 2003 - Found concrete monument and updated ties. Established NAD 1983 (1996 adj.) Anoka County project coordinates by static GPS methods.

November 15, 2013 - Found concrete monument down 0.3'± and updated ties.

March 27, 2018 - Found concrete monument down 0.5'± and updated ties.