

CERTIFICATE OF LOCATION OF GOVERNMENT CORNER

County of Anoka

State of Minnesota

Witness Corner of Sec. 26 Township 33 Range 25

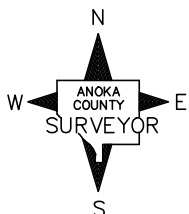
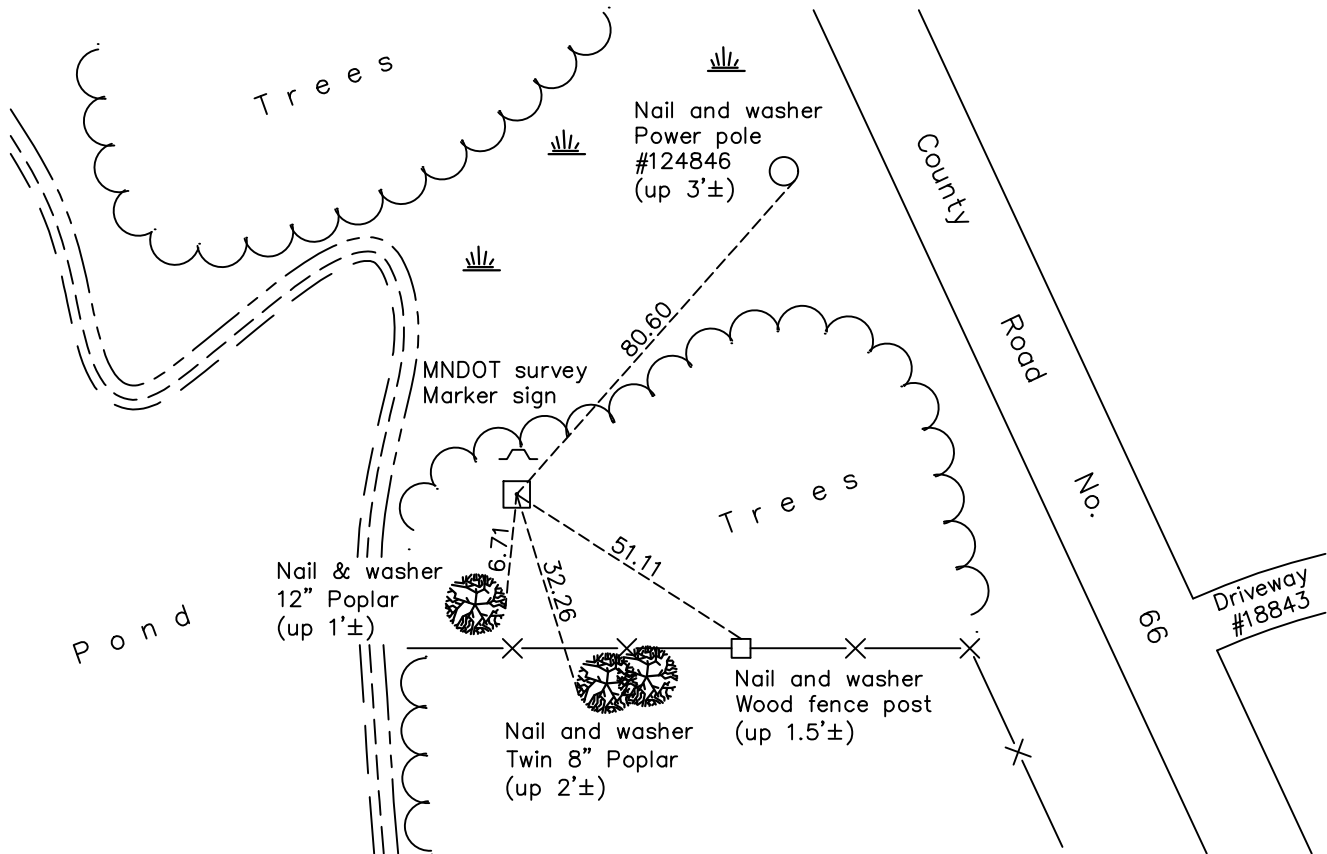
(On south line of SE 1/4)

On the 14th day of May, 1975, the described corner was evidenced by a 3" X 3"
concrete monument

and to perpetuate the location of said corner, at the exact location thereof, a permanent marker was placed consisting of the same concrete monument

AND on the 16th day of March, 2018, said permanent marker was found up 0.3'± and
the ties were updated

Updated reference ties are as shown below.



Revision Date

4/24/18

N.A.D. 1983 Coordinates
(1996 Adjustment)

County Project Coordinates	
Northing	<u>201473.6027</u>
Easting	<u>461169.1830</u>
Date	<u>2/24/03</u>

I hereby certify that this United States public land survey monument record is correct and complete to the best of my knowledge and belief.

David M. Zieglmeier Date 6/11/21

David M. Zieglmeier, Anoka County Surveyor

Minnesota License Number 46179

HISTORY OF GOVERNMENT CORNER

Page No. 101

County of Anoka

State of Minnesota

Witness Corner of Sec. 26 Township 33 Range 25
(On south line of SE 1/4)

CORNER HISTORY:

May 1855 - Deputy Surveyor James M. Marsh reached a pond at 34.20 chains from corner to sections 25, 26, 35 and 36 and "set witness corner to quarter section corner" with two bearing trees as accessories.

May 14, 1975 - Found 3" x 3" concrete monument flush and updated ties.

July 29, 1976 - Found concrete monument and updated ties.

July 13, 1979 - Found concrete monument and updated ties.

August 9, 1982 - Found concrete monument and updated ties.

July 12, 1985 - Found concrete monument and updated ties.

July 5, 1988 - Found concrete monument and updated ties.

July 21, 1994 - Found concrete monument and updated ties.

February 24, 2003 - Found concrete monument and updated ties. Established NAD 1983 (1996 adj.) Anoka County project coordinates by static GPS methods.

October, 2013 - Found concrete monument up 0.3'± and updated ties.

March 16, 2018 - Found concrete monument up 0.3'± and updated ties.