

CERTIFICATE OF LOCATION OF GOVERNMENT CORNER

County of Anoka

State of Minnesota

Witness Corner of Sec. 26 Township 33 Range 25

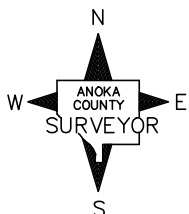
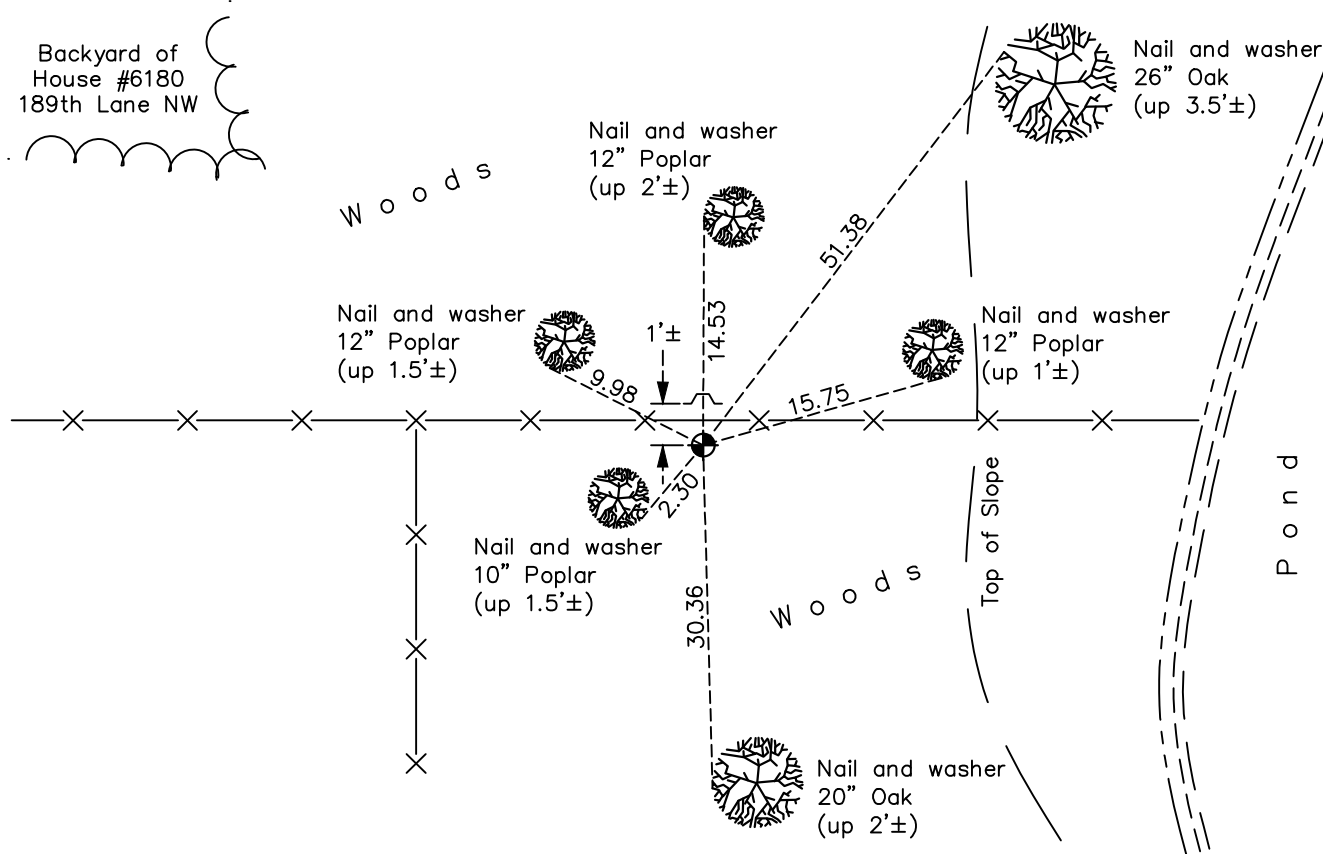
(On south line of SW 1/4)

On the 21st day of July, 1975, the described corner was evidenced by area resurvey

and to perpetuate the location of said corner, at the exact location thereof, a permanent marker was placed consisting of a cast iron monument with a sign and post on the north side

AND on the 26th day of March, 2018, said permanent marker was found flush and the ties were updated

Updated reference ties are as shown below.



Revision Date

4/24/18

N.A.D. 1983 Coordinates
(1996 Adjustment)

County Project Coordinates	
Northing	<u>201479.8846</u>
Easting	<u>460036.1817</u>
Date	<u>2/25/03</u>

I hereby certify that this United States public land survey monument record is correct and complete to the best of my knowledge and belief.
David M. Zieglsmeier Date 6/11/21
 David M. Zieglsmeier, Anoka County Surveyor
 Minnesota License Number 46179

HISTORY OF GOVERNMENT CORNER

Page No. 101A

County of Anoka

State of Minnesota

Witness Corner of Sec. 26 Township 33 Range 25
(On south line of SW 1/4)

CORNER HISTORY:

July 21, 1975 - Set cast iron monument flush using area resurvey. Established ties to monument.

July 29, 1976 - Found cast iron monument and updated ties.

July 24, 1979 - Found cast iron monument and updated ties.

August 3, 1982 - Found cast iron monument and updated ties.

July 12, 1985 - Found cast iron monument and updated ties.

June 22, 1989 - Found cast iron monument w/sign and post on the north side. Updated ties.

July 25, 1994 - Found cast iron monument and updated ties.

February 25, 2003 - Found cast iron monument and updated ties. Established NAD 1983 (1996 adj.) Anoka County project coordinates by static GPS methods.

October 29, 2013 - Found cast iron monument and updated ties.

March 26, 2018 - Found cast iron monument flush and updated ties.