

# CERTIFICATE OF LOCATION OF GOVERNMENT CORNER

County of Anoka

State of Minnesota

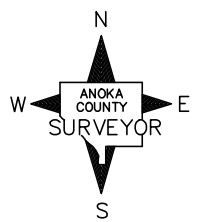
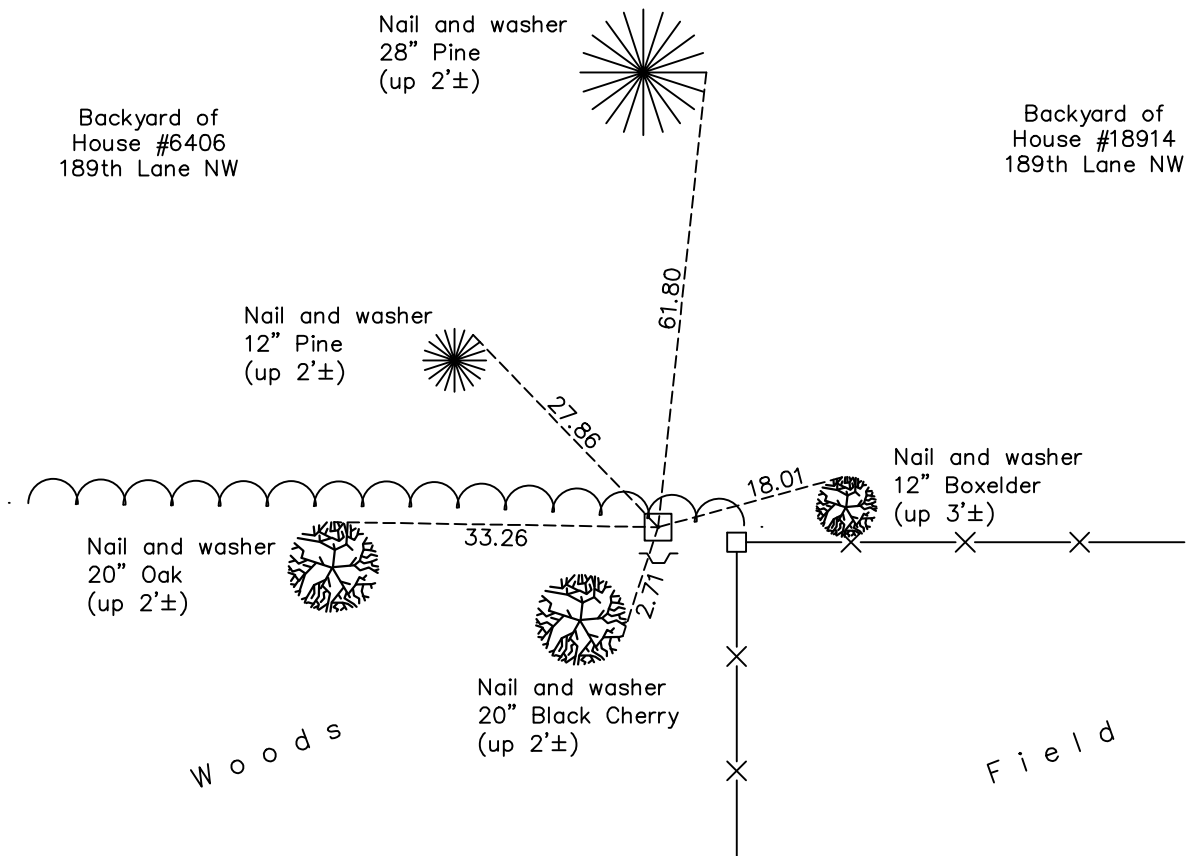
## Northeast Corner of Sec. 34 Township 33 Range 25

On the 17th day of June, 1963, the described corner was evidenced by an 8" square granite monument

and to perpetuate the location of said corner, at the exact location thereof, a permanent marker was placed consisting of the same granite monument with a sign and post on the south side

AND on the 26th day of March, 2018, said permanent marker was found flush and the ties were updated

Updated reference ties are as shown below.



N.A.D. 1983 Coordinates  
(1996 Adjustment)

County Project Coordinates	
Northing	<u>201490.0054</u>
Easting	<u>458207.6863</u>
Date	<u>2/24/03</u>

Revision Date  
4/24/18

I hereby certify that this United States public land survey monument record is correct and complete to the best of my knowledge and belief.

*David M Zieglmeier* Date 6/11/21

David M. Zieglmeier, Anoka County Surveyor  
Minnesota License Number 46179

# HISTORY OF GOVERNMENT CORNER

Page No. 102

County of Anoka

State of Minnesota

## Northeast Corner of Sec. 34 Township 33 Range 25

### **CORNER HISTORY:**

May 1855 - This corner was established by James M. Marsh, Deputy Surveyor. Marsh marked the position by "set post corner of sections 26, 27, 34 and 35" with two bearing trees marked as accessories.

June 17, 1963 - Found 8" x 8" granite monument and updated ties.

August 17, 1965 - Found granite monument up 0.2'± and updated ties.

July 24, 1969 - Found granite monument and updated ties.

August 2, 1973 - Found granite monument and updated ties.

July 29, 1976 - Found granite monument and updated ties.

July 24, 1979 - Found granite monument and updated ties.

August 3, 1982 - Found granite monument and updated ties.

September 8, 1988 - Found granite monument and updated ties.

June 29, 1994 - Found granite monument w/sign and post on the south side. Updated ties.

February 24, 2003 - Established NAD 1983 (1996 adj.) Anoka County project coordinates by static GPS methods.

November 5, 2013 - Found granite monument and updated ties.

March 26, 2018 - Found granite monument flush and updated ties.