

CERTIFICATE OF LOCATION OF GOVERNMENT CORNER

County of Anoka

State of Minnesota

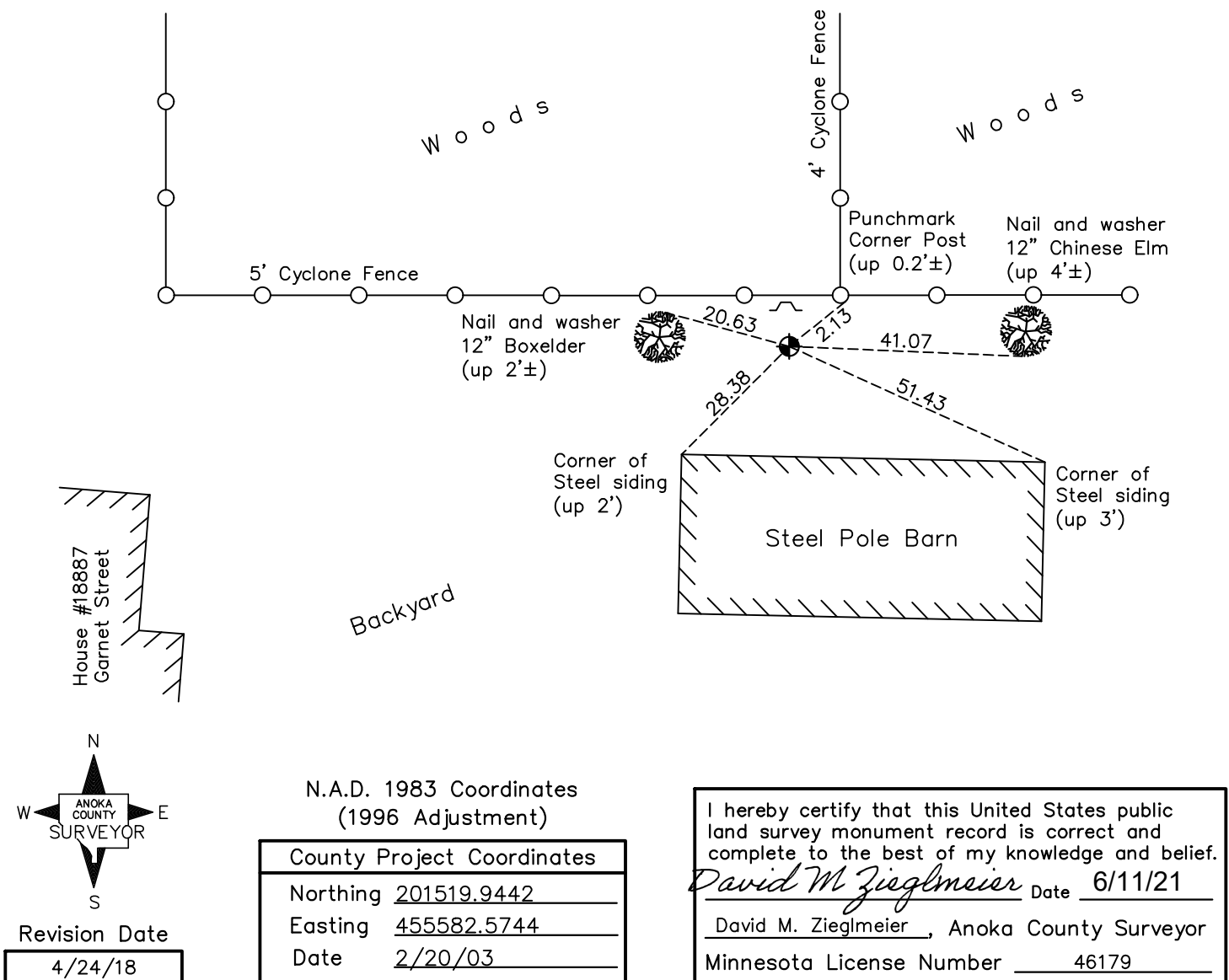
South 1/4 Corner of Sec. 27 Township 33 Range 25

On the 15th day of June, 1966, the described corner was evidenced by area resurvey

and to perpetuate the location of said corner, at the exact location thereof, a permanent marker was placed consisting of a cast iron monument with a sign and post on the north side

AND on the 21th day of March, 2018, said permanent marker was found up 0.1'± and the ties were updated

Updated reference ties are as shown below.



N

 S
 ANOKA COUNTY SURVEYOR
 Revision Date
4/24/18

N.A.D. 1983 Coordinates
(1996 Adjustment)

County Project Coordinates	
Northing	<u>201519.9442</u>
Easting	<u>455582.5744</u>
Date	<u>2/20/03</u>

I hereby certify that this United States public land survey monument record is correct and complete to the best of my knowledge and belief.
David M Zieglmeier Date 6/11/21
 David M. Zieglmeier, Anoka County Surveyor
 Minnesota License Number 46179

HISTORY OF GOVERNMENT CORNER

Page No. 103

County of Anoka

State of Minnesota

South 1/4 Corner of Sec. 27 Township 33 Range 25

CORNER HISTORY:

May 1855 - This corner was established by James M. Marsh, Deputy Surveyor. Marsh marked the position by "set quarter section post" with one bearing tree marked as an accessory.

June 15, 1966 - Set cast iron monument flush in rock pile using area resurvey. Established ties to monument.

July 22, 1969 - Found cast iron monument and updated ties.

July 31, 1973 - Found cast iron monument and updated ties.

July 29, 1976 - Found cast iron monument and updated ties.

July 24, 1979 - Found cast iron monument and updated ties.

August 6, 1982 - Found cast iron monument and updated ties.

July 3, 1985 - Found cast iron monument and updated ties.

June 6, 1988 - Found cast iron monument and updated ties.

June 29, 1994 - Found cast iron monument w/sign and post on the north side. Updated ties.

February 20, 2003 - Established NAD 1983 (1996 adj.) Anoka County project coordinates by static GPS methods.

November 5, 2013 - Found cast iron monument up 0.1'± and updated ties.

March 21, 2018 - Found cast iron monument up 0.1'± and updated ties.