

CERTIFICATE OF LOCATION OF GOVERNMENT CORNER

County of Anoka

State of Minnesota

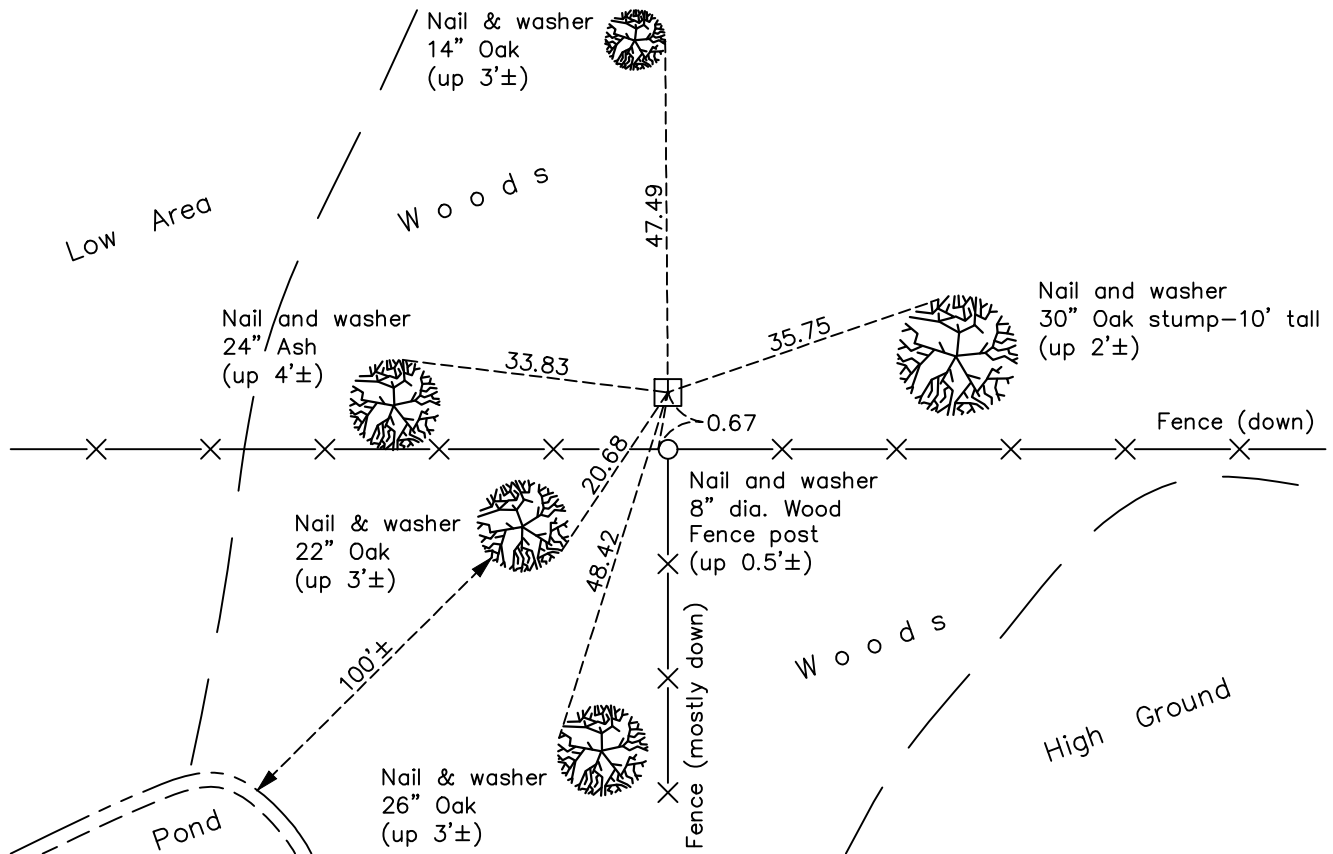
Northeast Corner of Sec. 33 Township 33 Range 25

On the 29th day of March, 1961, the described corner was evidenced by a square stone

and to perpetuate the location of said corner, at the exact location thereof, a permanent marker was placed consisting of the same square stone

AND on the 12th day of March, 2018, said permanent marker was found flush and the ties were updated

Updated reference ties are as shown below.



Revision Date

4/24/18

N.A.D. 1983 Coordinates
(1996 Adjustment)

County Project Coordinates	
Northing	<u>201549.7138</u>
Easting	<u>452954.8892</u>
Date	<u>2/20/03</u>

I hereby certify that this United States public land survey monument record is correct and complete to the best of my knowledge and belief.

David M Ziegmeier Date 6/11/21

David M. Ziegmeier, Anoka County Surveyor

Minnesota License Number 46179

HISTORY OF GOVERNMENT CORNER

Page No. 104

County of Anoka

State of Minnesota

Northeast Corner of Sec. 33 Township 33 Range 25

CORNER HISTORY:

May 1855 - This corner was established by James M. Marsh, Deputy Surveyor. Marsh marked the position by "set post corner of sections 27, 28, 33 and 34" with two bearing trees marked as accessories.

March 29, 1961 - Found a 0.35' x 0.45' square stone up 0.2'± at intersection of fences. Updated ties.

August 25, 1965 - Found square stone and set a 1/2" iron pipe on north face. Updated ties.

July 22, 1969 - Found square stone and updated ties.

July 27, 1973 - Found square stone and updated ties.

July 29, 1976 - Found square stone and updated ties.

July 12, 1979 - Found square stone and updated ties.

August 6, 1982 - Found square stone and updated ties.

July 3, 1985 - Found square stone and updated ties.

September 8, 1988 - Found square stone and updated ties.

July 13, 1994 - Found square stone and updated ties.

February 20, 2003 - Found square stone and updated ties. Established NAD 1983 (1996 adj.) Anoka County project coordinates by static GPS methods.

October 30, 2013 - Found square stone and updated ties.

March 12, 2018 - Found square stone flush and updated ties.