

CERTIFICATE OF LOCATION OF GOVERNMENT CORNER

County of Anoka

State of Minnesota

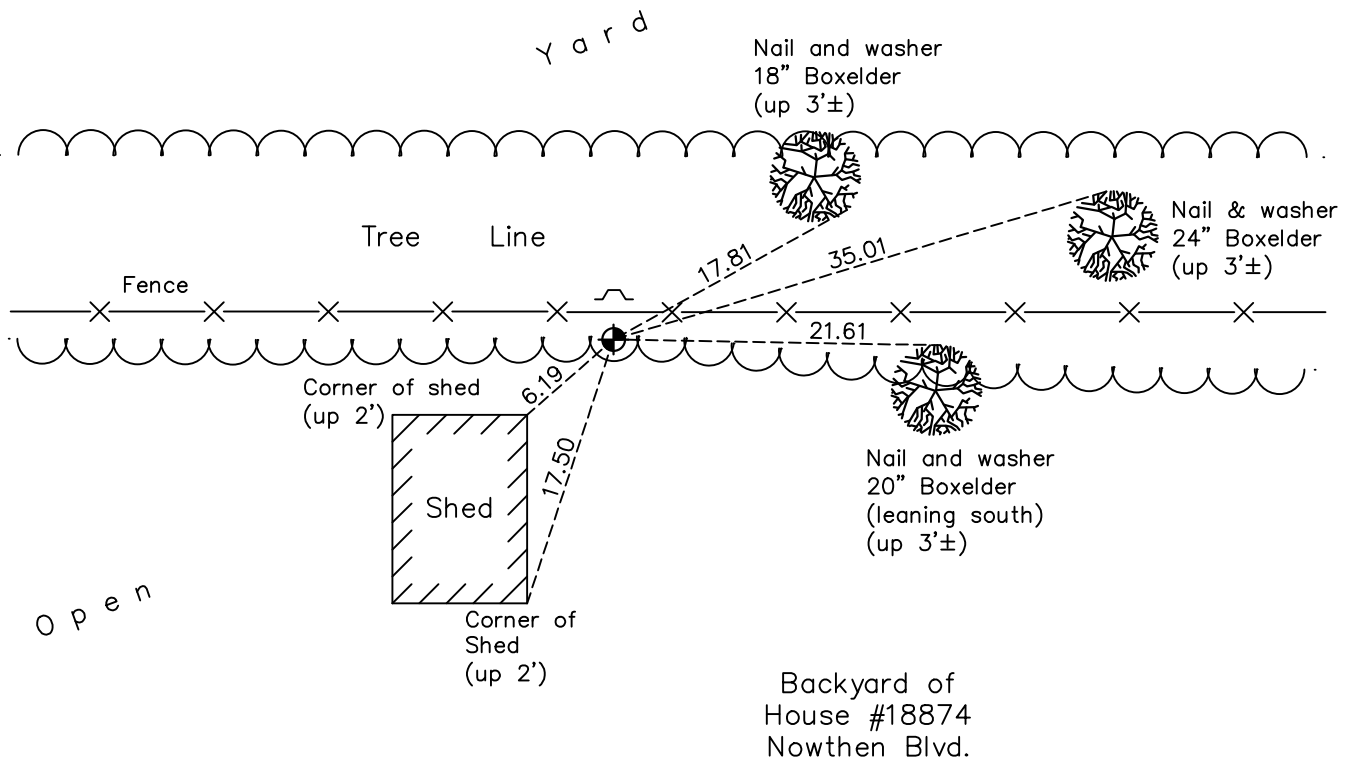
South 1/4 Corner of Sec. 28 Township 33 Range 25

On the 20th day of July, 1971, the described corner was evidenced by area resurvey

and to perpetuate the location of said corner, at the exact location thereof, a permanent marker was placed consisting of a cast iron monument with a sign and post on the north side

AND on the 8th day of March, 2018, said permanent marker was found flush and the ties were updated

Updated reference ties are as shown below.



Revision Date

4/24/18

N.A.D. 1983 Coordinates
(1996 Adjustment)

County Project Coordinates

Northing 201574.3181

Easting 450326.7434

Date 2/19/03

I hereby certify that this United States public land survey monument record is correct and complete to the best of my knowledge and belief.

David M Zieglsmeier Date 6/11/21

David M. Zieglsmeier, Anoka County Surveyor

Minnesota License Number 46179

HISTORY OF GOVERNMENT CORNER

Page No. 105

County of Anoka

State of Minnesota

South 1/4 Corner of Sec. 28 Township 33 Range 25

CORNER HISTORY:

May 1855 - This corner was established by James M. Marsh, Deputy Surveyor. Marsh marked the position by "set quarter section post" with one bearing tree marked as an accessory.

July 20, 1971 - Set cast iron monument using area resurvey. Established ties to monument. Set sign and post on north side.

July 27, 1973 - Found cast iron monument and updated ties.

July 29, 1976 - Found cast iron monument and updated ties.

July 12, 1979 - Found cast iron monument and updated ties.

August 10, 1982 - Found cast iron monument and updated ties.

July 3, 1985 - Found cast iron monument and updated ties.

September 1, 1988 - Found cast iron monument and updated ties.

July 7, 1994 - Found cast iron monument and updated ties.

February 19, 2003 - Established NAD 1983 (1996 adj.) Anoka County project coordinates by static GPS methods.

November 4, 2013 - Found cast iron monument and updated ties.

March 8, 2018 - Found cast iron monument flush and updated ties.