

CERTIFICATE OF LOCATION OF GOVERNMENT CORNER

County of Anoka

State of Minnesota

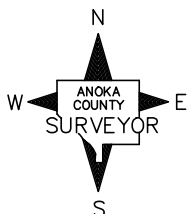
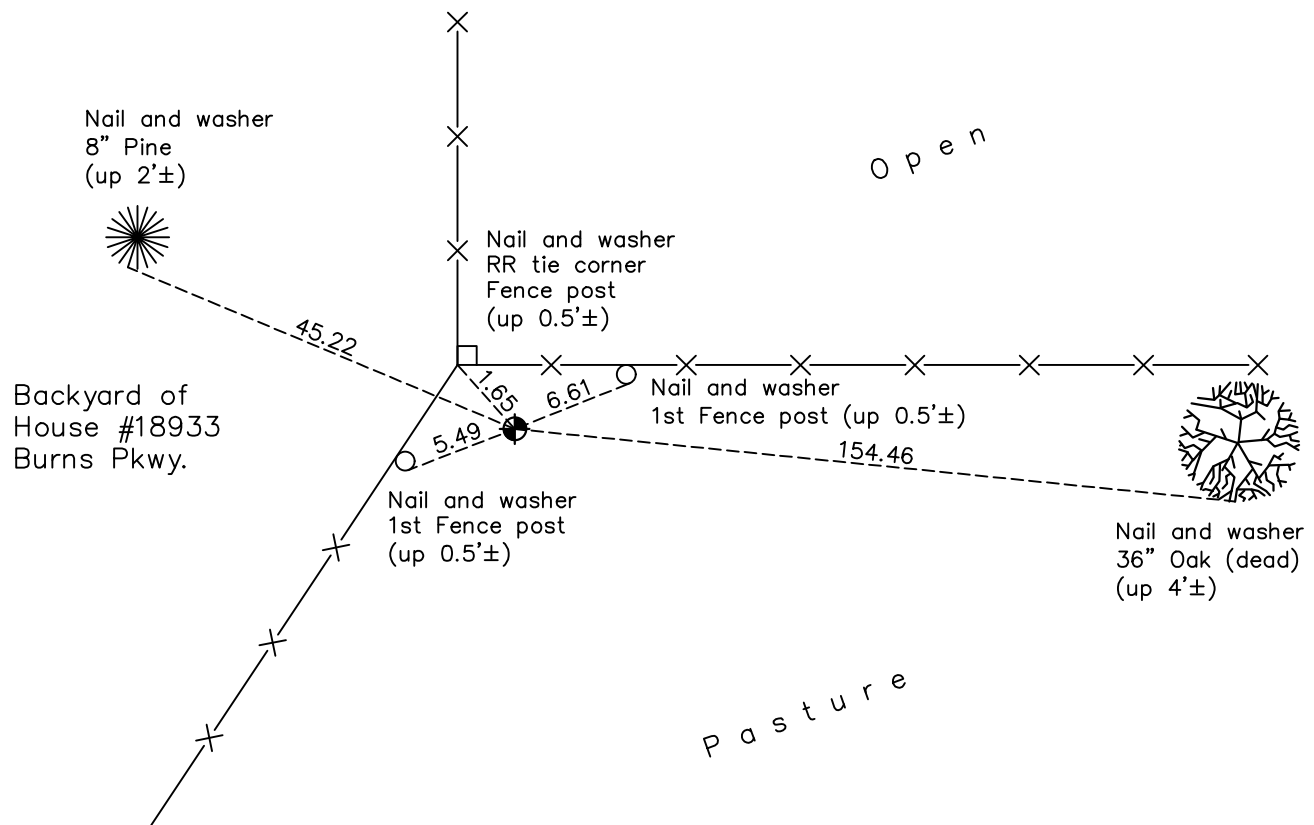
South 1/4 Corner of Sec. 29 Township 33 Range 25

On the 6th day of May, 1974, the described corner was evidenced by area resurvey

and to perpetuate the location of said corner, at the exact location thereof, a permanent marker was placed consisting of a cast iron monument

AND on the 19th day of March, 2018, said permanent marker was found down 0.2'± and the ties were updated

Updated reference ties are as shown below.



Revision Date

4/24/18

N.A.D. 1983 Coordinates
(1996 Adjustment)

County Project Coordinates	
Northing	<u>201600.1974</u>
Easting	<u>445079.9923</u>
Date	<u>2/19/03</u>

I hereby certify that this United States public land survey monument record is correct and complete to the best of my knowledge and belief.

David M. Zieglmeier Date 6/11/21

David M. Zieglmeier, Anoka County Surveyor

Minnesota License Number 46179

HISTORY OF GOVERNMENT CORNER

Page No. 107

County of Anoka

State of Minnesota

South 1/4 Corner of Sec. 29 Township 33 Range 25

CORNER HISTORY:

May 1855 - This corner was established by James M. Marsh, Deputy Surveyor. Marsh marked the position by "set quarter section post" with one bearing tree marked as an accessory.

May 6, 1974 - Set cast iron monument flush using area resurvey. Established ties to monument.

July 23, 1979 - Found cast iron monument and updated ties.

August 10, 1982 - Found cast iron monument and updated ties.

July 12, 1985 - Found cast iron monument and updated ties.

June 16, 1989 - Found cast iron monument and updated ties.

July 11, 1994 - Found cast iron monument and updated ties.

February 19, 2003 - Found cast iron monument and updated ties. Established NAD 1983 (1996 adj.) Anoka County project coordinates by static GPS methods.

November 6, 2013 - Found cast iron monument. Verified position by VRS GPS methods. Updated ties.

March 19, 2018 - Found cast iron monument down 0.2'±. Verified position by VRS GPS methods. Updated ties.