

CERTIFICATE OF LOCATION OF GOVERNMENT CORNER

County of Anoka

State of Minnesota

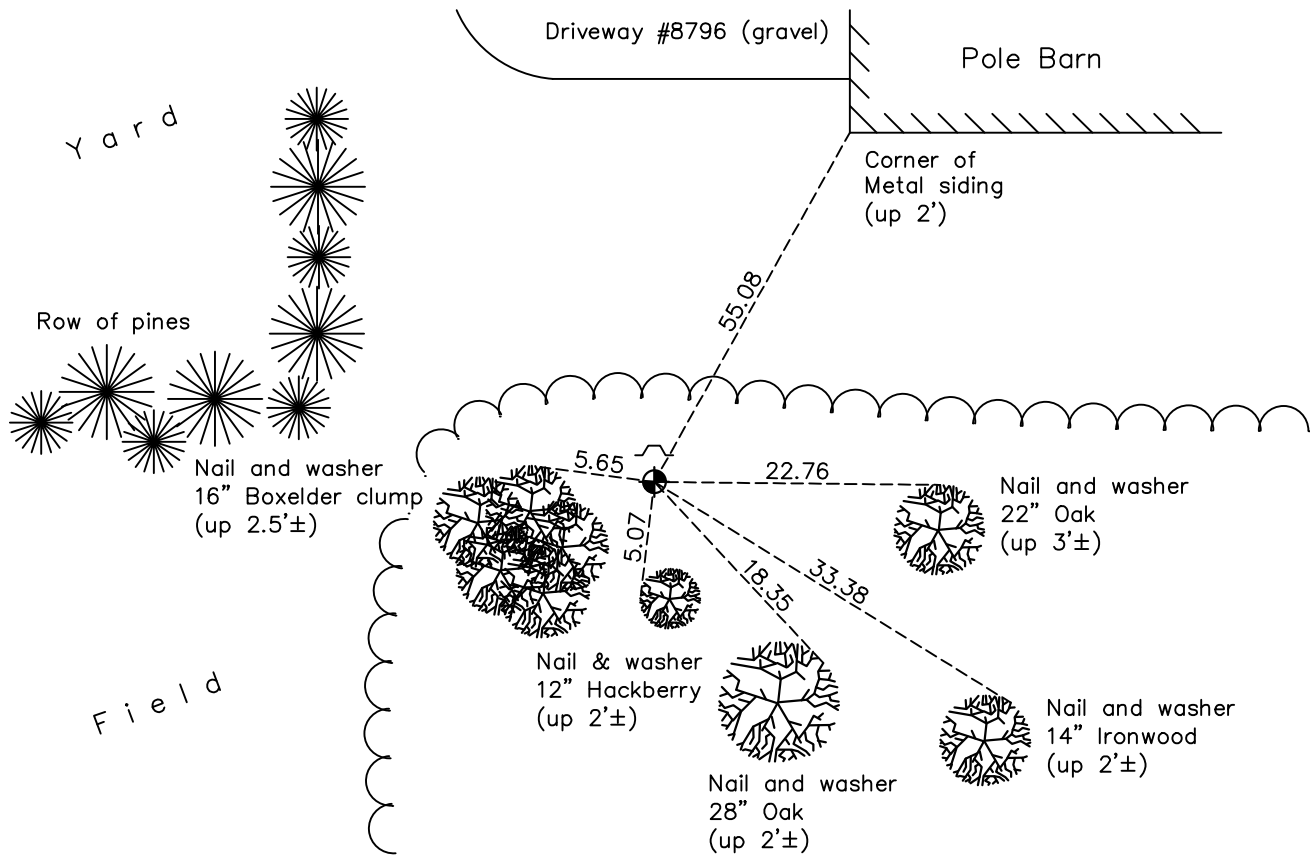
Southeast Corner of Sec. 30 Township 33 Range 25

On the 4th day of October, 1963, the described corner was evidenced by a 3/4" iron pipe

and to perpetuate the location of said corner, at the exact location thereof, a permanent marker was placed consisting of a cast iron monument with a sign and post on the north side

AND on the 19th day of March, 2018, said permanent marker was found down 0.6'± and the ties were updated

Updated reference ties are as shown below.



Revision Date

4/24/18

N.A.D. 1983 Coordinates
(1996 Adjustment)

County Project Coordinates	
Northing	<u>201632.5238</u>
Easting	<u>442477.2994</u>
Date	<u>2/18/03</u>

I hereby certify that this United States public land survey monument record is correct and complete to the best of my knowledge and belief.

David M Ziegmeier Date 6/11/21

David M. Ziegmeier, Anoka County Surveyor

Minnesota License Number 46179

HISTORY OF GOVERNMENT CORNER

Page No. 108

County of Anoka

State of Minnesota

Southeast Corner of Sec. 30 Township 33 Range 25

CORNER HISTORY:

May 1855 - This corner was established by James M. Marsh, Deputy Surveyor. Marsh marked the position by "set post corner of sections 29, 30, 31 and 32" with two bearing trees marked as accessories.

November 9, 1946 - Cartwright set a concrete monument using old fence corner from fences to east and south.

October 4, 1963 - Found Cartwright ties and concrete monument gone. Found 3/4" pinched iron pipe. Area resident stated that iron pipe was set by Cartwright and not a concrete monument. Updated ties to iron pipe.

August 23, 1965 - Found iron pipe and updated ties.

July 10, 1969 - Found iron pipe and updated ties.

August 9, 1973 - Found iron pipe and updated ties.

July 30, 1976 - Found iron pipe and updated ties.

July 23, 1979 - Found iron pipe and updated ties.

August 10, 1982 - Found iron pipe and updated ties.

July 12, 1985 - Found iron pipe and updated ties.

April 7, 1988 - Replaced iron pipe with cast iron monument. Updated ties. Set sign and post on the north side.

July 12, 1994 - Found cast iron monument and updated ties.

February 18, 2003 - Established NAD 1983 (1996 adj.) Anoka County project coordinates by static GPS methods.

November 6, 2013 - Found cast iron monument and updated ties.

March 19, 2018 - Found cast iron monument down 0.6'±. Verified position by VRS GPS methods. Updated ties.