

CERTIFICATE OF LOCATION OF GOVERNMENT CORNER

County of Anoka

State of Minnesota

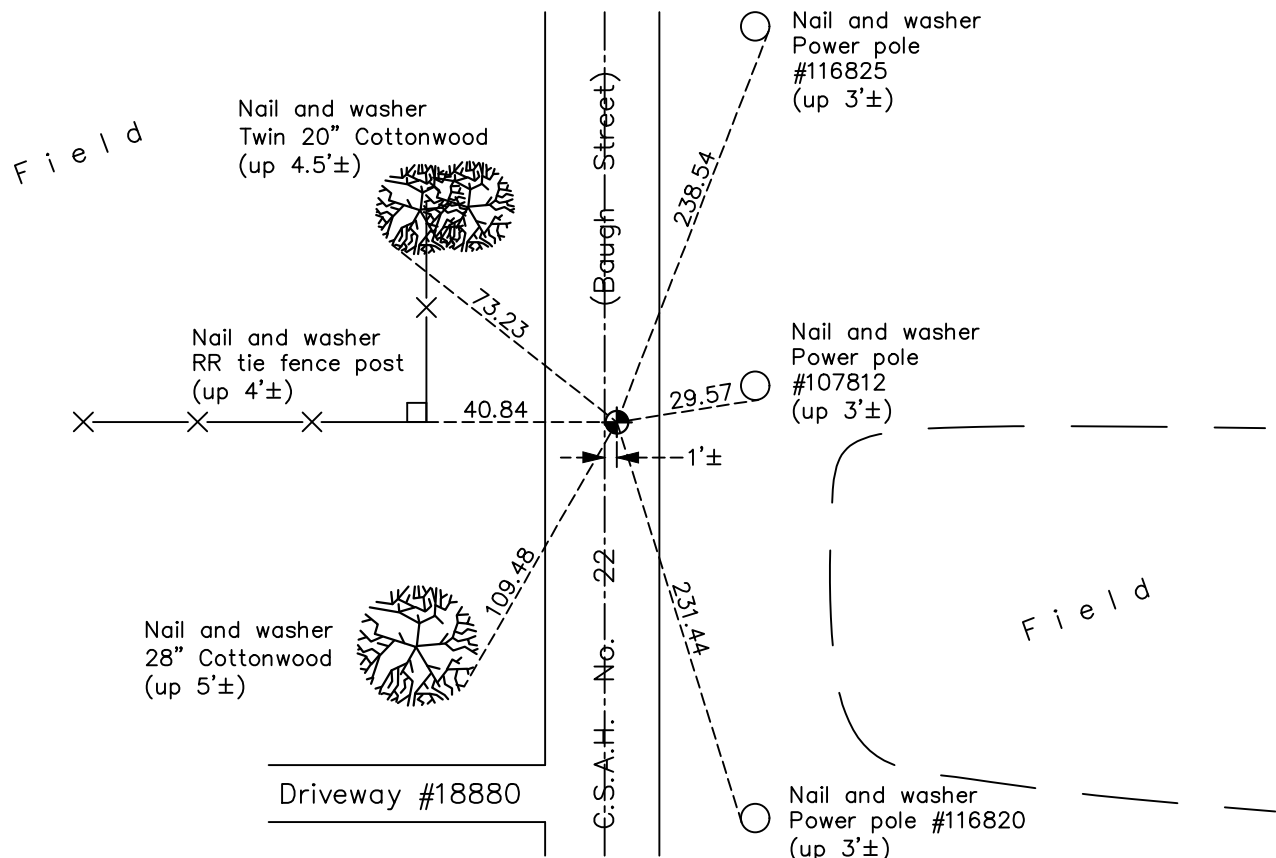
South 1/4 Corner of Sec. 30 Township 33 Range 25

On the 4th day of October, 1963, the described corner was evidenced by a bent axle shaft

and to perpetuate the location of said corner, at the exact location thereof, a permanent marker was placed consisting of a cast iron monument

AND on the 20th day of March, 2018, said permanent marker was found flush and the ties were updated

Updated reference ties are as shown below.



Revision Date

4/24/18

N.A.D. 1983 Coordinates
(1996 Adjustment)

County Project Coordinates	
Northing	<u>201645.8182</u>
Easting	<u>439831.1560</u>
Date	<u>10/01/02</u>

I hereby certify that this United States public land survey monument record is correct and complete to the best of my knowledge and belief.

David M Zieglsmeier Date 6/11/21

David M. Zieglsmeier, Anoka County Surveyor

Minnesota License Number 46179

HISTORY OF GOVERNMENT CORNER

Page No. 109

County of Anoka

State of Minnesota

South 1/4 Corner of Sec. 30 Township 33 Range 25

CORNER HISTORY:

May 1855 - This corner was established by James M. Marsh, Deputy Surveyor. Marsh marked the position by "set quarter section post" with one bearing tree marked as an accessory.

November 9, 1946 - Cartwright set a concrete monument on line and at equal distances from southeast and southwest section corners. Established ties to monument. Monument falls in road running north and south.

October 4, 1963 - Found a bent axle shaft that fits old ties to Cartwright's concrete. Replaced with a 1/2" x 27" iron pipe down 0.5'±. Updated ties to iron pipe.

April 21, 1965 - Found 1/2" iron pipe and set construction ties prior to road construction.

August 5, 1965 - Found 1/2" iron pipe and updated ties.

November 1, 1965 - Set cast iron monument on top of iron pipe and updated ties.

July 2, 1969 - Found cast iron monument and updated ties.

July 28, 1969 - Found solid cast iron monument down 0.7'± and replaced with a removable top cast iron monument flush. Updated ties.

July 24, 1973 - Found cast iron monument and updated ties.

July 30, 1976 - Found cast iron monument and updated ties.

July 12, 1979 - Found cast iron monument and updated ties.

August 12, 1982 - Found cast iron monument and updated ties.

June 26, 1985 - Found cast iron monument and updated ties.

August 30, 1988 - Found cast iron monument and updated ties.

June 29, 1994 - Found cast iron monument and updated ties.

October 1, 2002 - Established NAD 1983 (1996 adj.) Anoka County project coordinates by static GPS methods.

October 7, 2002 - Found cast iron monument and updated ties.

November, 2013 - Found cast iron monument. Verified position by VRS GPS methods. Updated ties.

March 20, 2018 - Found cast iron monument flush. Verified position by VRS GPS methods. Updated ties.