

CERTIFICATE OF LOCATION OF GOVERNMENT CORNER

County of Anoka

State of Minnesota

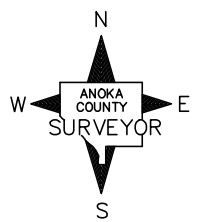
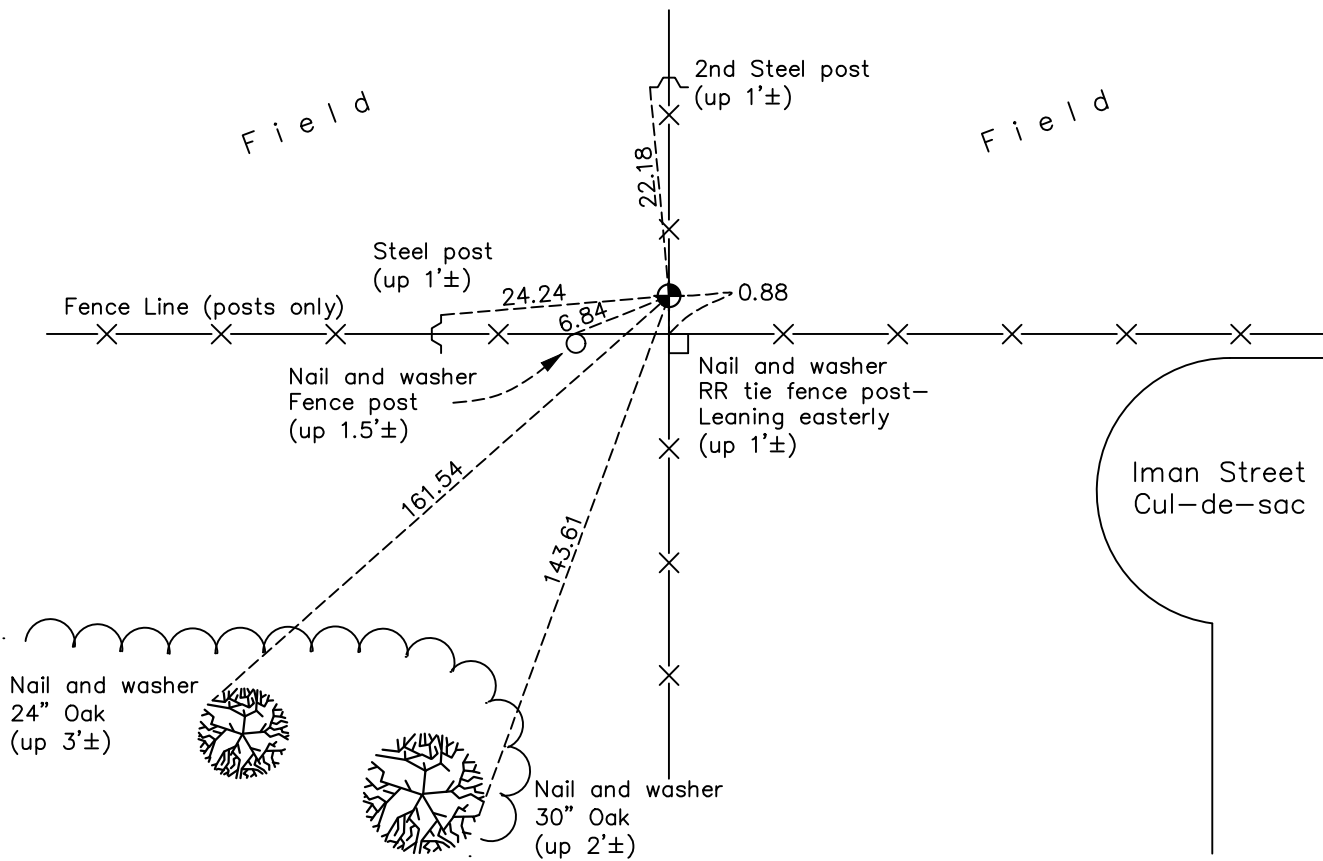
Southwest Corner of Sec. 30 Township 33 Range 25

On the 4th day of October, 1963, the described corner was evidenced by a 6"X6" granite monument

and to perpetuate the location of said corner, at the exact location thereof, a permanent marker was placed consisting of a cast iron monument

AND on the 7th day of March, 2018, said permanent marker was found up 0.1'± and the ties were updated

Updated reference ties are as shown below.



N.A.D. 1983 Coordinates
(1996 Adjustment)

County Project Coordinates	
Northing	201658.9604
Easting	437185.0395
Date	2/20/03

Revision Date
4/24/18

I hereby certify that this United States public land survey monument record is correct and complete to the best of my knowledge and belief.

David M. Zieglmeier Date 6/11/21

David M. Zieglmeier, Anoka County Surveyor

Minnesota License Number 46179

HISTORY OF GOVERNMENT CORNER

Page No. 110

County of Anoka

State of Minnesota

Southwest Corner of Sec. 30 Township 33 Range 25

CORNER HISTORY:

September 1849 - This corner was established by Theodore Conkey, Deputy Surveyor. Conkey marked the position by "set post corner sections 25, 30, 31 and 36" with two bearing trees marked as accessories.

November 8, 1946 - Harvey Cartwright found a granite monument and updated ties.

October 4, 1963 - Found 6" x 6" granite monument up 0.5'± and updated ties.

August 23, 1965 - Found granite monument and updated ties.

July 10, 1969 - Found cast iron monument set by Don Pepper up 0.15'± and updated ties.

August 13, 1973 - Found cast iron monument and updated ties.

July 30, 1976 - Found cast iron monument and updated ties.

July 23, 1979 - Found cast iron monument and updated ties.

August 10, 1982 - Found cast iron monument and updated ties.

July 15, 1985 - Found cast iron monument and updated ties.

May 22, 1989 - Found cast iron monument and updated ties.

July 18, 1994 - Found cast iron monument and updated ties.

February 20, 2003 - Found cast iron monument and updated ties. Established NAD 1983 (1996 adj.) Anoka County project coordinates by static GPS methods.

November 6, 2013 - Found cast iron monument up 0.1'±. Verified position by VRS GPS methods. Updated ties.

March 7, 2018 - Found cast iron monument up 0.1'±. Verified position by VRS GPS methods. Updated ties.