

CERTIFICATE OF LOCATION OF GOVERNMENT CORNER

County of Anoka

State of Minnesota

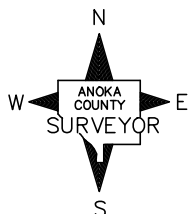
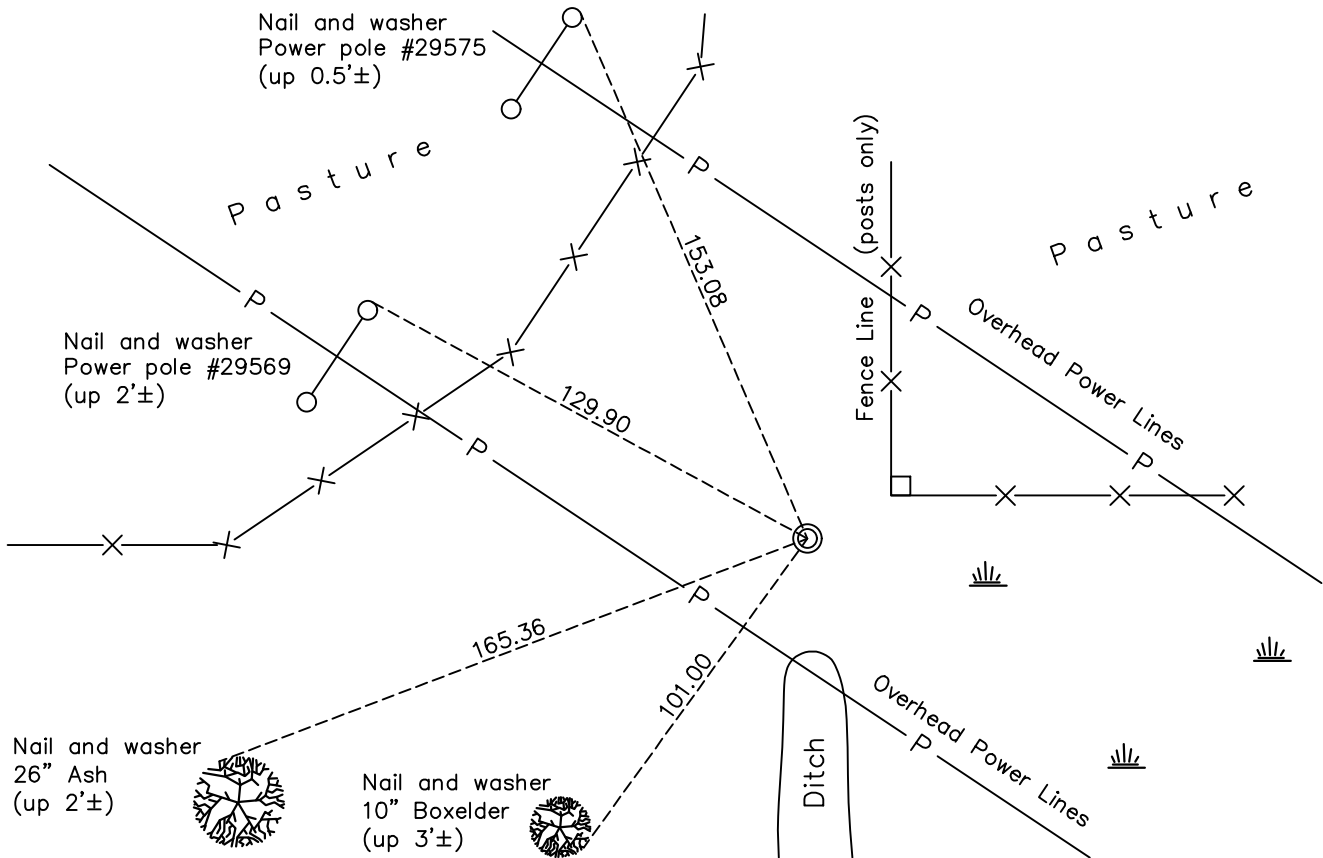
West 1/4 Corner of Sec. 31 Township 33 Range 25

On the 2nd day of July, 1975, the described corner was evidenced by area resurvey

and to perpetuate the location of said corner, at the exact location thereof, a permanent marker was placed consisting of a red and white iron pipe

AND on the 20th day of March, 2018, said permanent marker was found up 4'± and leaning southerly 0.2'± with the paint worn off. The ties were updated

Updated reference ties are as shown below.



Revision Date

4/24/18

N.A.D. 1983 Coordinates
(1996 Adjustment)

County Project Coordinates	
Northing	<u>199009.2231</u>
Easting	<u>437153.9214</u>
Date	<u>2/19/03</u>

I hereby certify that this United States public land survey monument record is correct and complete to the best of my knowledge and belief.

David M Zieglsmeier Date 6/11/21

David M. Zieglsmeier, Anoka County Surveyor

Minnesota License Number 46179

HISTORY OF GOVERNMENT CORNER

Page No. 111

County of Anoka

State of Minnesota

West 1/4 Corner of Sec. 31 Township 33 Range 25

CORNER HISTORY:

September 1849 - This corner was established by Theodore Conkey, Deputy Surveyor. Conkey marked the position by "set post for quarter section corner" with two bearing trees marked as accessories.

July 2, 1975 - Set a red and white iron pipe w/sign using area resurvey. Established ties to monument.

August 2, 1976 - Found red and white iron pipe and updated ties.

July 23, 1979 - Found red and white iron pipe and updated ties.

August 10, 1982 - Found red and white iron pipe and updated ties.

July 15, 1985 - Found red and white iron pipe and updated ties.

June 12, 1989 - Found red and white iron pipe and updated ties.

July 18, 1994 - Found red and white iron pipe and updated ties.

February 19, 2003 - Found red and white iron pipe and updated ties. Established NAD 1983 (1996 adj.) Anoka County project coordinates by static GPS methods.

November 7, 2013 - Found red and white iron pipe up 4'± and leaning southerly 0.2'± with the paint worn off. Verified position by VRS GPS methods. Updated ties.

March 20, 2018 - Found red and white iron pipe up 4'± and leaning southerly 0.2'± with the paint worn off. Verified position by VRS GPS methods. Updated ties.